

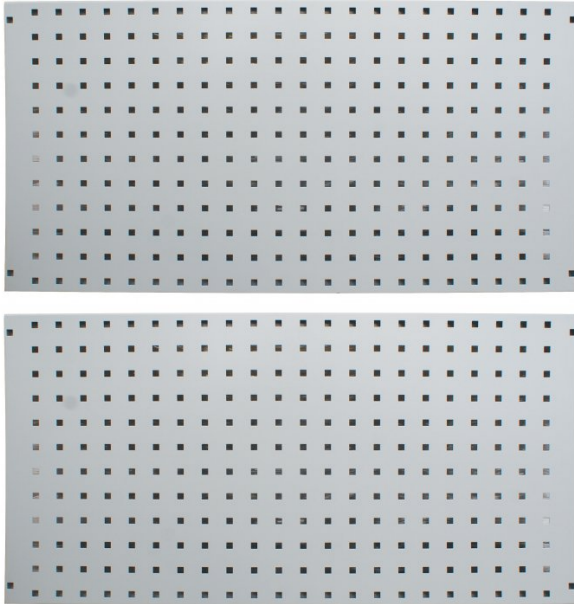
Product Brochure For A412

Industrial Wall Backing Panels - Square Hole Type - SP-900

900 x 456 x 20mm - 2 Piece
Suits Hooks, Holders & Prongs

On Sale

Ex GST	Inc GST
\$98.00	\$112.70
\$69.57	\$80.00



ORDER CODE:	A412
MODEL:	SP-900
Type:	Backing Panel - Square & Wall Mounting
Drawer Load Capacity (kg):	~
Shelf Load Capacity (kg):	~
Total Combined Load Capacity (kg):	~
Parts Bin Load Capacity Each (kg):	~
Buckets / Bins Total Quantity (No.):	~
Buckets / Bins Dividers Quantity (No.):	~
Maximum Total Load Capacity (kg):	~
Buckets / Bins A: Quantity / Size (mm):	~
Buckets / Bins B: Quantity / Size (mm):	~
Buckets / Bins C: Quantity / Size (mm):	~
Buckets / Bins D: Quantity / Size (mm):	~
Dimensions (W x D x H) (mm):	2 x (900 x 456 x 20)
Nett Weight (kg):	14



Description

Square hole type panels for hooks & holders

Panels can quickly and easily be mounted to walls or solid structures
Designed to accommodate hooks & holders to maximise tool storage and handling
Panels can be mounted above workbenches or in other workshop areas to improve productivity & efficiency
Take back more valuable floor & wall space to offer the ultimate storage system

Features

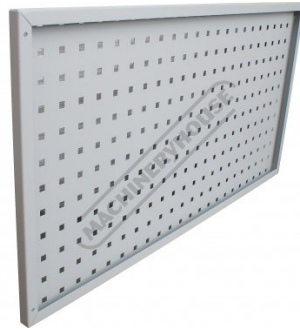
- 2 piece steel backing panel set
- Square holes type panels suit optional hooks & holders
- Dimensions of each panel: 900 x 456 x 20mm
- 20mm mounting frame with 2 bends gives additional strength
- Powder-coated finish stands up to heavy-duty service
- Includes 8 x mounting screws

Product Brochure For A412

Specific Features



Shown with Optional Accessories and Tools



20mm Folded Edge for Additional Strength



Shown with Optional Hook



Includes Mounting Screws

Recommended Accessories

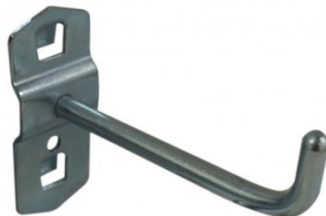
A439

Hook - Single Prong



A440

Hook - Single Prong



A4401

Hook - Single Prong



A441

Hook - Double Prong



A442

Hook - Double Prong



A4492

Hook - U Shape Holder



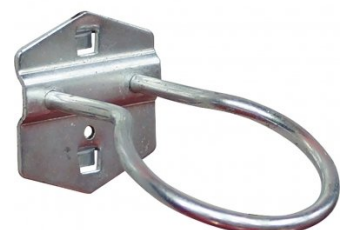
A449

Hook - U Shape Holder



A4496

Round Tool Holder - Loop



Product Brochure For A412

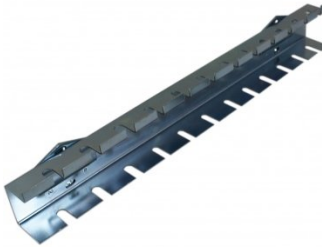
A444
Plier Holder - Triple Prong



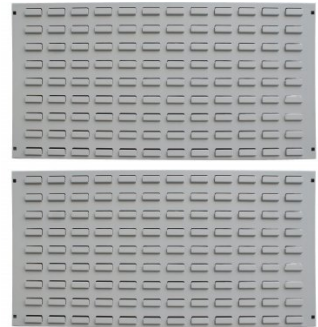
A446
Holder - Spanner



A448
Holder - Screwdriver



A410
Industrial Wall Backing Panels -
Louvre Type



A420
Industrial Work Bench

