

Product Brochure For B075

Swivel Head-Dual Mitre Metal Cutting Band Saw with Conveyor System - EB-330DSC

2 Blade Speed 36 - 72mpm, Dual Mitre Cuts Up To 60°, Quick Action Material Clamp/Includes Hydraulic Down Feed Control & In & Out Feed Conveyor System

On Sale

Ex GST	Inc GST
\$7,748.00	\$8,910.20
\$6,600.00	\$7,590.00



ORDER CODE:	B075
MODEL:	EB-330DSC
Operation Type:	Swivel Head - Dual Mitre
Round @ 90° (mm):	260
Round @ 45° (mm):	240
Round @ 60° (mm):	160
Square @ 90° (mm):	230
Square @ 45° (mm):	210
Square @ 60° (mm):	130
Rectangle (W x H) @ 90° (mm):	295 x 230
Rectangle (W x H) @ 45° (mm):	225 x 210
Rectangle (W x H) @ 60° (mm):	160 x 130
Coolant System:	Yes
Table Working Height (mm):	950
Cutting Head Beam Type:	Manual
Cutting Head Beam Return:	Manual Return
Cutting Head Down Feed Control:	Adjustable Hydraulic
Vice Clamping Fixture:	Manual - Quick Action
Bundle Cutting Fixture:	~
Blade Steps / Speeds (M/Min):	36, 72
Blade Size (L x W x T) (mm):	2965 x 27 x 0.9
Motor Power (kW / hp):	1.2 / 1.6
Voltage / Amperage (V / amp):	415
Nett Weight (kg):	404



Features

- 295 x 230mm rectangular capacity
- Control panel with "Auto", "Manual" & "Set-Up" modes
- Unique rotating table swivels with the cutting head on ball bearings
- Swivel head double mitre cut to 45° right & left, 60° right
- Quick action lock/release lever for swivel head
- Swivel head incorporates rotating
- Quick action vice release to change opening & closing position
- Quick-action clamping lever for repetition work
- Unique sliding vice design for dual mitre operation
- User friendly blade tension system with gauge
- Larger cutting capacity than conventional cold saws
- Adjustable length stop for repetition cutting
- Heavy-duty gear drive system
- 2 x blade speeds 36 - 72mpm
- Ball bearing blade guides ensures minimal blade clearance wear and increases blade life due to less friction
- Coolant system for cutting efficiency and blade life
- Adjustable hydraulic cylinder for auto feed
- Vibration free, low noise operation ensures clean & high precision cuts
- Machine stand with integrated cooling fitted as standard
- Made in Taiwan

Includes

- In & out feed roller conveyor system with stands
- Material length stop on ball bearing slide with flip over design

Product Brochure For B075

Specific Features



90 Degrees Cut



Swivel Head, 45 Degrees Left Cut



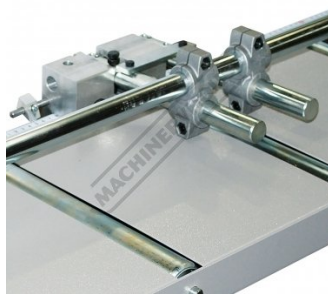
Swivel Head, 60 Degrees Right Cut



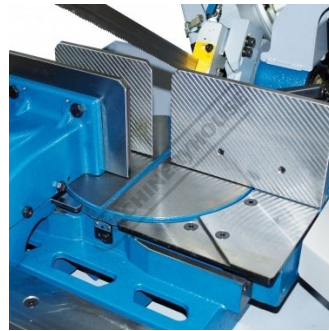
Control Panel



Out Feed Roller Table with Length Stop



Length Stop on Ball Bearing Slide with Flip Up Action



Dual Mitre Rotating Table on Ball Bearings



Quick Action Material Clamp Lever



Quick Action Lever For Material Setup



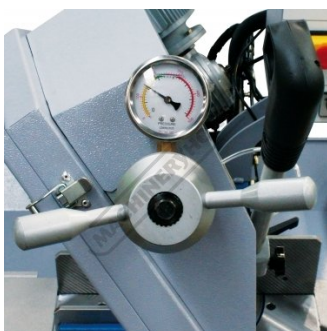
Quick Release Sliding Vice



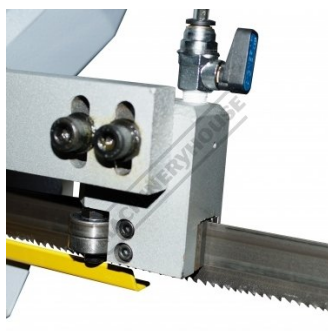
Trigger Control



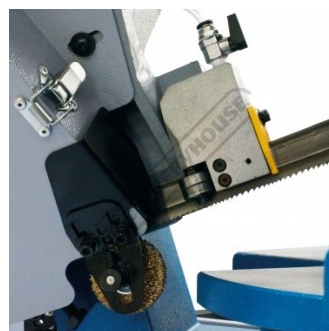
Adjustable Hydraulic Blade Feed Dial



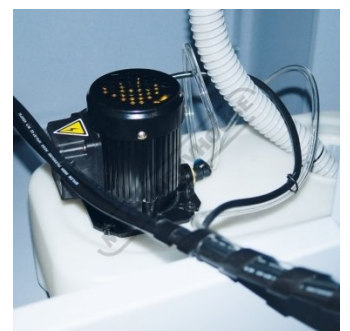
Blade Tension Device with Gauge



Ball Bearing and Carbide Blade Guides



Blade Cleaning Brush

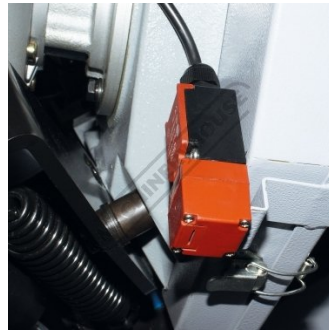


Coolant System

Product Brochure For B075



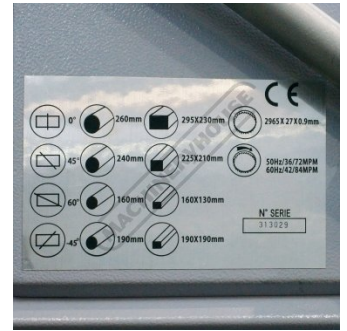
Motor and Gearbox



Blade Guard Micro



Blade Cut Out Switch



Cutting Capacity Chart

Recommended Accessories

B534

Metal Band Saw Blade - 4-6TPI
Bi-Metal, Blade - 2965 x 27 x 0.9mm

B535

Metal Band Saw Blade - 6-10TPI Bi-Metal, Blade - 2965 x 27 x 0.9mm

B536

Metal Band Saw Blade - 10-14TPI Bi-Metal, Blade - 2965 x 27 x 0.9mm

S091

Soluble Metal Cutting Fluid - 20 Litre



S090A

Soluble Metal Cutting Fluid - 1 Litre

S090

Soluble Metal Cutting Fluid - 5 Litre

S076

Cutting Tool Lubricant Fluid - 500ml

S077

Drilling, Tapping & Cutting Tool Lubricant Spray - 400g



Product Brochure For B075

S074
Cutting Tool Lubricant Paste -
500g



L300
Magnetic Swarf Remover



M9991
Magnetic Floor Sweeper



L812
Roller Conveyor



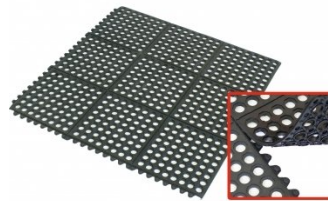
L814
Roller Conveyor Stand



M800
Rubber Mat - Anti-Fatigue



M805
Rubber Mat - Anti-Fatigue



O043
Rust & Corrosion Preventive



O042
General Purpose Lubricant &
Corrosion Inhibitor



O044
Rust & Corrosion Preventive

