

Product Brochure For B8075

Hydraulic Pipe & Tube Rotary Draw Bender - RDB-125

Ø1/2" - Ø2" NB Pipe Capacity, Ø6.35 - Ø63.5mm Round Tube Capacity

On Sale - Limited Stock

Ex GST

Inc GST

\$17,386.00

\$19,993.90

\$12,000.00

\$13,800.00



ORDER CODE:	B8075
MODEL:	RDB-125
Material (Type):	Pipe & Tube
Material Section (Type):	Round, Square & Rod
Machine (Type):	Electric Hydraulic - Rotary Draw
Hydraulic Jack Size (Tonne):	~
Round Pipe Range (NB) - Mild Steel (inch / mm):	Ø1/2" - Ø2"
Round Tube Range (OD) - Mild Steel (inch / mm):	Ø6.35 - Ø63.5
Square Tube Range (inch / mm):	19.05 - 50.8
Tube Wall Thickness - Mild Steel (inch / mm):	~
Round Pipe (NB) x Wall Capacity - Mild Steel (inch):	Ø2" (Schedule 40)
Round Pipe (NB) x Wall Capacity - Aluminium (inch / mm):	Ø2" (Schedule 40)
Round Pipe (NB) x Wall Capacity - Stainless Steel (inch / mm):	Ø1-1/2" (Schedule 40)
Round Tube (OD) x Wall Capacity - Mild Steel (inch / mm):	Ø63.5 x 3.17
Round Tube (OD) x Wall Capacity - Aluminium (inch / mm):	Ø63.5 x 3.96
Round Tube (OD) x Wall Capacity - Copper, Brass (inch / mm):	~
Round Tube (OD) x Wall Capacity - Stainless Steel (inch / mm):	Ø60.32 x 3.17
Round Tube (OD) x Wall Capacity - Chromoly (inch / mm):	Ø50.8 x 3.17
Solid Rod - Mild Steel (inch / mm):	Ø31.75
Square Tube x Wall Capacity - Mild Steel (inch / mm):	50.8 x 3.17
Rectangle Tube x Wall Capacity - Mild Steel (inch / mm):	~
Bend Speed - Maximum (Deg / Sec):	~
Bend Direction:	~
Centre Line Radius - Maximum (CLR) (inch / mm):	10 1/2" / 266.7mm
Centre Line Radius - Minimum (CLR) (inch / mm):	1/2" / 12.7mm
Tube Formers Included (inch / mm):	~
Pipe Formers Included (inch / mm):	~
Spigot Size on Ram (inch / mm):	~
Angle Capacity (deg):	200°
Hydraulic Pressure - Maximum (psi):	~
Motor Power (kW / hp):	~
Voltage / Amperage (V / amp):	240
Nett Weight (kg):	160

Description

NOTE: Image shown with Optional Tooling.

Tired of your exhausting manual bender? This hydraulic rotary draw bender will increase your productivity.

Use this draw bender machine for: Economical one-off bending of hand railing and automobile chassis.

Why choose the RDB-125 over comparable machines?

Low-pressure industrial-grade hydraulics make bending quick, quiet, and safe, even at full capacity.

Product Brochure For B8075

Quick-release counter die positioner makes loading and unloading material more time-efficient. Accepts user-friendly drop-on tool sets from Baileigh to increase the options for your applications.

Features

- Requires only 240-volt, single-phase power for easy plug-in almost anywhere
- Handles a maximum capacity of Ø63.5mm OD tubing, Ø50.8mm OD Chromoly, 50.8mm square tubing, and Ø2" NB (5/32", schedule 40) pipe
- Maximum centre line of 8" (203.2mm), depending on material's OD
- Bends up to 200°, allowing for true 180° bends without having to re-pin the die set
- Takes only 4 complete pushes to reach 180°
- Built-in anti-spring back mechanism lets hydraulic cylinder retract without losing its place in the bend

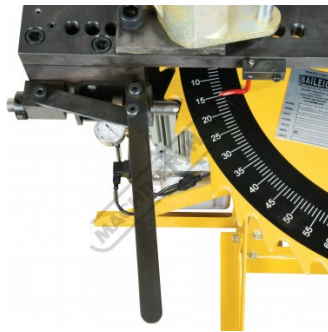
Includes

- Foot pedal control with forward & reverse

Specific Features



Rear View



Degree Bending Scale



Degree Scale Top View



Hydraulic Bending Ram



Anti Spring-Back Mechanism



Bending Arm



Motor & Hydraulic Unit



Hydraulic Pressure Gauge



Power Switch



Foot Control Emergency Stop



Emergency Stop Button

Product Brochure For B8075

Recommended Accessories

B8119

Pipe/Tube Bending Lube -
475ml



B8122

1/2" NB x 180° Round Pipe Die
Set



B8131

3/4" NB x 180° Round Pipe Die
Set



B8141

1" NB x 180° Round Pipe Die
Set



B8152

1-1/4" NB x 180° Round Pipe
Die Set



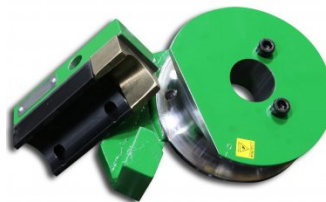
B8166

1-1/2" NB x 180° Round Pipe
Die Set



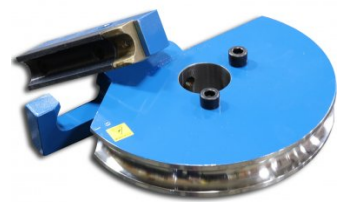
B8175

2" NB x 180° Round Pipe Die
Set



B8253

25.4mm OD x 180° Round Tube
Die Set



Product Brochure For B8075

B8271

31.75mm OD x 180° Round
Tube Die Set

B8287

38.1mm OD x 180° Round Tube
Die Set

B8305

44.45mm OD x 180° Round
Tube Die Set

B8312

50.8mm OD x 180° Round Tube
Die Set



M977

Digital Bevel Box

