

Product Brochure For B8105

Hydraulic Pipe & Tube Rotary Draw Bender - RDB-500

Ø1/2" - Ø3" NB Pipe Capacity, Ø6.35 - Ø76.2mm Round Tube Capacity

On Sale

Ex GST

Inc GST

\$58,500.00

\$67,275.00

\$58,000.00

\$66,700.00



ORDER CODE:	B8105
MODEL:	RDB-500
Material (Type):	Pipe & Tube
Material Section (Type):	Round, Square & Rod
Machine (Type):	Electric Hydraulic - Rotary Draw
Hydraulic Jack Size (Tonne):	~
Round Pipe Range (NB) - Mild Steel (inch / mm):	Ø1/2" - v3"
Round Tube Range (OD) - Mild Steel (inch / mm):	Ø6.35 - Ø76.2
Square Tube Range (inch / mm):	19.05 - 50.8
Tube Wall Thickness - Mild Steel (inch / mm):	~
Round Pipe (NB) x Wall Capacity - Mild Steel (inch):	Ø3" (Schedule 40)
Round Pipe (NB) x Wall Capacity - Aluminium (inch / mm):	Ø3-1/2" (Schedule 40)
Round Pipe (NB) x Wall Capacity - Stainless Steel (inch / mm):	Ø2-1/2" (Schedule 40)
Round Tube (OD) x Wall Capacity - Mild Steel (inch / mm):	Ø76.2 x 6.5
Round Tube (OD) x Wall Capacity - Aluminium (inch / mm):	Ø88.9 x 6.6
Round Tube (OD) x Wall Capacity - Copper, Brass (inch / mm):	~
Round Tube (OD) x Wall Capacity - Stainless Steel (inch / mm):	Ø73 x 5
Round Tube (OD) x Wall Capacity - Chromoly (inch / mm):	Ø88.9 x 5
Solid Rod - Mild Steel (inch / mm):	5Ø0.8
Square Tube x Wall Capacity - Mild Steel (inch / mm):	76 x 6.5
Rectangle Tube x Wall Capacity - Mild Steel (inch / mm):	~
Bend Speed - Maximum (Deg / Sec):	180° / 36
Bend Direction:	~
Centre Line Radius - Maximum (CLR) (inch / mm):	20" / 508mm
Centre Line Radius - Minimum (CLR) (inch / mm):	1/2" / 12.7mm
Tube Formers Included (inch / mm):	~
Pipe Formers Included (inch / mm):	~
Spigot Size on Ram (inch / mm):	~
Angle Capacity (deg):	206°
Hydraulic Pressure - Maximum (psi):	~
Motor Power (kW / hp):	~
Voltage / Amperage (V / amp):	415
Nett Weight (kg):	879

Description

NOTE: Image shown with Optional Tooling.

If you need to bend big pipe—and we mean really big pipe — then this is the industrial hydraulic rotary draw bender for you.

Use this machine for: Military production, oil rigs, gas station bumpers, and other applications involving large-radius pipe.

Features

- Why choose the RDB-500 over similar machines?
- This pipe bender is made in the USA to the highest quality standards.

Product Brochure For B8105

- You can take on profitable military and industrial bending projects and know that your bender is up to the job.
- Includes accuracy-enhancing auto-stop, a feature that some companies consider an upgrade.
- Fast cycle time makes your shop more efficient.
- Easily accommodates 5,000+ drop-on tooling options. And if you don't see the tooling you need, we can customize it for you.
- Industrial-grade, low-pressure hydraulic system runs on 415 Volt 3-phase power
- Handles a maximum capacity of 3" NB (7/32", schedule 40) pipe, 76.2mm square, and 88.9mm round tube (4.77mm wall mild steel)
- Maximum centre line radius of 20" (508mm), depending on wall thickness and material
- Bends pipe up to 206° in a single shot, without stopping or ratcheting
- Foot pedal allows you to control the bender at a variable speed
- Digital auto-stop lets you specify the desired bend degree for ease and accuracy
- Solid steel framework, weighing 816.5kg, ensures durability and accuracy

Includes

- Foot pedal control

Specific Features



Digital Auto Stop



Switch



Industrial Grade Low Pressure Hydraulic System



Fork Pockets



Hydraulic System



Foot Control Emergency Stop

Product Brochure For B8105

Recommended Accessories

B8119

Pipe/Tube Bending Lube -
475ml



B8122

1/2" NB x 180° Round Pipe Die
Set



B8131

3/4" NB x 180° Round Pipe Die
Set



B8141

1" NB x 180° Round Pipe Die
Set



B8152

1-1/4" NB x 180° Round Pipe
Die Set



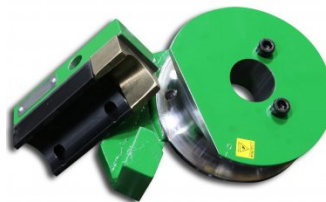
B8166

1-1/2" NB x 180° Round Pipe
Die Set



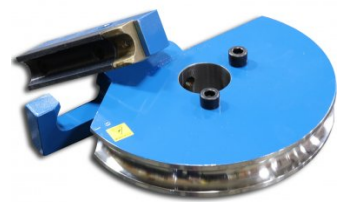
B8175

2" NB x 180° Round Pipe Die
Set



B8253

25.4mm OD x 180° Round Tube
Die Set



Product Brochure For B8105

B8271

31.75mm OD x 180° Round
Tube Die Set

B8287

38.1mm OD x 180° Round Tube
Die Set

B8305

44.45mm OD x 180° Round
Tube Die Set

B8312

50.8mm OD x 180° Round Tube
Die Set



M977

Digital Bevel Box

