

Product Brochure For C105

Collet Chuck - 3MT x ER32 - 3MT x ER32

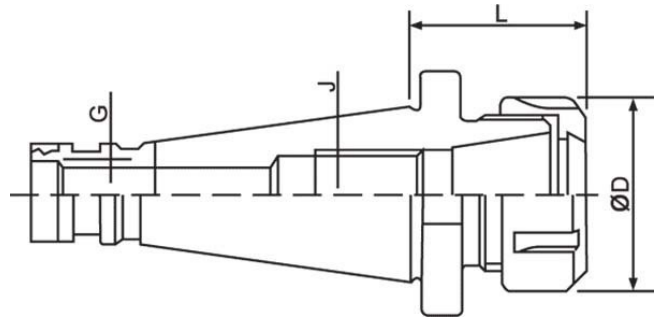
Ø2-Ø20mm

**On Sale**

Ex GST	Inc GST
<b>\$110.00</b>	<b>\$126.50</b>
<b>\$87.83</b>	<b>\$101.00</b>



ORDER CODE:	C105
Collet Type:	ER32
Maximum Capacity (mm):	20
Taper (J):	3MT
Draw Bar (G):	1/2" Whitworth
L (mm):	50
ØD (mm):	50
Nett Weight (kg):	0.6



**Description**

All ER collet chucks meet the specifications of machine tool builders (DIN 2080 taper Shank Grade AT-3 - 85% taper contact) Maintain a high level of accuracy.

**Features**

- Precision Ground
- Rated to 10,000rpm

Product Brochure For C105

**Recommended Accessories**

C932  
ER32 Collet Chuck Wrench



C117  
Collet Nut ER32



C903  
ER32 Collet



C921  
ER32 Collet Set - 6 Piece



C922  
ER32 Collet Set - 18 Piece



C922B  
Collet & Chuck Set - 8 Piece



C926  
Collet & Chuck Set - 20 Piece

