

Product Brochure For C1054

Collet Chuck - 3MT x ER40 - 3MT x ER40

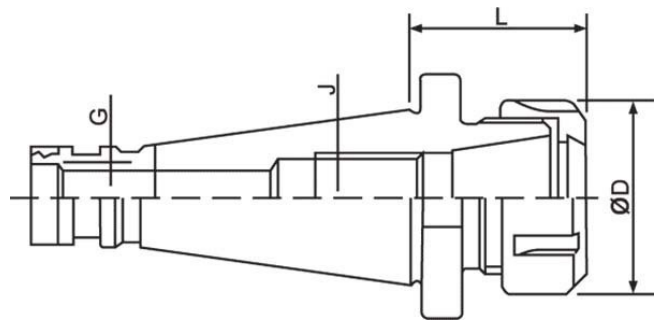
Ø3-Ø26mm

On Sale

Ex GST	Inc GST
\$110.00	\$126.50
\$87.83	\$101.00



ORDER CODE:	C1054
Collet Type:	ER40
Maximum Capacity (mm):	26
Taper (J):	3MT
Draw Bar (G):	1/2" Whitworth
L (mm):	70
ØD (mm):	63
Nett Weight (kg):	1.3



Description

All ER collet chucks meet the specifications of machine tool builders (DIN 2080 taper Shank Grade AT-3 - 85% taper contact) Maintain a high level of accuracy.

Features

- Precision Ground
- Rated to 10,000rpm

Product Brochure For C1054

Specific Features



Top View



Shown Apart



Side View

Recommended Accessories

C969
ER40 Collet Chuck Wrench

C118
Collet Nut - ER40 Ball Bearing
Nut

C957
ER40 Collet Set - 7 Piece

C958
ER40 Collet Set - 23 Piece



C960
Collet & Chuck Set - 9 Piece

C964
Collet & Chuck Set - 25 Piece

C940
ER40 Collet

