

Product Brochure For C112

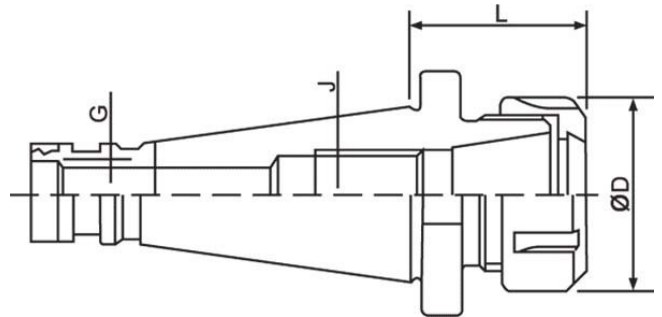
Collet Chuck NT40 - ER32 - NT40 x ER32

Ø2-Ø20mm

**On Sale**

| Ex GST          | Inc GST         |
|-----------------|-----------------|
| <b>\$172.00</b> | <b>\$197.80</b> |
| <b>\$136.52</b> | <b>\$157.00</b> |

|                        |           |
|------------------------|-----------|
| ORDER CODE:            | C112      |
| Collet Type:           | ER32      |
| Maximum Capacity (mm): | 20        |
| Taper (J):             | NT40      |
| Draw Bar (G):          | M16 x 2.0 |
| L (mm):                | 50        |
| ØD (mm):               | 50        |
| Nett Weight (kg):      | 1.0       |



**Description**

All ER collet chucks meet the specifications of machine tool builders (DIN 2080 taper Shank Grade AT-3 - 85% taper contact) Maintain a high level of accuracy.

**Features**

- Precision Ground
- Rated to 10,000rpm

Product Brochure For C112

**Recommended Accessories**

C932  
ER32 Collet Chuck Wrench



C117  
Collet Nut ER32



C921  
ER32 Collet Set - 6 Piece



C922  
ER32 Collet Set - 18 Piece



C925  
Collet & Chuck Set - 8 Piece



C929  
Collet & Chuck Set - 20 Piece



C903  
ER32 Collet

