

Product Brochure For C208

3 Jaw Self Centring Lathe Chuck - K11 SERIES

Ø320mm
Back Plate Mount

On Sale

Ex GST	Inc GST
\$794.00	\$913.10
\$634.78	\$730.00



ORDER CODE:	C208
Mounting Type:	Back Plate Mount
Chuck Size (mm):	Ø320
Outside Jaw (mm):	11.5 - 165
Inside Jaw (mm):	110 - 340
Speed (rpm):	1200
D1 (mm):	270
D2 (mm):	290
D3 (bore) (mm):	100
H (mm):	142
H1 (mm):	95
H2 (mm):	~
h (lowercase) (mm):	11
z-d (mm):	3 x M16
Nett Weight (kg):	47.5



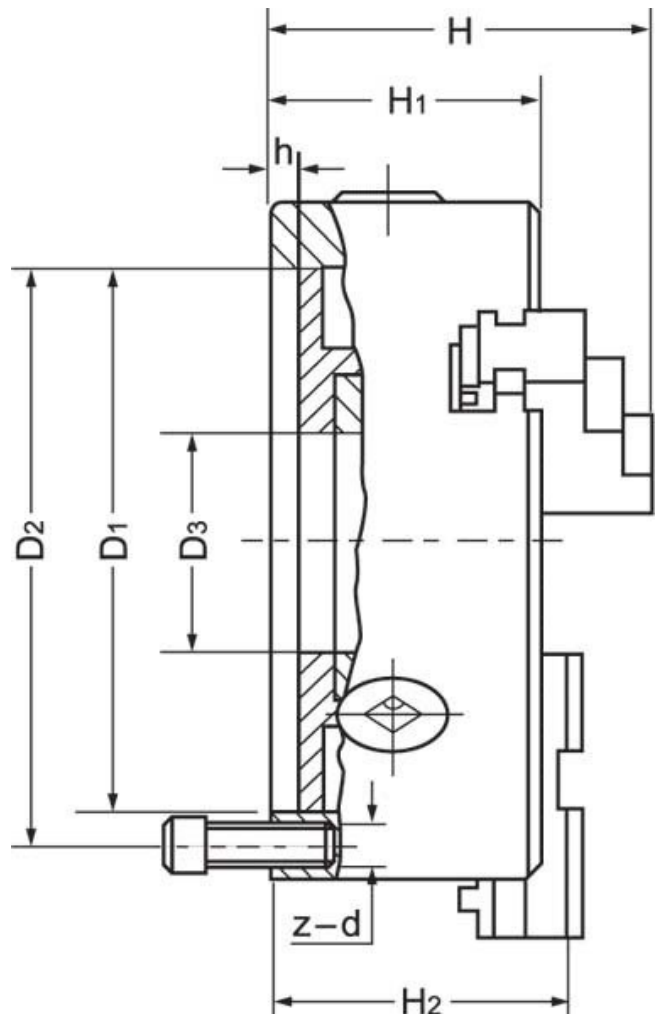
Description

K11 Series cast iron body lathe chucks are built to GB/T 4346.2-2002 standard, and supplied with one piece standard and reverse jaws.

World-class and industry leader in manufacturing manual lathe chucks for over 30 years. ToolMaster precision tolerance lathe chucks are ISO 9001-2000 approved, and ensure high quality with accuracy testing on every chuck.

Includes

- Outside jaws
- Inside jaws
- Mounting screws
- Chuck key



Product Brochure For C208

Specific Features



Rear View



Parts



Front View

Recommended Accessories

L289
D1-6 Camlock Back Plate

L286
D1-8 Camlock Back Plate

C2866
Chuck Key

M055
Magnetic Base and Dial Indicator



A358
Sky Hook Lifting Device

A358A
Chuck Hook

A358C
Bolt Down Adaptor

