

Product Brochure For C232

4 Jaw Independent Lathe Chuck - K72-125

Ø125mm

Back Plate Mount

On Sale

Ex GST

Inc GST

~~\$142.00~~

~~\$163.30~~

\$113.04

\$130.00



ORDER CODE:	C232
Chuck Size:	Ø125
External Jaw Range (mm):	48 - 125
Internal Jaw Range (mm):	7 - 57
Speed (rpm):	3000
D1 (mm):	95
D2 (mm):	108
D3 (mm):	30
H1 (mm):	56
h (mm):	4.5
z-d (mm):	4 - M8
Nett Weight (kg):	5.1

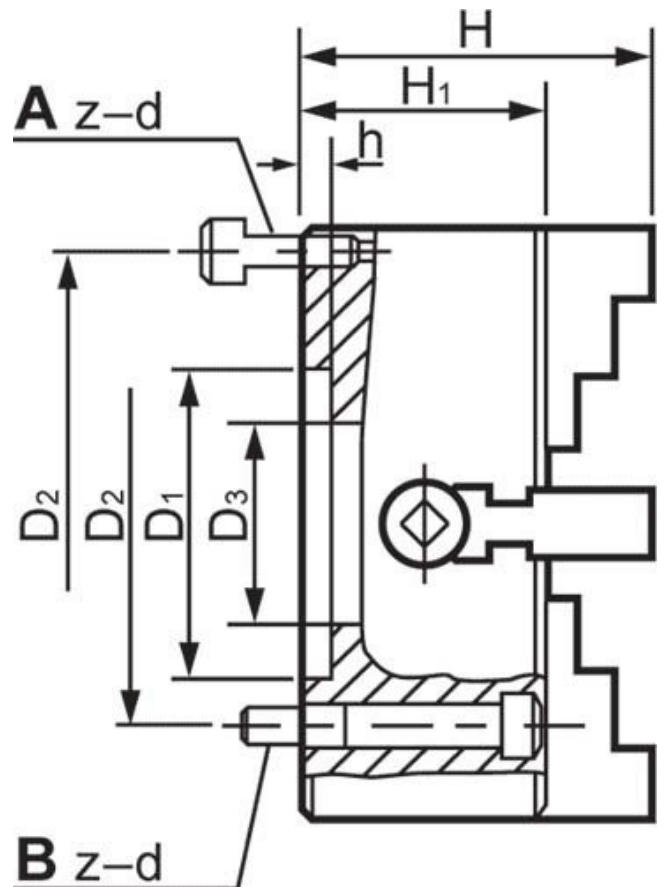


Description

Manufactured from High Strength semi steel and precision machined
Jaws are case-hardened to minimise wear
Operating screws are made from alloy steel and case-hardened

Features

- Rear Mounting



Product Brochure For C232

Specific Features



Back Plate Mount



Included Accessories



Front View

Recommended Accessories

L287
D1-4 Camlock Back Plate



L2875
D1-5 Camlock Back Plate



L289
D1-6 Camlock Back Plate



L286
D1-8 Camlock Back Plate



L2884
D1-11 Camlock Back Plate

