

Product Brochure For C250

## 4 Jaw Independent Lathe Chuck - K72-160

Ø160mm

Back Plate Mount

**On Sale**

Ex GST

Inc GST

**\$196.00**

**\$225.40**

**\$155.65**

**\$179.00**



ORDER CODE:	C250
Chuck Size:	Ø160
External Jaw Range (mm):	50 - 160
Internal Jaw Range (mm):	8 - 80
Speed (rpm):	2500
D1 (mm):	65
D2 (mm):	95
D3 (mm):	55
H1 (mm):	65
h (mm):	5
z-d (mm):	4 - M10
Nett Weight (kg):	9.2

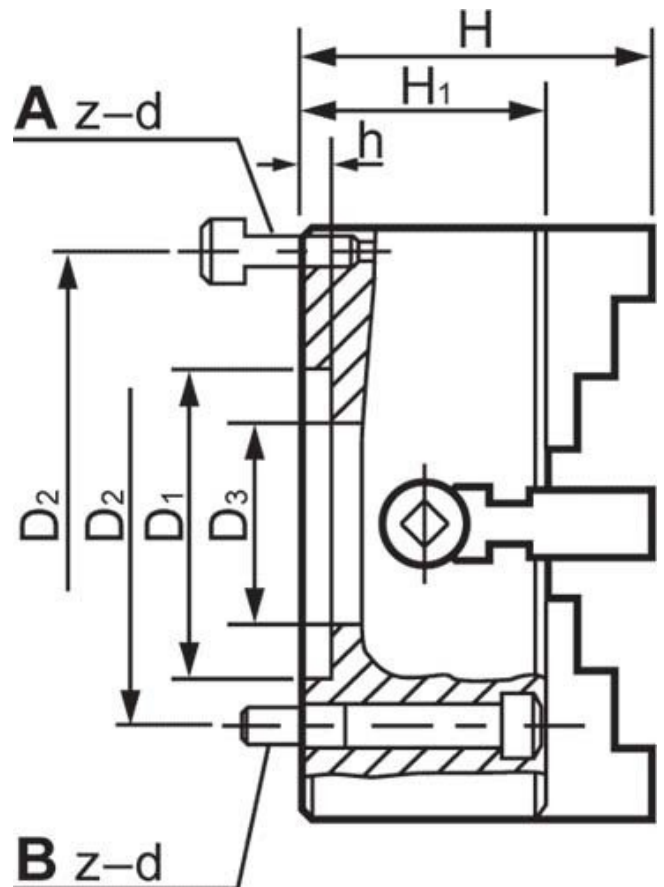


### Description

Manufactured from High Strength semi steel and precision machined Jaws are case-hardened to minimise wear  
Operating screws are made from alloy steel and case-hardened

### Features

- Front Mounting



Product Brochure For C250

---

**Specific Features**



Back Plate Mount



Included Accessories



Front View

**Recommended Accessories**

L287

D1-4 Camlock Back Plate

L2875

D1-5 Camlock Back Plate

L289

D1-6 Camlock Back Plate

L286

D1-8 Camlock Back Plate



L2884

D1-11 Camlock Back Plate

