

Product Brochure For C255

4 Jaw Independent Lathe Chuck - K72-250

Ø250mm

Back Plate Mount

On Sale

Ex GST

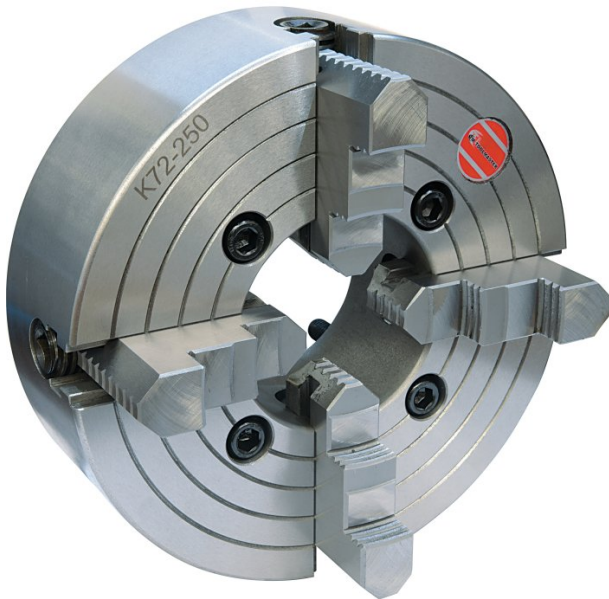
Inc GST

~~\$354.00~~

~~\$407.10~~

\$282.61

\$325.00



ORDER CODE:	C255
Chuck Size:	Ø250
External Jaw Range (mm):	160 - 250
Internal Jaw Range (mm):	5 - 118
Speed (rpm):	1600
D1 (mm):	110
D2 (mm):	130
D3 (mm):	100
H1 (mm):	80
h (mm):	6
z-d (mm):	4 - M12
Nett Weight (kg):	23



Description

Manufactured from High Strength semi steel and precision machined
Jaws are case-hardened to minimise wear
Operating screws are made from alloy steel and case-hardened

Features

- Front Mounting

Product Brochure For C255

Specific Features



Front View



Back Plate Mount



Included Accessory

Recommended Accessories

L287

D1-4 Camlock Back Plate



L2875

D1-5 Camlock Back Plate



L289

D1-6 Camlock Back Plate



L286

D1-8 Camlock Back Plate



L2884

D1-11 Camlock Back Plate



A358

Sky Hook Lifting Device



A358A

Chuck Hook



A358C

Bolt Down Adaptor

