

Product Brochure For C256A

4 Jaw Independent Lathe Chuck - K72-320/D1-8

Ø320mm

D1-8 Camlock Mount

On Sale

Ex GST

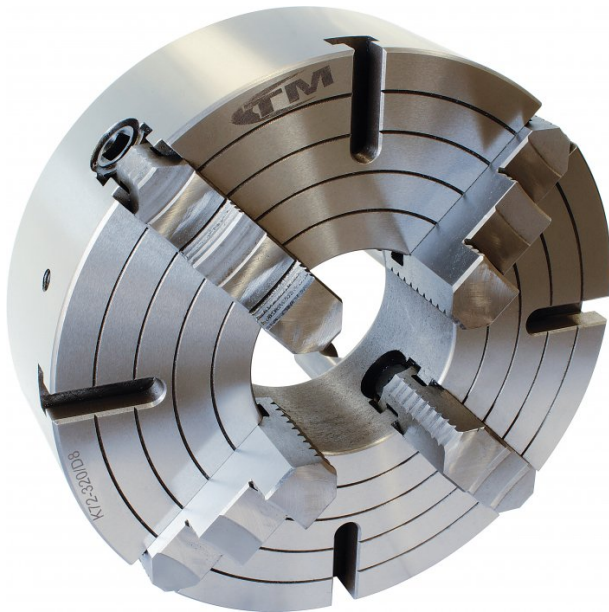
\$720.00

\$576.52

Inc GST

\$828.00

\$663.00

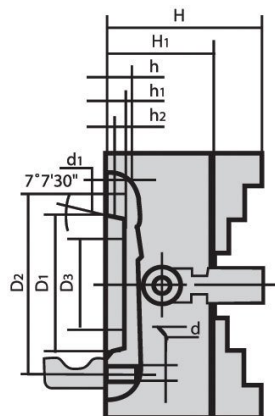


ORDER CODE:	C256A
Chuck Size (mm):	Ø320
Camlock:	D1-8
Speed (rpm):	1200
D1 (mm):	139.7
D2 (mm):	171.4
D3 (mm):	95
H1 (mm):	90
h (mm):	14
Nett Weight (kg):	40.5



Description

Manufactured from High Strength semi steel and precision machined
Jaws are case-hardened to minimise wear
Operating screws are made from alloy steel and case-hardened.
Supplied with camlock pins, 1 set of jaws and wrench.



Product Brochure For C256A

Specific Features



Camlock Mount



Included Accessories



Front View

Recommended Accessories

A358
Sky Hook Lifting Device

A358A
Chuck Hook

A358C
Bolt Down Adaptor

