

Product Brochure For C259

4 Jaw Independent Lathe Chuck - K72-500

Ø500mm

Back Plate Mount

On Sale

Ex GST

Inc GST

~~\$1,282.00~~

~~\$1,474.30~~

\$1,026.09

\$1,180.00



ORDER CODE:	C259
Chuck Size:	Ø500
External Jaw Range (mm):	125 - 500
Internal Jaw Range (mm):	35 - 300
Speed (rpm):	800
D1 (mm):	200
D2 (mm):	236
D3 (mm):	170
H1 (mm):	106
h (mm):	8
z-d (mm):	4 - M20
Nett Weight (kg):	102

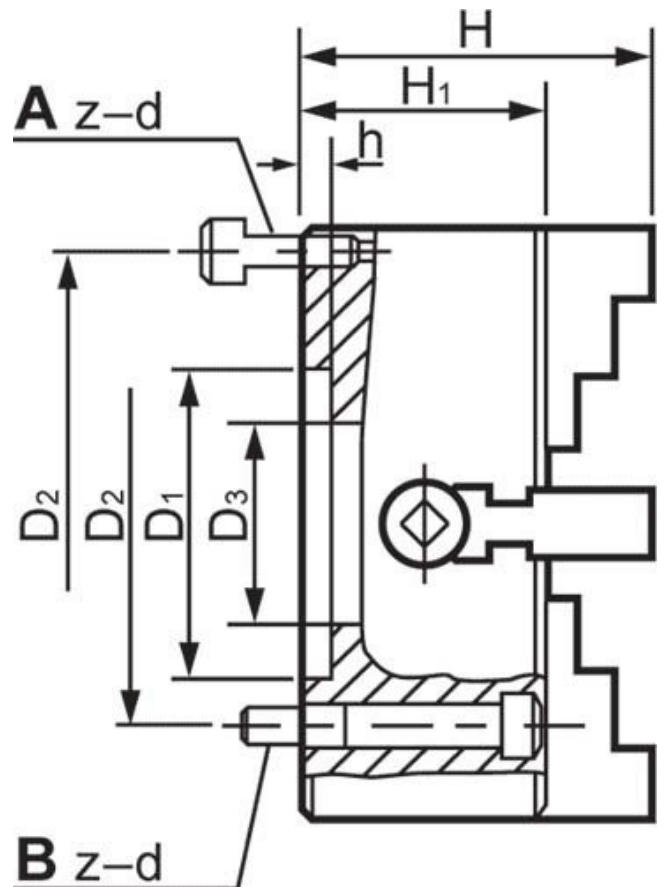


Description

Manufactured from High Strength semi steel and precision machined
Jaws are case-hardened to minimise wear
Operating screws are made from alloy steel and case-hardened

Features

- Front Mounting



Product Brochure For C259

Specific Features



Rear View



Included Accessories



Front View

Recommended Accessories

L287
D1-4 Camlock Back Plate

L2875
D1-5 Camlock Back Plate

L289
D1-6 Camlock Back Plate

L286
D1-8 Camlock Back Plate



L2884
D1-11 Camlock Back Plate

A358
Sky Hook Lifting Device

A358A
Chuck Hook

A358C
Bolt Down Adaptor

