

Product Brochure For C2706

3 Jaw Self Centring Lathe Chuck - K11-500/D11

Ø500mm

D1-11 Camlock Mount

On Sale

Ex GST

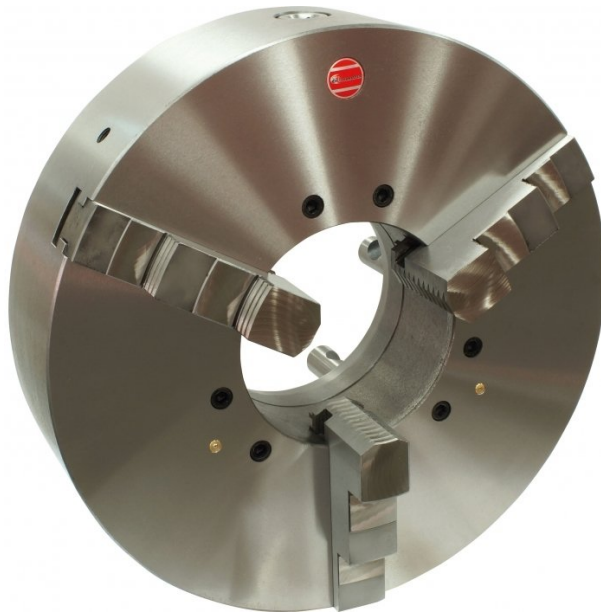
Inc GST

\$2,624.00

\$3,017.60

\$2,102.61

\$2,418.00



ORDER CODE:	C2706
Chuck Size (mm):	Ø500
Camlock:	D1-11
Outside Jaw (mm):	11.5 - 210
Inside Jaw (mm):	150 - 500
Speed (rpm):	800
D1 (mm):	196.87
D2 (mm):	235
D3 (mm):	190
H (mm):	222
H1 (mm):	135
h (mm):	20
Nett Weight (kg):	155



Description

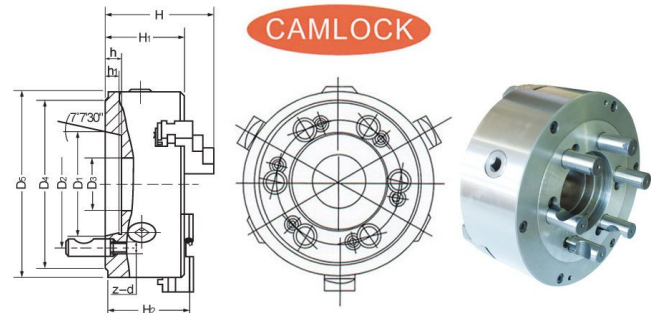
K11 SERIES Cast Iron Body
Standard GB/T 4346.2-2002

Features

- World-class and industry leader in the manual lathe chuck field with over 30 years of manufacturing
- ToolMaster quality assurance and accuracy testing ensure standards remain high. ToolMaster is ISO 9001-2000 approved
- Each chuck is supplied with a set of inside and outside jaws and a chuck key

Includes

- Outside jaws
- Inside jaws
- Chuck key



Product Brochure For C2706

Specific Features



Front View



Camlock Mount



Included Accessories

Recommended Accessories

A358
Sky Hook Lifting Device

A358A
Chuck Hook

A358C
Bolt Down Adaptor

