

Product Brochure For C280

## 3 Jaw Self Centring Lathe Chuck - K11 SERIES

Ø130mm  
Front Mount

**On Sale**

<b>Ex GST</b>	<b>Inc GST</b>
<b>\$220.00</b>	<b>\$253.00</b>
<b>\$175.65</b>	<b>\$202.00</b>



ORDER CODE:	C280
Mounting Type:	Front Mount
Chuck Size (mm):	Ø130
Outside Jaw (mm):	3 - 40
Inside Jaw (mm):	40 - 130
Speed (rpm):	3000
D1 (mm):	100
D2 (mm):	115
D3 (bore) (mm):	30
H (mm):	86
H1 (mm):	60.5
H2 (mm):	~
h (lowercase) (mm):	3.5
z-d (mm):	3 x M8
Nett Weight (kg):	6



### Description

K11 Series front mount cast iron body lathe chucks are built to GB/T 4346.2-2002 standard, and supplied with one piece standard and reverse jaws.

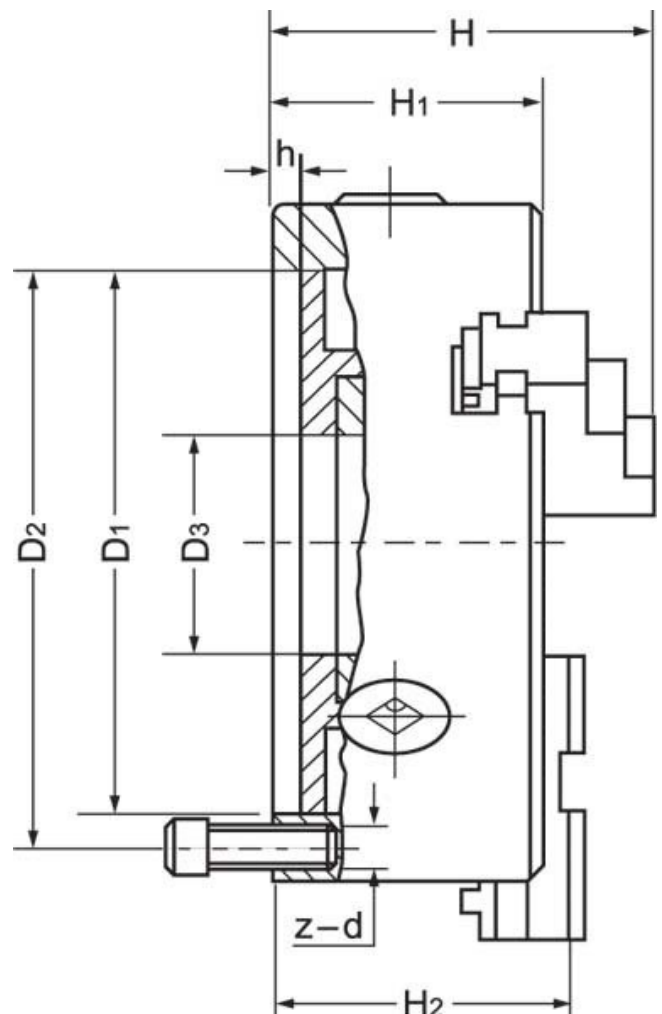
World-class and industry leader in manufacturing manual lathe chucks for over 30 years. ToolMaster precision tolerance lathe chucks are ISO 9001-2000 approved, and ensure high quality with accuracy testing on every chuck.

### Features

- Ideal for Rotary Tables or Dividing Heads

### Includes

- Outside jaws
- Inside jaws
- Mounting screws
- Chuck key



Product Brochure For C280

---

**Specific Features**



Rear View



Included Accessories



Front View

**Recommended Accessories**

L287

D1-4 Camlock Back Plate



R006

Vertex Rotary Table



M055

Magnetic Base and Dial Indicator

