

Product Brochure For C299

Safety Lock Drill Chuck - Keyless Type

Ø1 - Ø13mm
JT-6 Taper Mount



On Sale

Ex GST	Inc GST
\$110.00	\$126.50
\$87.83	\$101.00

ORDER CODE:	C299
Duty Type:	Heavy Duty
Type:	Keyless (Lock Syetem)
Capacity (mm):	1 - 13
Mount:	JT6
Spare Chuck Key to suit:	~
Nett Weight (kg):	1.08



Description

Industrial heavy duty keyless drill chucks. Keyless drill chucks are a dependable and highly-affordable method for holding drills. Knurled grips make drill bit changes quick and secure. Fitted with a locking mechanism that ensures that the chuck will not open if the spindle suddenly stops

Features

- Superior gripping - Self tightening feature to increase gripping force
- Precision manufactured
- Positive locking prevents loosening when operating

Product Brochure For C299

Recommended Accessories

D442
2MT x JT6 Drill Chuck Arbor

D443
3MT x JT6 Drill Chuck Arbor

D454
4MT x JT6 Drill Chuck Arbor

D444
R8 x JT6 Drill Chuck Arbor -
7/16"UNF Threaded Shank

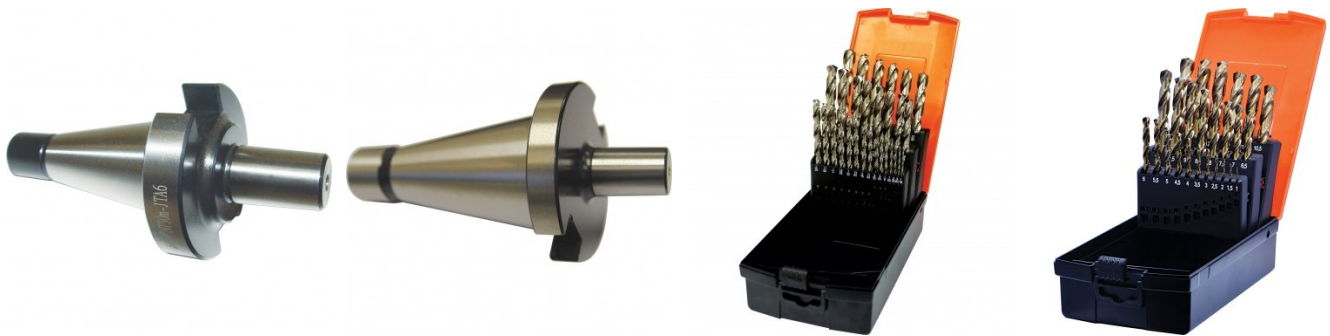


D450
NT30 x JT6 Drill Chuck Arbor -
M12 Threaded Shank

D446
NT40 x JT6 Drill Chuck Arbor -
M16 Threaded Shank

D1282
Imperial 135° Precision HSS
Drill Set - 29 Piece

D1272
Metric 135° Precision HSS Drill
Set - 25 Piece



Product Brochure For C299

D126
Metric 135° Precision HSS Drill
Set - 170 Pieces



D502
HSS Centre Drill - No. 2



D503
HSS Centre Drill - No.3



D504
HSS Centre Drill - No. 4



D505
HSS Centre Drill - No. 5



T019
Metric HSS Hand Tap & Drill Set
- 29 Piece



D107
HSS Step Drill Sets



D106
Countersink Sets – 90° Three
Flute



D105
Deburring Countersink Sets –
90° Cross Hole

