

Product Brochure For D444

## R8 x JT6 Drill Chuck Arbor - 7/16" UNF Threaded Shank

Suits Ø13mm Drill Chucks

**On Sale**

Ex GST

Inc GST

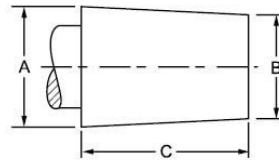
~~\$56.00~~

~~\$64.40~~

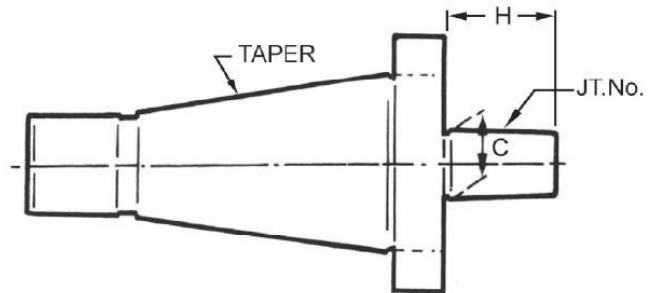
**\$43.48**

**\$50.00**

ORDER CODE:	D444
Long Taper (MT):	R8
Short Taper (JT):	JT6
Suits Chuck Size (mm):	13
Threaded Shank:	7/16" UNF



JACOBS TAPER SPECIFICATIONS			
TAPER	A	B	C
JT2	0.559"	0.487"	0.875"
JT3	0.811"	0.748"	1.219"
JT6	0.676"	0.624"	1.000"



### Description

Drill chuck arbors have one end which is the taper of the machine. The most common are Morse Tapers for mounting in a drill press spindle or lathe, or NT tapers for mounting in Milling machines. The other end of the arbor is a short taper called a Jacobs Taper that is driven into the taper of the chuck body. The JT taper or Jacobs Taper is the most commonly used taper for mounting a drill chuck. The most common tapers used in Australia are JT2, JT3, JT4 & JT6

### Features

- Hardened & precision ground with 7/16" UNF drawbar thread

## Product Brochure For D444

---

### Specific Features



Drawbar Side

### Recommended Accessories

C289

Heavy Duty Drill Chuck - Keyed Type

C299

Safety Lock Drill Chuck - Keyless Type

C292

Industrial Drill Chuck - Keyless Type

