

Product Brochure For D451

NT30 x JT3 Drill Chuck Arbor

Suits Ø16mm Drill Chucks

On Sale - Back In Stock Soon

Ex GST

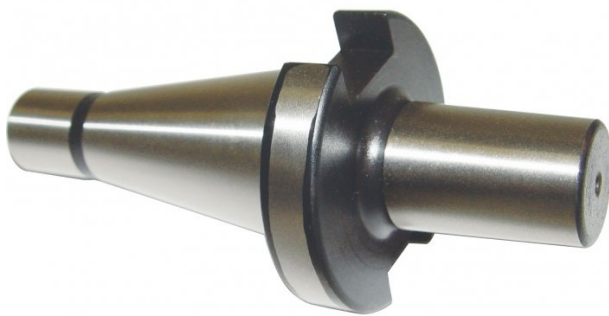
~~\$98.00~~

\$77.39

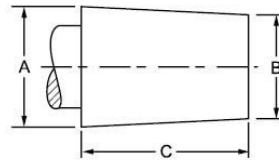
Inc GST

~~\$112.70~~

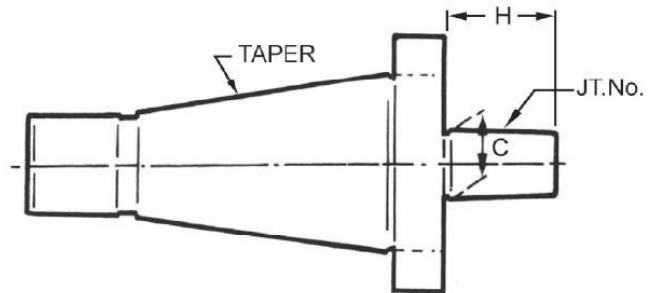
\$89.00



ORDER CODE:	D451
Long Taper (MT):	NT30
Short Taper (JT):	JT3
Suits Chuck Size (mm):	16
Threaded Shank:	M12



JACOBS TAPER SPECIFICATIONS			
TAPER	A	B	C
JT2	0.559"	0.487"	0.875"
JT3	0.811"	0.748"	1.219"
JT6	0.676"	0.624"	1.000"



Description

Drill chuck arbors have one end which is the taper of the machine. The most common are Morse Tapers for mounting in a drill press spindle or lathe, or NT tapers for mounting in Milling machines. The other end of the arbor is a short taper called a Jacobs Taper that is driven into the taper of the chuck body. The JT taper or Jacobs Taper is the most commonly used taper for mounting a drill chuck. The most common tapers used in Australia are JT2, JT3, JT4 & JT6

Features

- Hardened & precision ground with M12 drawbar thread

Product Brochure For D451

Recommended Accessories

C290

Heavy Duty Drill Chuck - Keyed
Type

C294

Industrial Drill Chuck - Keyless
Type

