

## Product Brochure For D590C

### Medium-Duty Bench Drill & Clamp Package Deal - BD-325

Table Tilts Left & Right To 45° & Rotates 360°  
Ø16mm Drill Capacity with 2MT Spindle Taper

#### On Sale - Package Deal

Ex GST	Inc GST
\$440.00	\$506.00
\$329.57	\$379.00

#### Package Contents - SAVE \$138.50 (Inc)

1 x D590 - Medium-Duty Bench Drill - Belt Drive BD-325	\$492.20
1 x C103 - 228mm Multi-Purpose Locking Clamp VGP9	\$25.30

**Normal Price (Inc): \$517.50**



ORDER CODE:	D590C
MODEL:	BD-325 + VGP9 Package Deal
Type - Bench / Pedestal:	Bench
Duty Type:	Medium-Duty
Drilling Diameter Capacity (mm):	Ø16
Spindle Taper (MT):	2
Spindle Travel (mm):	80
Throat Depth (mm):	162.5
Quill Diameter (mm):	40
Collar Diameter (mm):	55
Column Diameter (mm):	72
Spindle To Table (mm):	450
Spindle To Base (mm):	630
Table Shape:	Round
Table Size (mm):	290
Work Light:	~
Micro Switch On Pulley Guard:	Yes
Drive Belt Type:	A Section
Spindle Speed Steps (No.):	12
Spindle Speed Range (rpm):	280 - 2380
Motor Power (kW / hp):	0.75 / 1
Voltage / Amperage (V / amp):	240 / 10
Overall Height (mm):	980
Nett Weight (kg):	41.5

### Description

PACKAGE DEAL - BD-325 Bench Drill + 9" Locking Clamp

This versatile & reliable BD-325 bench drill is very useful for anyone requiring to drill consistent accurate holes and is commonly suited for any home workshop or garage use.

Mostly constructed from cast iron and machined steel to provide superior stability and strength. Powered by a 0.75kW, 1hp, 240-volt induction motor and coupled to a 12-belt speed pulley system offering wide range of speeds between 280-2380rpm. The down feed handle is also made from cast iron in one solid piece design and fitted with soft hand grips for your comfort & convenient drilling depth feed control.

The drill quill is equipped with a 2 morse taper spindle allowing you to fit 2MT drill bits directly to the spindle or 1MT drill bits with an optional adaptor. A quality Ø3-Ø16mm keyed drill chuck with 2MT arbor is included & fitted. The drill table can tilt left or right, rotate 360 degrees and the height is also easily adjusted up or down via rack & pinion hand lever & can be locked into position. Furthermore, the whole table assembly can be swivelled away to allow the machined base to be used as a work support.

The magnetic safety switch with emergency stop is conveniently front mounted for quick access. The drill also includes an adjustable safety drill chuck guard and the belt cover is equipped with a safety switch to ensure safe belt speed changing.

### Features

- BD-325 - Bench Drill - Belt Drive - (D590)
- Ideal for home, workshop or farm use
- Quiet belt drive system
- Quick action V-belt tensioning lever
- Drill chuck key holder mounted on right side of the machine

## Product Brochure For D590C

- Adjustable safety drilling chuck guard with flip up screen
- One piece cast iron drilling lever with comfort grips
- Safety micro switch on pulley guard
- Safety magnetic-type switch
- Rack & pinion table height adjustment with locking lever
- Thick walled column ensuring greater rigidity
- Table tilts left & right to 45° & rotates 360°
- Drilling depth stop
- Slotted work table
- 12 Spindle speeds - 280, 420, 440, 550, 620, 660, 1150, 1180, 1400, 1550, 1830, 2380rpm
- Fan-cooled, copper wound 240V motor
- VGP9 - 9" Drill Press Locking Clamp - (C103)
- Fastens to drill press table slots and secures with a finger type locking nut
- Knurled nut adjusts the jaw opening and clamping pressure
- Hardened alloy steel with chrome plating
- Quick release lever to unlock the jaw
- Swivelling jaw pad for parallel clamping
- 2" maximum jaw opening
- 3" throat depth

### Includes

- BD-325 - Bench Drill - Belt Drive (D590)
- VGP9 - 9" Drill Press Locking Clamp (C103)
- 16mm keyed drill chuck and arbor
- Chuck key to suit
- Drill drift tool to remove drill chuck or taper shank drills

### Optional Accessories

- Replacement 16mm Drill Chuck (C290)
- Replacement 2MT x JT3 Arbour (D442A)

### Specific Features



Drill Press Locking Clamp C103



Bench Drill Shown with Locking Clamp



Shown Clamping Job on Drilling Machine Close Up



Shown Clamping Job on Drilling Machine Low View



Left View



Magnetic Switch



Emergency Stop Switch



Adjustable Safety Chuck Guard With Flip Up Screen

Product Brochure For D590C



Safety Chuck Guard Flipped Up



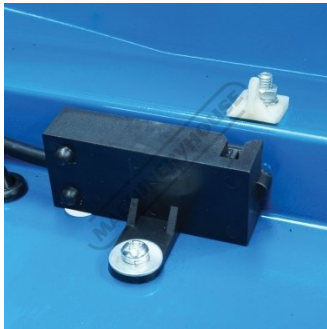
1 Piece Cast Iron Drilling Lever



80mm Spindle Travel



Drilling Depth Stop Setting With Scale



Safety Micro Switch on Pulley Guard



Head Side View



Chuck Key Holder



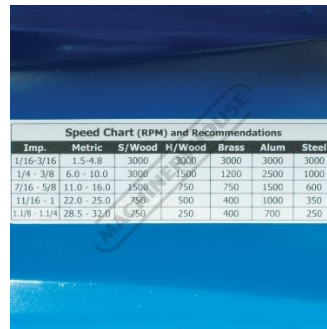
A Section Belt Drive System



Belt Tension Lever and Lock



Speed Chart



Recommended Speed for Drill Size and Material



Tilting and Rotating Cast Iron Table



Tilt Table Scale



Work Table



Table-Height-Adjustment-Crank



Base

Product Brochure For D590C



Drill Drift

**Recommended Accessories**

W3425  
Drill Press Roller Support



C103  
228mm Multi-Purpose Locking Clamp



P220  
Gravity Feed Coolant System



S090A  
Soluble Metal Cutting Fluid - 1 Litre



C086  
Clamp Kit Tee Nuts



L300  
Magnetic Swarf Remover



M9991  
Magnetic Floor Sweeper



D1272  
Metric 135° Precision HSS Drill Set - 25 Piece



Product Brochure For D590C

**D1282**  
Imperial 135° Precision HSS  
Drill Set - 29 Piece



**D126**  
Metric 135° Precision HSS Drill  
Set - 170 Pieces



**D1171**  
Metric Industrial HSS Reduced  
Shank Drill Set



**D1181**  
Imperial Industrial HSS Reduced  
Shank Drill Set



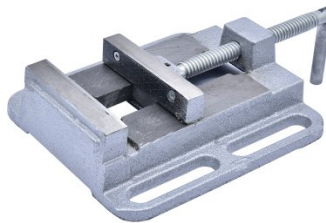
**D117**  
Metric HSS Reduced Shank Drill  
Set



**P090**  
Pipe & Tube Notcher  
Attachment



**V124**  
Drill Press Vice



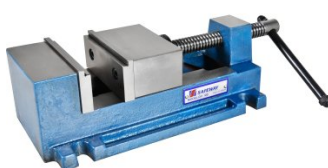
**V144**  
Drill Press Vice



**V145**  
Drill Press Vice



**V141**  
Safeway Precision Drill Press  
Vice



**V114**  
Tilting Drill Press Vice



**V1204**  
Compound Drill Vice



Product Brochure For D590C

V1205  
Compound Drill Vice



C292  
Industrial Drill Chuck - Keyless Type



C294  
Industrial Drill Chuck - Keyless Type



D442  
2MT x JT6 Drill Chuck Arbor



D442A  
2MT x JT3 Drill Chuck Arbor



O043  
Rust & Corrosion Preventive



O042  
General Purpose Lubricant & Corrosion Inhibitor



O044  
Rust & Corrosion Preventive



M800  
Rubber Mat - Anti-Fatigue



M805  
Rubber Mat - Anti-Fatigue

