

Product Brochure For D598

Heavy-Duty Pedestal Drill - Belt Drive - PD-440

Table Tilts Left & Right To 45°

Ø28mm Drill Capacity with 3MT Spindle Taper

On Sale

Ex GST

Inc GST

\$1,038.00

\$1,193.70

\$752.17

\$865.00



ORDER CODE:	D598
MODEL:	PD-440
Type - Bench / Pedestal:	Pedestal
Duty Type:	Heavy-Duty
Drilling Diameter Capacity (mm):	Ø28
Spindle Taper (MT):	3
Spindle Travel (mm):	120
Throat Depth (mm):	220
Quill Diameter (mm):	52
Collar Diameter (mm):	75
Column Diameter (mm):	92
Spindle To Table (mm):	765
Spindle To Base (mm):	1225
Table Shape:	Square
Table Size (mm):	350 x 350
Work Light:	Yes
Micro Switch On Pulley Guard:	Yes
Drive Belt Type:	A Section
Spindle Speed Steps (No.):	12
Spindle Speed Range (rpm):	150 - 2450
Motor Power (kW / hp):	1.1 / 1.5
Voltage / Amperage (V / amp):	240 / 10
Overall Height (mm):	1710
Nett Weight (kg):	106



Description

If you need to drill holes up to Ø28mm & require a heavy-duty 3 morse taper drilling machine with all the features to make your job easier and that represents great value for investment, this PD-440 pedestal drill could be the machine for you.

This machine is heavy duty rated and the large drill head has a work light fitted underneath to shine directly onto your job, the quill diameter is larger to increase accuracy when using & the unique square table offers more surface area to work on, and additionally allows T-nut & clamps to be used on this design.

Mostly constructed from cast iron and machined steel to provide superior stability and strength. Powered by a 1.1kW, 1.5hp, 240-volt induction motor and coupled to a 12-belt speed pulley system offering wide range of speeds between 150-2450rpm. The down feed handle is also made from cast iron in one solid piece design and fitted with soft hand grips for your comfort & convenient drilling depth feed control.

The drill quill is equipped with a 3 morse taper spindle allowing you to fit 3MT drill bits directly to the spindle or 1-2MT drill bits with optional adaptors. A quality Ø3-Ø16mm keyed drill chuck with 3MT arbor is included & fitted. The drill table can tilt left or right, and the height is also easily adjusted up or down via rack & pinion hand lever & can be locked into position. Furthermore, the whole table assembly can be swivelled away to allow the machined base to be used as a work support.

The magnetic safety switch with emergency stop is conveniently front mounted for quick access. The drill also includes an adjustable safety drill chuck guard and the belt cover is equipped with a safety switch to ensure safe belt speed changing.

Features

- Ideal for home, workshop or farm use
- Quiet V-belt drive system
- Quick action belt tensioning lever
- Drill chuck key holder mounted on right side of the machine
- Adjustable safety drilling chuck guard with flip up screen
- One piece cast iron drilling lever with comfort grips
- Safety micro switch on pulley guard
- Safety magnetic-type switch
- Rack & pinion table height adjustment with locking lever
- Thick walled column ensuring greater rigidity
- Table tilts left & right to 45°

Product Brochure For D598

- Drilling depth stop
- Work light mounted underneath drill head to provide direct light onto the work piece
- T slotted work table
- 12 Spindle speeds - 150, 240, 270, 330, 430, 470, 830, 1030, 1270, 1430, 1790, 2450rpm
- Fan-cooled, copper wound 240V motor

Includes

- 16mm keyed drill chuck and arbor
- Chuck key to suit
- Drill drift tool to remove drill chuck or taper shank drills

Optional Accessories

- Replacement 16mm Drill Chuck (C290)
- Replacement 3MT x JT3 Arbour (D443A)

Specific Features



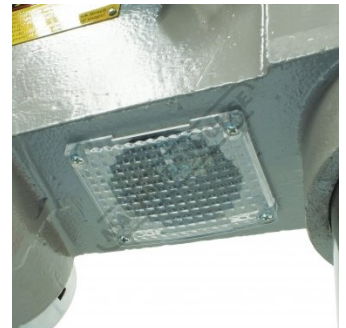
Left View



Magnetic Switch



Emergency Stop Switch and Light Switch



Work Light



Adjustable Safety Chuck Guard with Flip Up Screen



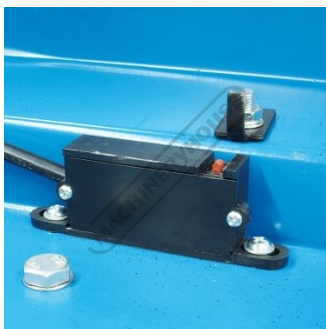
Safety Chuck Guard Flipped Up



1 Piece Cast Iron Drilling Lever



Drilling Depth Stop Setting With Scale



Safety Micro Switch on Pulley Guard



Head Side View



A Section Belt Drive System



Chuck Key Holder

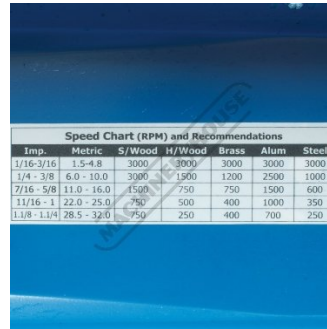
Product Brochure For D598



Belt Tension Lever and Lock



Speed Chart



Recommended Speed for Drill Size and Material



Tilting and Rotating Cast Iron Table



Work Table



Table Height Adjustment Crank



Base



Drill Drift

Recommended Accessories

W3425
Drill Press Roller Support

C086
Clamp Kit Tee Nuts

P220
Gravity Feed Coolant System

S090A
Soluble Metal Cutting Fluid - 1 Litre



Product Brochure For D598

L300
Magnetic Swarf Remover



M9991
Magnetic Floor Sweeper



D1272
Metric 135° Precision HSS Drill Set - 25 Piece



D1282
Imperial 135° Precision HSS Drill Set - 29 Piece



D126
Metric 135° Precision HSS Drill Set - 170 Pieces



D1171
Metric Industrial HSS Reduced Shank Drill Set



D1181
Imperial Industrial HSS Reduced Shank Drill Set



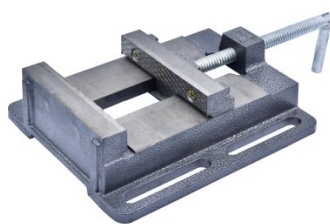
D117
Metric HSS Reduced Shank Drill Set



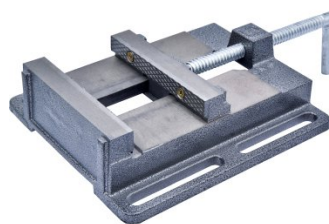
V124
Drill Press Vice



V125
Drill Press Vice



V126
Drill Press Vice



V144
Drill Press Vice



Product Brochure For D598

V145
Drill Press Vice



V141
Safeway Precision Drill Press Vice



V142
Safeway Precision Drill Press Vice



V143
Safeway Precision Drill Press Vice



V114
Tilting Drill Press Vice



V1204
Compound Drill Vice



V1205
Compound Drill Vice



T004
Reversible Tapping Chuck - Adjustable Clutch



T005
Reversible Tapping Chuck - Adjustable Clutch



C292
Industrial Drill Chuck - Keyless Type



C294
Industrial Drill Chuck - Keyless Type



D443
3MT x JT6 Drill Chuck Arbor Type



Product Brochure For D598

D443A
3MT x JT3 Drill Chuck Arbor



D422
Drill Sleeve - Morse Taper



P090
Pipe & Tube Notcher
Attachment



O043
Rust & Corrosion Preventive



O042
General Purpose Lubricant &
Corrosion Inhibitor



O044
Rust & Corrosion Preventive



M800
Rubber Mat - Anti-Fatigue



M805
Rubber Mat - Anti-Fatigue

