

Product Brochure For D822

## Boring Sleeve - Straight - CHR 16-32

Suits CNC Lathes  
Ø32mm x Ø16mm



### Description

Used in the turrets of CNC lathes to hold boring bars and other cutting tools.  
Universal design allows these sleeves to be fitted to all CNC machines with turrets

### Features

- Precision ground
- Clamping Flat for clamping the sleeve into the turret
- Recessed grub screws to clamp the item

**On Sale - Back In Stock Soon**

Ex GST

~~\$86.00~~

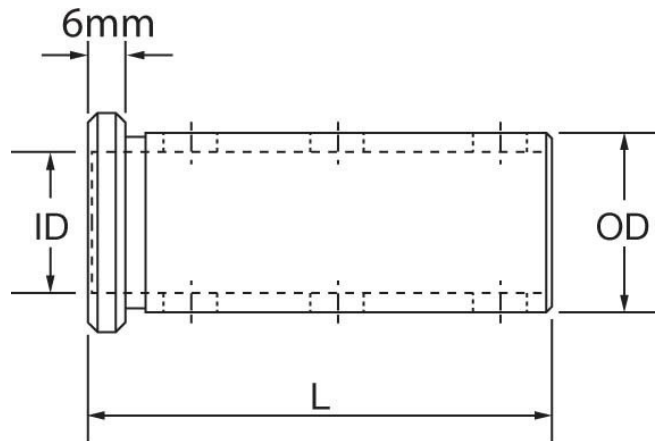
**\$68.70**

Inc GST

~~\$98.90~~

**\$79.00**

ORDER CODE:	D822
MODEL:	CHR 16-32
Type:	Set Screws
OD (mm):	32
ID (mm):	16mm
L (mm):	86
L1 (mm):	~



Product Brochure For D822

---

**Recommended Accessories**

L022  
Right Hand Boring Bar

L036  
Internal Threading

L037  
Internal Threading

