

Product Brochure For D8253

Boring Sleeve - Straight - CHR 32-3MT

Suits CNC Lathes
Ø32mm x 3MT



On Sale

Ex GST

~~\$98.00~~

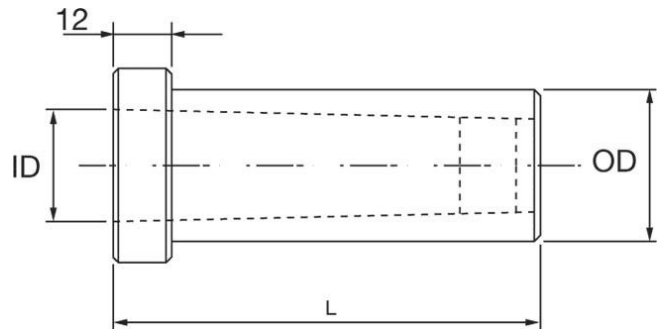
\$76.52

Inc GST

~~\$112.70~~

\$88.00

ORDER CODE:	D8253
MODEL:	CHR 32-2MT
Type:	Plain
OD (mm):	32
ID (mm):	3MT
L (mm):	88
L1 (mm):	~



Description

Used in the turrets of CNC lathes to hold morse taper drills.
Universal design allows these sleeves to be fitted to all CNC machines with turrets

Features

- Precision ground inside and out
- Clamping Flat for clamping the sleeve into the turret
- Drive slot for the tang of the taper shank drill

Product Brochure For D8253

Recommended Accessories

D422

Drill Sleeve - Morse Taper

