

Product Brochure For D826

Boring Sleeve - Straight - CHR 16-40

Suits CNC Lathes
Ø40mm x Ø16mm



On Sale - Back In Stock Soon

Ex GST

~~\$98.00~~

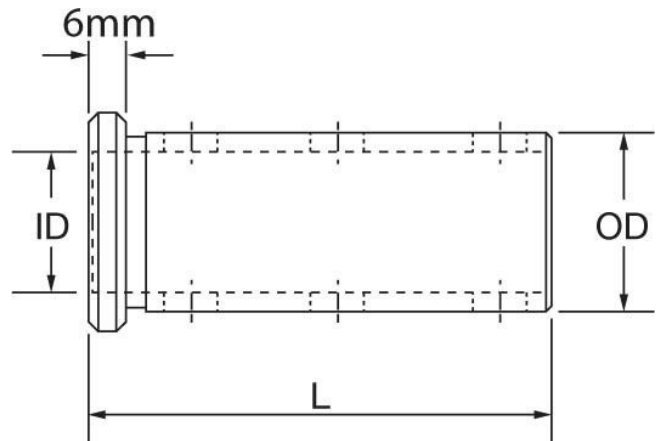
\$76.52

Inc GST

~~\$112.70~~

\$88.00

| | |
|-------------|------------|
| ORDER CODE: | D826 |
| MODEL: | CHR 16-40 |
| Type: | Set Screws |
| OD (mm): | 40 |
| ID (mm): | 16mm |
| L (mm): | 96 |
| L1 (mm): | ~ |



Description

Used in the turrets of CNC lathes to hold boring bars and other cutting tools.
Universal design allows these sleeves to be fitted to all CNC machines with turrets

Features

- Precision ground
- Clamping Flat for clamping the sleeve into the turret
- Recessed grub screws to clamp the item

Product Brochure For D826

Recommended Accessories

L022
Right Hand Boring Bar

L036
Internal Threading

L037
Internal Threading

