

Product Brochure For D828

Boring Sleeve - Straight - CHR 25-40

Suits CNC Lathes
Ø40mm x Ø25mm

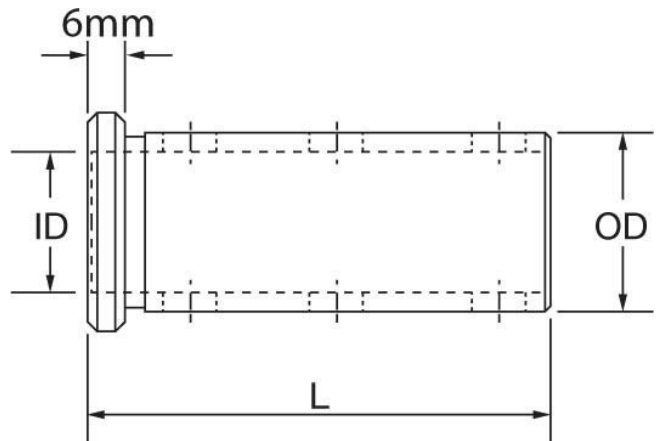


On Sale

Ex GST
~~\$98.00~~
\$76.52

Inc GST
~~\$112.70~~
\$88.00

ORDER CODE:	D828
MODEL:	CHR 25-40
Type:	Set Screws
OD (mm):	40
ID (mm):	25mm
L (mm):	96
L1 (mm):	~



Description

Used in the turrets of CNC lathes to hold boring bars and other cutting tools. Universal design allows these sleeves to be fitted to all CNC machines with turrets

Features

- Precision ground
- Clamping Flat for clamping the sleeve into the turret
- Recessed grub screws to clamp the item

Product Brochure For D828

Recommended Accessories

L024

Right Hand Boring Bar

L416

Right Hand Boring Bar

