

Product Brochure For F320

Meat & Bone Bench Band Saw - Stainless Steel - MB-210

Slide Out Bottom Tray To Catch Blade Off Cut Meat Shavings
185 x 240mm Capacity

On Sale

Ex GST	Inc GST
\$1,574.00	\$1,810.10
\$1,200.00	\$1,380.00



ORDER CODE:	F320
MODEL:	MB-210
Type:	Meat & Bone Saw & Stainless Steel
Capacity:	185 x 240mm
Band Saw Blade Size (L x W x T) (mm):	1650 x 13
Band Saw Blade Code:	F320A & F320B
Motor Power (kW / hp):	0.75 / 1
Voltage (V):	240
Nett Weight (kg):	55



Description

Let's just cut right into it, the MB-210 Carnivore Meat & Bone Band saw is a must-have machine to help speed up the butchering process for your restaurant, farm or home kitchen or anywhere you need to process large cuts of meat.

This powerful, heavy duty meat band saw slices through meat and bone like a knife through butter. Even the toughest cuts of meat and the hard bones are no match for this machine when using our top-quality band saw blades.

Made from high quality food grade stainless steel and powered by a 750-watt 240V motor, its construction is extremely durable and reliable. Another feature and user-friendly design is that changing the blade is very quick & simple unlike other models in the market.

So, if you have been looking for a heavy-duty meat band saw that you can count on- look no further than the MB-210 Carnivore Meat & Bone Saw. This incredible band saw machine is the only meat & bone saw that you'll ever need!

Features

- Perfect for the restaurant, farmer or home butcher
- High quality food grade stainless steel construction for superior hygiene
- Good size table area 440 x 465mm (WxD)
- 185mm throat depth x 240mm height capacity
- Adjustable cut length stop guide from 0 to 165mm wide
- Slide out bottom tray to catch blade off cut meat shavings
- Bottom blade wheel wiper to clean meat shavings of the drive wheel
- Top & bottom blade wipers to clean meat shavings of the blade
- Swivel safety blade guard with push handle to keep hands clear from the cutting blade
- Hinged door fitted with safety micro cut out switch
- 4 x stainless steel stabilising feet
- 0.75kW/1hp, 240V motor

Product Brochure For F320

Specific Features



Front View



Left View



Rear View



Right View



Top View



Top View Guard Up



Side View



Side View Guard Up



Blade Guard Up



Power Switch



Blade Guard Down



Adjustable Length Stop Guide



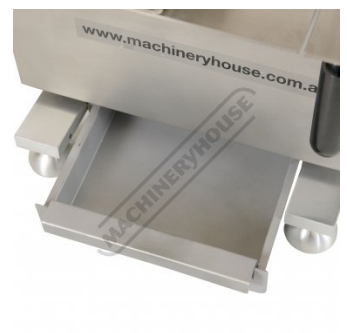
Table



Length Stop Guide



Length Stop Graduations



Bottom Tray

Product Brochure For F320



Blade Tension Handle



Blade Guard Door Handle



Side View With Blade Guard Open



Top Blade Wheel



Bottom Blade Wheel



Bottom Blade Wheel Setup



Safety Micro on Blade Guard



Stainless Steel Feet

Recommended Accessories

F400

Portable Steel Fire Pit & Grill



F320A

Band Saw Blade - Meat & Bone



F320B

Band Saw Blade - Meat & Bone



F370

Professional Butchers Knife Set - 11 Piece



Product Brochure For F320

F298
Stainless Steel Bench with
Splashback



F280
Stainless Steel Island Work
Bench



F305
Stainless Steel Corner Work
Bench



F310
Stainless Steel Drawer Unit -
Single Drawer



F355
Sausage & Salami Filler / Stuffer
5 Litre - Stainless Steel



F340
Mince Mixer - Stainless Steel



F330
Electric Meat Mincer - Stainless
Steel

