

## Product Brochure For K012

### Mill Drill Machine Package Deal - HM-32

Table Travel: (X) - 540mm (Y) - 190mm (Z) - 410mm

Includes Metric Cutters, Clamp Kit, Collet Chuck & Stand



ORDER CODE:	K012
MODEL:	HM-32 Package Deal
Digital Readout:	Optional
Type:	Vertical
Table Size (mm):	820 x 240
Column Type:	Ø115mm
Spindle Taper - Vertical:	3MT
Spindle Taper - Horizontal:	~
Longitudinal Travel (X-Axis) (mm):	540
Cross Travel (Y-Axis) (mm):	190
Vertical Travel (Z-Axis) (mm):	410
Type of Slides:	Dovetail
Ram Travel (mm):	~
Spindle to Table (mm):	455
Spindle to Base:	~
Spindle Travel / Diameter (mm):	130 / 75
Throat Depth (max.) (mm):	202
Tilting Head (Left ~ Right):	Fixed
Tilting Head (Forward ~ Back):	Fixed
Drilling Capacity (mm):	31.5
End Milling Capacity (mm):	22
Face Milling Capacity (mm):	80
Power Feed - Quill (mm/rev):	~
Power Feed - Longitudinal (X-Axis) (mm/min):	Optional
Power Feed - Cross (Y-Axis) (mm/min):	~
Power Feed - Vertical (Z-Axis) (mm/min):	~
Table T-Slot Size (inch / mm):	14
Work Table Load Capacity (kg):	50
Spindle Speeds Vertical (No./ rpm):	12 (100 - 2150)
Spindle Speeds Horizontal (No./ rpm):	~
Spindle Speeds - Universal Head:	~
Motor Power - Vertical Spindle (kW / hp):	1.5 / 2
Motor Power - Horizontal Spindle (kW / hp):	~
Motor Power - Universal Head:	~
Voltage / Amperage (V / amp):	240 / 10
Nett Weight (kg):	295

### Description

This is a rugged and well made machine with good capacities and plenty of power, a good choice for a serious home engineer.

The belt driven head provides a useful range of 12 speeds, 100-2080rpm and is quiet in operation, the head can be re-positioned on the column with the aid of a handle driven rack and pinion drive.

The table has three T slots to allow the work to be directly mounting to table, or in a milling vice, with two large diameter control hand wheels with metric calibrations for the longitudinal axis.

The fine down feed control can be locked firmly in position when milling and the mill also features an easy-to-read depth stop.

Optional power feed provides smooth variable speed drive to longitudinal travel

### Features

- Quiet B section belt drive system
- Milling head rotates 360° on column
- Extra large 820 x 240mm ground work table with T-slots
- Adjustable leadscrew nuts eliminating backlash on both axis

## Product Brochure For K012

- Fine feed hand wheel operating quill feed
- Forward and reverse on/off switch
- 3MT spindle with 75mm diameter quill
- Adjustable table and drill length stops
- Rack and pinion wind-up head
- Rear slide-way cover and slide clamps on all axis
- Spindle lock for quill
- Table lock on both axis
- Metric dial graduations @ 0.05mm for X & Y axis
- Optional power feed fits straight on the table

### Includes

- Machine stand (M135)
- 14mm clamp kit set (C0965)
- Collet chuck set (C922B)
- 10 piece metric slot & end mill set (M3301)
- Drill chuck
- 3MT arbor
- 3MT-2MT drill sleeve
- Face cutter & arbor
- 3" tilting vice
- Safety cutter guard
- 1/2" x 12tpi whitworth drawbar

### Specific Features



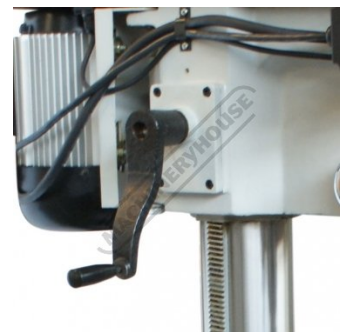
Forward & Reverse & On Off Switch



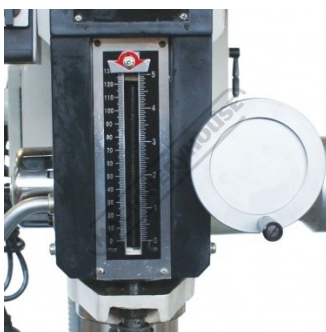
Fine feed handwheel operating quill feed



Head Controls



Rack and pinion wind up head



Quill Depth Scale



Quill Lock



Table Cross Feed Handle



Face Mill Cutter

Product Brochure For K012



Safety Micro switch on Belt Guard



Belt Drive 12 speeds 100 2080rpm



Left View



Motor Belt Tension Adjustment



Includes These Accessories

**Recommended Accessories**

**D695**  
3-Axis Optimum Digital Readout Counter - 1µm

**D694**  
1500mm Optimum Magnetic Digital Readout Scale

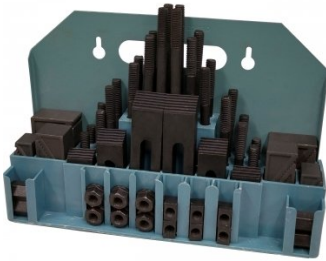
**M230**  
Power Feed Unit

**M240**  
Transformer



Product Brochure For K012

**C0965**  
Clamp Kit 58 piece - Workshop Series



**C922B**  
Collet & Chuck Set - 8 Piece



**C926**  
Collet & Chuck Set - 20 Piece



**M3301**  
Metric HSS Slot Drill & End Mill Set - 10 Piece



**M3321**  
Imperial HSS Slot Drill & End Mill Set - 10 Piece



**M3280**  
13mm HSS End Mill Long Series



**M182**  
Precision Boring Head Kit



**M192**  
Boring Head Shank



**M180**  
Boring Bar Set - 9 piece



**M250**  
Parallel Set - 8 Piece



**M530**  
Universal Milling Kit - 4 Piece



**M562**  
Face Mill Arbor



Product Brochure For K012

**M515**  
Face Mill 45° - Super High-Rake



**L065**  
KYOCERA Carbide Inserts - Milling



**M528**  
Face Mill 90° - Positive Rake



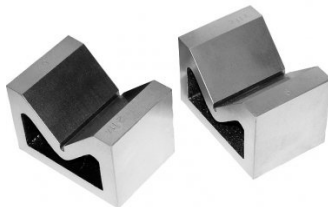
**M529**  
Face Mill 90° - Positive Rake



**L066**  
KYOCERA Carbide Inserts - Milling



**V004**  
Cast Iron Vee Block



**V105**  
Vertex K-Type Milling Vice



**R006**  
Vertex Rotary Table



**P235**  
Coolant Pump & Tank



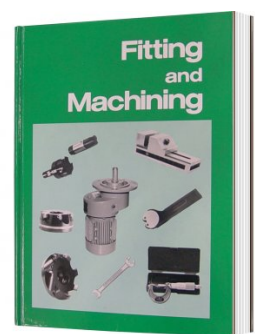
**S090A**  
Soluble Metal Cutting Fluid - 1 Litre



**S090**  
Soluble Metal Cutting Fluid - 5 Litre

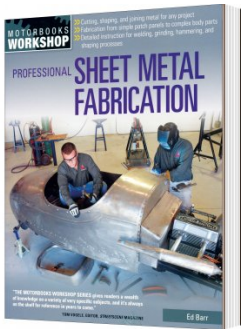


**L341**  
Fitting and Machining Technical Book

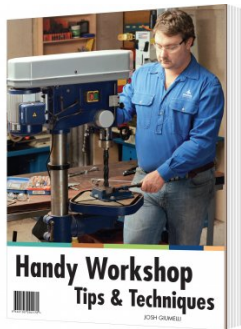


Product Brochure For K012

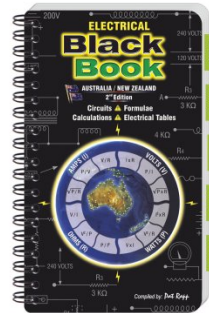
**L3455**  
Professional Sheet Metal Fabrication Book



**L345**  
Handy Workshop Tips & Techniques - 1st Edition



**L342**  
Electrical Black Book



**L300**  
Magnetic Swarf Remover



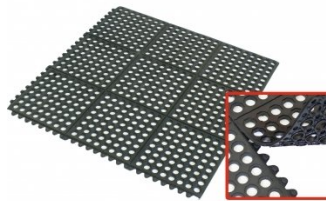
**M9991**  
Magnetic Floor Sweeper



**M800**  
Rubber Mat - Anti-Fatigue



**M805**  
Rubber Mat - Anti-Fatigue



**O043**  
Rust & Corrosion Preventive



**O042**  
General Purpose Lubricant & Corrosion Inhibitor



**O044**  
Rust & Corrosion Preventive

