

## Product Brochure For K035

# Industrial Work Bench Package Deal - IWB-40P5

1800 x 750 x 1725mm  
1000kg Table Top Load Capacity



### On Sale - Package Deal

Ex GST	Inc GST
\$2,062.00	\$2,371.30
\$1,691.30	\$1,945.00

### Package Contents - SAVE \$695.40 (Inc)

1 x A420 - Industrial Work Bench IWB-40	\$547.40
1 x A426 - Industrial Backing Panel - Bench Mount IBP-ST	\$379.50
4 x A440 - Hook - Single Prong SPH-75	\$4.60
4 x A442 - Hook - Double Prong DPH-75	\$6.90
1 x A444 - Plier Holder - Triple Prong TPH-150	\$9.20
1 x A446 - Holder - Spanner SH-135	\$16.10
1 x A448 - Holder - Screwdriver SDH-390	\$18.40
8 x A430 - Plastic Bucket BK-110	\$9.20
8 x A432 - Plastic Bucket BK-140	\$11.50
6 x A434 - Plastic Bucket BK-220	\$23.00
1 x T764 - 6 Drawer - Industrial Tooling Cabinet TC-750	\$913.10
1 x A422 - 2 Drawer - Industrial Under Bench Tooling Cabinet	<del>\$280.60</del>
1 x A359 - Pneumatic Stool GSP-795	\$126.50

**Normal Price (Inc): \$2,640.40**

ORDER CODE:	K035
MODEL:	IWB-40P5
Bench Material (Type):	Steel with Laminated Top & Package Deal
Table Top Load Capacity (kg):	1000
Number of Drawers (No.):	8
Table Dimensions (L x W x H) (mm):	1800 x 750 x 900
Nett Weight (kg):	240

## Description

Heavy Duty steel construction. Great heavy duty work bench for the workshop or garage.

The IWB-40 Industrial-duty work bench has a huge load capacity of 1000kg (1 Tonne). Constructed from heavy duty powder coated steel the multi-functional commercial frame provides maximum rigidity for the most demanding industrial applications. Finished with a rounded PVC edge the 41mm medium density laminated bench top will withstand heavy loads.

The louvred backing panel which incorporates a fixed top and bottom shelf is a great addition. A complete range of tool hooks, hangers and storage buckets are also available making storing and locating your tools much easier.

To complete the package a 6 drawer & 2 drawer tooling cabinets designed to fit underneath the bench is another addition as well as a stool. Featuring a range of plastic boxes in the top drawer it would be ideal for the storage of small parts such as screws etc. The lower drawers incorporate movable steel dividers which allow you to configure the space to suit your application

This great work bench package solution shown also includes a range of plastic storage buckets, hooks, holders and a sturdy stool.

## Features

- IWB-40 Work Bench:
  - Heavy duty steel fabricated frame with powder coated finish for maximum rigidity
  - Top Surface is 2mm high density laminate over 41mm thick medium density chipboard with bull nosed hard PVC edge
  - Easy to use screw out adjustable feet
  - High quality laminated medium density chipboard with a 1000kg load capacity, rounded PVC edge and also resistant to alkali and oil
- IBP-ST Backing Panel:
  - Backing panels can be assembled to suit your requirements, either top or bottom positions
  - Square holes suits optional hooks & holders
  - Louvre slots to suit optional buckets
  - Bottom & top tray shelves - for additional storage
  - 3 Vertical supports - with adjustable clamps to mount to work bench
- TC-750 Industrial Tooling Cabinet:
  - Heavy duty tooling cabinets, ideal for industrial applications and serious workshops
  - The sliding drawers are a welded strengthened single rail design coupled with high quality mechanical bearings for long lasting smooth

## Product Brochure For K035

---

- operation
- Each drawer is rated at 100kg load capacity with 97% drawer access
- Single Key lock design for safe storage. Each drawer has a mechanical safety lock which allows one drawer to be opened at a time, preventing the cabinet to tip over
- All top drawers include a series of different size plastic boxes for those small items
- All other drawers come with adjustable steel dividers. The wood top with frame is a great option to rest tooling and precious parts on top of the cabinet
- Top Drawer - 75mm high with moveable plastic division boxes
- Drawer 2 - 75mm high with moveable steel dividers 3x3 layout
- Drawer 3 & 4 - 100mm high with moveable steel dividers 3x3 layout
- Drawer 5 & 6 - 150mm high with moveable steel dividers 3x3 layout
  
- HC-2 - Industrial Under Bench Tooling Cabinet
- The HC-2 cabinet is designed mount under the IWB-40 work bench by using the mounting bracket supplied or it can be just screwed to your existing work bench
- Ideal for garages or workshops
- Heavy duty full extension sliding ball bearing drawers runners with 97% drawer access
- Key lockable drawers with a load capacity of 40kg each
- Drawer 1 - 100mm high, load capacity of 40kg and includes steel dividers
- Drawer 2 - 100mm high, load capacity of 40kg and includes steel dividers
  
- GSP-795 - Pneumatic Round Stool
- This pneumatic garage stool is great for mechanics, panel beaters, handyman & workshops etc
- Chrome plated heavy duty steel frame with footrest
- High density foam padded leather seat
- Pneumatic lever for adjustable height 675 - 795mm
- Seat allows 360° rotation
- Non slip rubber feet
- Ø360mm round x 60mm thick padded seat
- Ø420mm round footrest
  
- Includes:
- 4 x A440-SPH-75 Hook - Single Prong
- 4 x A442-DPH-75 Hook - Double Prong
- 1 x A444-TPH-150 Plier Holder - Triple Prong
- 1 x A446-SH-135 Holder - Spanner
- 1 x A448-SDH-390 Holder - Screwdriver
- 8 x A430-BK-110 Plastic Bucket
- 8 x A432-BK-140 Plastic Bucket
- 6 x A434-BK-220 Plastic Bucket
  
- Please Note: Table top load capacity is calculated on even weight distribution over entire table top area.

Product Brochure For K035

**Specific Features**



Backing Panel



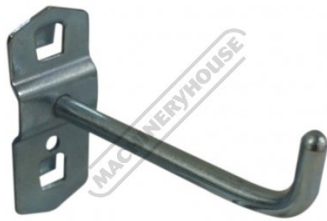
Top Tray



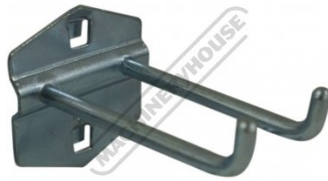
Bottom Tray



Shown Clamped to Table



Single Hook Prong



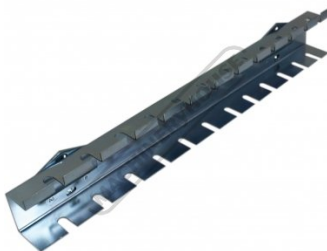
Double Hook Prong



Plier Holder Triple Hook



Spanner Holder



Screwdriver Holder



Small Plastic Bucket



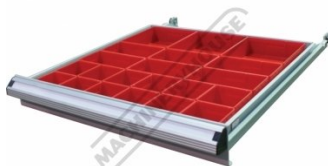
Medium Plastic Bucket



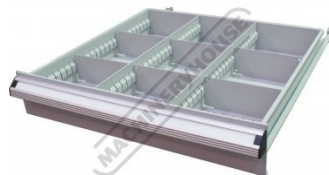
Large Plastic Bucket



6 Drawer Tooling Cabinet



Top Drawer with Plastic Buckets



Drawers with Steel Dividers



Heavy Duty Drawers

Product Brochure For K035



Drawer Locking Mechanism



Drawer Lock Bracket



Drawer in Lock Position



Heavy Duty Drawer Slides



Drawers with Safety Lock



Key Lock



2 Drawer Under Bench Mount



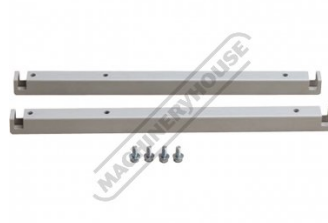
Front View



Drawers With Steel Dividers



Ball Bearing Slides



Connecting Rails



Chrome Plated Heavy Duty Steel Frame



High Density Foam Padded Seat



420mm Round Footrest



Pneumatic Height Adjustment Lever



Adjustable Height 675 795mm

Product Brochure For K035



Steel leg bracing



Adjustable Feet



Rounded-bull nosed hard PVC edge



Front View



Shown with Extra Optional Accessories

**Recommended Accessories**

**A420**  
Industrial Work Bench



**A426**  
Industrial Backing Panel - Bench Mount



**A422**  
2 Drawer - Industrial Under Bench Tooling Cabinet



**T764**  
6 Drawer - Industrial Tooling Cabinet



Product Brochure For K035

---

A430  
Plastic Bucket



A432  
Plastic Bucket



A434  
Plastic Bucket



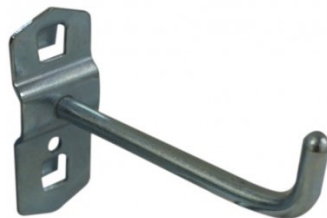
A436  
Plastic Bucket



A439  
Hook - Single Prong



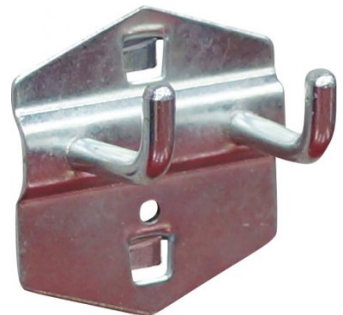
A440  
Hook - Single Prong



A4401  
Hook - Single Prong



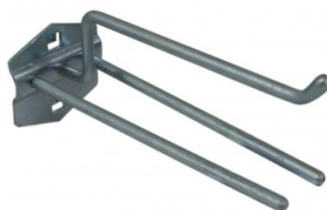
A441  
Hook - Double Prong



A442  
Hook - Double Prong



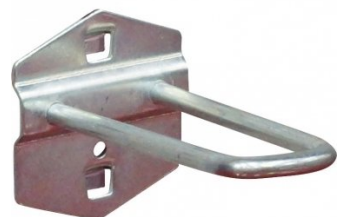
A444  
Plier Holder - Triple Prong



A4492  
Hook - U Shape Holder



A449  
Hook - U Shape Holder



Product Brochure For K035

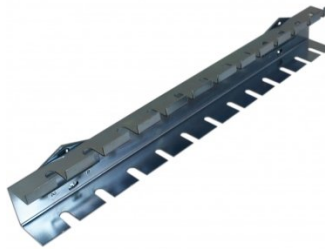
A4496  
Round Tool Holder - Loop



A446  
Holder - Spanner



A448  
Holder - Screwdriver



K029  
Industrial Work Bench Package Deal



K030  
Industrial Work Bench Package Deal



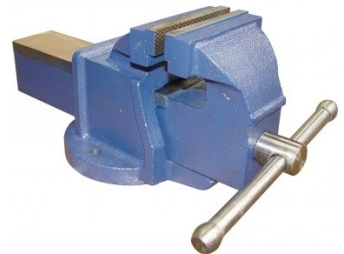
K031  
Industrial Work Bench Package Deal



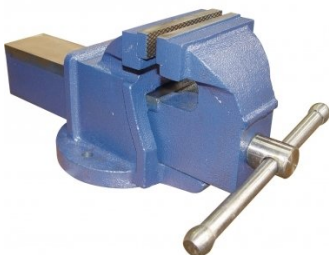
A359  
Pneumatic Stool



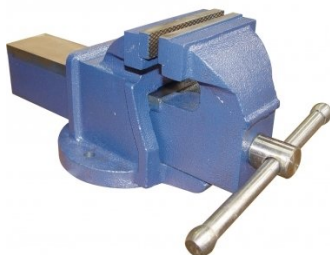
V088  
100mm Cast Iron Bench Vice



V089  
127mm Cast Iron Bench Vice



V090  
152mm Cast Iron Bench Vice



V067  
152mm Steel Offset Fabricated Bench Vice

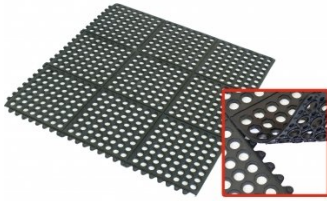


M800  
Rubber Mat - Anti-Fatigue Bench Vice



Product Brochure For K035

**M805**  
Rubber Mat - Anti-Fatigue



**G160**  
Industrial Bench Grinder



**G160A**  
Industrial Bench Grinder



**G161**  
Industrial Bench Grinder



**D590**  
Medium-Duty Bench Drill - Belt Drive



**H820**  
Metric Hex Key Set with T-Bar Handle



**H821**  
Imperial Hex Key Set with T-Bar Handle



**H822**  
Torx® Key Set with T-Bar Handle



**D1272**  
Metric 135° Precision HSS Drill Set - 25 Piece



**D1282**  
Imperial 135° Precision HSS Drill Set - 29 Piece



**D1285**  
Metric 135° Precision HSS Drill Set - 51 Piece



**D1071**  
HSS Sheet Metal Step Drill Set - 3 Piece



Product Brochure For K035

**D1051**  
HSS Countersink Set (90° Cross Hole Type) - 4 Piece



**D1061**  
HSS Countersink Set (90° 3 Flute Type) - 6 Piece



**D508**  
HSS Industrial Centre Drill Set – 5Pcs



**D070**  
Drill Sharpener



**H880**  
Dead Blow, Nylon Face Hammer



**H870**  
Soft Face Hammer



**H875**  
Soft Face Hammer - 5 piece



**H885**  
Auto Panel Restoration Kit - DIY



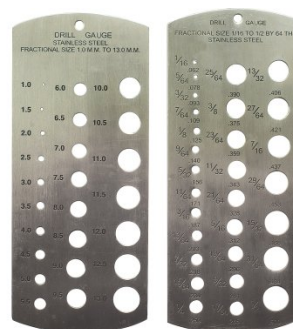
**H886**  
Auto Panel Restoration Kit - Professional



**H887**  
Auto Panel Restoration Kit - Master



**M988**  
Metric & Imperial Drill Gauge



**Q616**  
Feeler Gauge Set



Product Brochure For K035

**T012**  
Metric Alloy Steel Tap & Die Set  
- 32 Piece



**T013**  
Metric HSS Tap & Die Set - 32 Piece



**T014**  
Metric Alloy Steel Tap & Die Set  
- 45 Piece



**T015**  
Imperial Alloy Steel Tap & Die  
Set - 45 Piece



**T016**  
Metric HSS Tap & Die Set - 45 Piece



**T870**  
Screw Extractor Set - 10 piece  
Piece



**T100**  
Metric Thread Repair Kit - 130  
Piece



**D108**  
Metric Carbide Tipped Hole Saw  
Set



**D102**  
Metric HSS Hole Saw Set



**F100**  
Engineers Files, 5 Piece Set -  
Second Cut



**F120**  
Engineers File, Flat - Coarse  
Cut



**F121**  
Engineers File, Flat - Second  
Cut



Product Brochure For K035

---

**F122**  
Engineers File, Flat - Smooth  
Cut



**F124**  
Engineers File, Half Round -  
Coarse Cut



**F125**  
Engineers File, Half Round -  
Second Cut



**F126**  
Engineers File, Half Round -  
Smooth Cut



**F127**  
Engineers File, Round - Coarse  
Cut



**F128**  
Engineers File, Round - Second  
Cut



**F129**  
Engineers File, Round - Smooth  
Cut



**F160**  
Slapping File - Second Cut



**F150**  
Flexible Body File Holder



**F155**  
Flexible Body File



**F156**  
Flexible Body File



**P112**  
Hole Punch Set



Product Brochure For K035

**S203**  
180° Straight Edge/Seaming Plier



**S205**  
90° Edge/Seaming Plier



**S200**  
Joggler & Punch Plier



**P368**  
Automatic Centre Punch



**P367**  
Centre Punch Set - 3 Piece



**P365**  
Pin Punch Set - 6 Piece



**P363**  
Cold Chisel Set - 3 Piece



**P364**  
Punch & Cold Chisel Set - 14 Piece



**N001**  
Nut & Blind Riveter Set - 130 Piece



**P350**  
Letter Punches



**P351**  
Number Punches



**P354**  
Letter Punches



Product Brochure For K035

**P355**  
Number Punches



**W103**  
Engineers Chalk Marker- 50 Splits



**D063**  
Sheet Metal Deburring Tool



**D060**  
Deburring Tool - Telescopic Shaft



**D065**  
Universal Deburring Tool Set - 23 Piece



**D068**  
Pipe/Tube Deburring Tool - Internal / External



**B900**  
Carbide Burr Double Cut Set - Short Series



**B905**  
Carbide Burr Double Cut Set - Long Series



**M0010**  
Pick Up Tool with Magnetic Head & 1 x LED Light



**M0009**  
Magnetic Pick Up Tool & Inspection Mirror Set



**L300**  
Magnetic Swarf Remover



**P020**  
Hydraulic Chassis Punch Set



Product Brochure For K035

**W112**  
Micro Welding Steel Clamp Set



**W113**  
Butt Welding Aluminium & Steel Clamp Set



**S077**  
Drilling, Tapping & Cutting Tool Lubricant Spray - 400g



**O043**  
Rust & Corrosion Preventive



**O042**  
General Purpose Lubricant & Corrosion Inhibitor



**O044**  
Rust & Corrosion Preventive



**P030**  
Bush Driver Set - 17 piece



**P031**  
Bearing Race & Seal Driver Set - 10 piece



**P005**  
Ratcheting Gear Puller Set



**P013**  
Puller Set with Slide Hammer



**P011**  
Hydraulic Gear Puller Kit



**A037**  
Air Tool Oil

