

Product Brochure For K068

## 6 Drawer - Industrial Mobile Tooling Cabinet with Backing Panel Package Deal - TCW-954WP

723 x 653 x 1454mm  
100kg per Drawer



**On Sale - Package Deal**

Ex GST	Inc GST
\$1,208.00	\$1,389.20
<b>\$891.30</b>	<b>\$1,025.00</b>

**Package Contents - SAVE \$384.90 (Inc)**

1 x T767 - 6 Drawer - Industrial Tooling Cabinet TC-800	\$1,122.40
1 x T776 - Wheel Kit - Ø125mm WK-4	\$140.30
1 x T783 - Steel Frame Backing Panel BPF-723	\$112.70
1 x T779 - Handle HDL-723	\$34.50

**Normal Price (Inc): \$1,409.90**

ORDER CODE:	K068
MODEL:	TCW-954WP
Number of Drawers (No.):	6
Drawer Load Capacity (kg):	100
Maximum Total Load Capacity (kg):	390
Includes Backing Panel:	Yes
Dimensions (W x D x H) (mm):	723 x 653 x 1454
Nett Weight (kg):	123



### Features

- Steel top frame & backing panel - BPF-723
- 2 fixed & 2 swivel Ø125mm caster wheels
- Heavy duty tooling cabinets, ideal for industrial applications and serious workshops
- The sliding drawers are a welded strengthened single rail design coupled with high quality mechanical bearings for long lasting smooth operation
- Each drawer is rated at 100kg load capacity with 97% drawer access and a total of 390kg maximum load capacity
- Single Key lock design for safe storage. Each drawer has a mechanical safety lock which allows one drawer to be opened at a time, preventing the cabinet to tip over
- All top drawers include a series of different size plastic boxes for those small items, all other drawers come with adjustable steel dividers
- Includes steel frame backing panel with rubber protective base cover is great to rest tooling and precious parts on top of the cabinet

### Includes

- Steel top frame & backing panel - BPF-723
- Top Drawer - 75mm high with moveable plastic division boxes
- Drawer 2 - 75mm high with moveable steel dividers 4x3 layout
- Drawer 3 & 4 - 100mm high with moveable steel dividers 4x3 layout
- Drawer 5 - 150mm high with moveable steel dividers 4x3 layout
- Drawer 6 - 200mm high with moveable steel dividers 4x3 layout

Product Brochure For K068

**Specific Features**



Shown with Optional Tools



Shown with Optional Tools



Backing Panel



Tooling Cabinet



Top Drawer with Plastic Buckets



Drawers with Steel Dividers



Plastic Bucket Drawers



Heavy Duty Drawers



Drawer Locking Mechanism



Drawer Lock Bracket



Drawer in Lock Position



Drawer in Unlock Position



Heavy Duty Drawer Slides



Drawers with Safety Lock



2 x Fixed Wheels



2 x Brake Swivel Wheels

Product Brochure For K068



Heavy Duty Push Handle



Drawers with Steel Dividers



Heavy Duty Drawers with 100kg Load Capacity



Drawer Ball Bearing Arms



Top Drawer with Plastic Buckets



Show with Top Drawer Open

**Recommended Accessories**

T783

Steel Frame Backing Panel



T767

6 Drawer - Industrial Tooling Cabinet



T768

6 Drawer - Industrial Mobile Tooling Cabinet



T779

Handle



Product Brochure For K068

T776  
Wheel Kit - Ø125mm



A427  
Plastic Bucket



A428  
Plastic Bucket



A429  
Plastic Bucket



T784  
Steel Divider



T784A  
Slotted Rail



T786  
Steel Divider



T786A  
Slotted Rail



T787  
Steel Divider



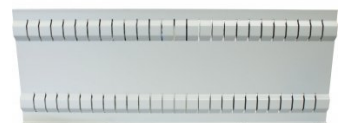
T787A  
Slotted Rail



T788  
Steel Divider



T788A  
Slotted Rail



Product Brochure For K068

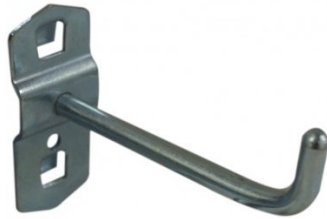
A439

Hook - Single Prong



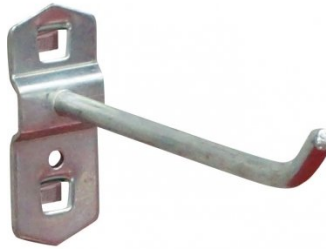
A440

Hook - Single Prong



A4401

Hook - Single Prong



A441

Hook - Double Prong



A442

Hook - Double Prong



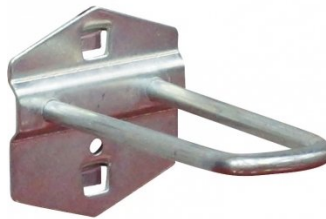
A4492

Hook - U Shape Holder



A449

Hook - U Shape Holder



A4496

Round Tool Holder - Loop



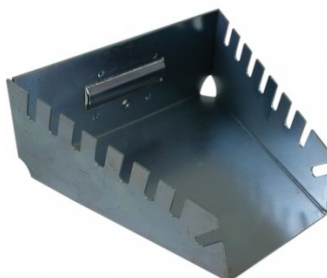
A444

Plier Holder - Triple Prong



A446

Holder - Spanner



A448

Holder - Screwdriver



T703

Magnetic Spray Can & Screwdriver Holder



Product Brochure For K068

**H820**  
Metric Hex Key Set with T-Bar Handle



**H821**  
Imperial Hex Key Set with T-Bar Handle



**H822**  
Torx® Key Set with T-Bar Handle



**D1272**  
Metric 135° Precision HSS Drill Set - 25 Piece



**D1282**  
Imperial 135° Precision HSS Drill Set - 29 Piece



**D1285**  
Metric 135° Precision HSS Drill Set - 51 Piece



**D1071**  
HSS Sheet Metal Step Drill Set - 3 Piece



**D1051**  
HSS Countersink Set (90° Cross Hole Type) - 4 Piece



**D1061**  
HSS Countersink Set (90° 3 Flute Type) - 6 Piece



**D508**  
HSS Industrial Centre Drill Set - 5Pcs



**D070**  
Drill Sharpener



**H880**  
Dead Blow, Nylon Face Hammer



Product Brochure For K068

**H870**  
Soft Face Hammer



**H875**  
Soft Face Hammer - 5 piece



**H885**  
Auto Panel Restoration Kit - DIY



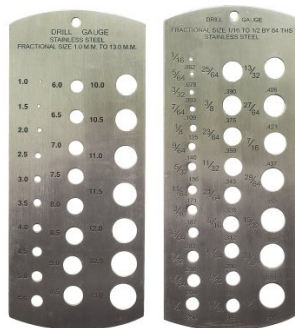
**H886**  
Auto Panel Restoration Kit - Professional



**H887**  
Auto Panel Restoration Kit - Master



**M988**  
Metric & Imperial Drill Gauge



**Q616**  
Feeler Gauge Set



**T012**  
Metric Alloy Steel Tap & Die Set - 32 Piece



**T013**  
Metric HSS Tap & Die Set - 32 Piece



**T014**  
Metric Alloy Steel Tap & Die Set - 45 Piece



**T015**  
Imperial Alloy Steel Tap & Die Set - 45 Piece



**T016**  
Metric HSS Tap & Die Set - 45 Piece



Product Brochure For K068

**T870**  
Screw Extractor Set - 10 piece



**T100**  
Metric Thread Repair Kit - 130 Piece



**D108**  
Metric Carbide Tipped Hole Saw Set



**D102**  
Metric HSS Hole Saw Set



**F100**  
Engineers Files, 5 Piece Set - Second Cut



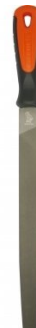
**F120**  
Engineers File, Flat - Coarse Cut



**F121**  
Engineers File, Flat - Second Cut



**F122**  
Engineers File, Flat - Smooth Cut



**F124**  
Engineers File, Half Round - Coarse Cut



**F125**  
Engineers File, Half Round - Second Cut



**F126**  
Engineers File, Half Round - Smooth Cut



**F127**  
Engineers File, Round - Coarse Cut



Product Brochure For K068

**F128**  
Engineers File, Round - Second Cut



**F129**  
Engineers File, Round - Smooth Cut



**F160**  
Slapping File - Second Cut



**F150**  
Flexible Body File Holder



**F155**  
Flexible Body File



**F156**  
Flexible Body File



**P112**  
Hole Punch Set



**S203**  
180° Straight Edge/Seaming Plier



**S205**  
90° Edge/Seaming Plier



**S200**  
Joggler & Punch Plier



**P368**  
Automatic Centre Punch



**P367**  
Centre Punch Set - 3 Piece



Product Brochure For K068

**P365**  
Pin Punch Set - 6 Piece



**P363**  
Cold Chisel Set - 3 Piece



**P364**  
Punch & Cold Chisel Set - 14 Piece



**N001**  
Nut & Blind Riveter Set - 130 Piece



**P350**  
Letter Punches



**P351**  
Number Punches



**P354**  
Letter Punches



**P355**  
Number Punches



**W103**  
Engineers Chalk Marker - 50 Splits



**D063**  
Sheet Metal Deburring Tool



**D060**  
Deburring Tool - Telescopic Shaft



**D065**  
Universal Deburring Tool Set - 23 Piece



Product Brochure For K068

**D068**  
Pipe/Tube Deburring Tool -  
Internal / External



**B900**  
Carbide Burr Double Cut Set -  
Short Series



**B905**  
Carbide Burr Double Cut Set -  
Long Series



**M0010**  
Pick Up Tool with Magnetic  
Head & 1 x LED Light



**M0009**  
Magnetic Pick Up Tool &  
Inspection Mirror Set



**L300**  
Magnetic Swarf Remover



**P020**  
Hydraulic Chassis Punch Set



**W112**  
Micro Welding Steel Clamp Set



**W113**  
Butt Welding Aluminium & Steel  
Clamp Set



**S077**  
Drilling, Tapping & Cutting Tool  
Lubricant Spray - 400g



**O043**  
Rust & Corrosion Preventive



**O042**  
General Purpose Lubricant &  
Corrosion Inhibitor



Product Brochure For K068

O044  
Rust & Corrosion Preventive



P030  
Bush Driver Set - 17 piece



P031  
Bearing Race & Seal Driver Set - 10 piece



P005  
Ratcheting Gear Puller Set



P013  
Puller Set with Slide Hammer



P011  
Hydraulic Gear Puller Kit



A037  
Air Tool Oil

