

Product Brochure For K1100

## MIG/STICK WELDER Package Deal - WT200MP

200 Amps Welding Current

**On Sale**

<b>Ex GST</b>	<b>Inc GST</b>
<del>\$1,100.00</del>	<del>\$1,265.00</del>
<b>\$890.43</b>	<b>\$1,024.00</b>



ORDER CODE:	K1100
MODEL:	WT200MP Package Deal ORDER CODE
Type:	MIG / STICK & Multifunction Welder
Part Number:	~
Voltage (V):	230
Recommended Plug Amperage (amp):	15
Welding Current Range - MIG (amp):	200
Welding Current Range - STICK (amp):	200
Welding Current Range - TIG (amp):	~
Duty Cycle (% @ amp):	60 @ 160
Wire Spool Size (kg):	15
Ferrous Wire Size - Range (mm):	~
Stainless Steel Wire Size - Range (mm):	~
Aluminium Wire Size - Range (mm):	~
Recommended Generator (KVA):	~
Dimensions (mm):	~
Nett Weight (kg):	26



### Description

Weldtech welder

### Features

- WT200MP - Inverter Multi-Function Welder - MIG-MMA: W1102
- 200 AMP GAS/GASLESS INVERTER MIG WELDER REVOLUTIONARY NEW PRODUCT!
- Weld like a pro in the workshop or on home projects with Powerful 200A MIG and ARC Welder
- Infinitely variable controls and IGBT Inverter technology make setup a breeze
- 15KG Spool Capable and optional spool gun means the WT200MP is extremely versatile, welding nearly all materials
- Lightweight and robust construction - only 13kg
- Inductance control
- 60% Duty cycle @ 160A
- 3m Euro connect torch with ARC and earth lead and regulator included
- Trade Quality
- 1 year Weldtech commercial warranty
  
- WTU-500 - Welder Trolley - Suits MIGS & TIGS: W241
- Portable on wheels (2 x fixed & 2 x swivel)
- 480 x 300mm top table plate for welder
- 650mm top table height
- 2 x shelves for welding accessories & consumables
- Includes 2 chains for securing gas bottle to rear of stand
  
- PROMAX 200 - Auto Darken Welding Helmet - 9~13 Shade: W001
- Suits Mig, Arc & Grinding
- Includes Enhanced Colour Recognition
- WHY CHOOSE PROMAX 200?
- > Affordable, reliable, & great value
- > Light weight & comfortable
- > Magnification lens holder
- > Grind-Mode, Locks the lens in light shade at the flick of a switch
- APPLICATION INFO:
- > Ideal for MIG & Stick Welding

## Product Brochure For K1100

- > For light to medium fabrication and occasional welding
  - Ideal for MIG & Stick Welding, for occasional welding
  - 96 x 39mm viewing area with ultra-clear optics & ECR (Enhanced Colour Recognition)
  - Fast & easy cover lens replacement
  - "Full Laminate" lens construction: Each layer in lens assembly is laminated for superior optical quality and reliability
  - Functions: Variable Shade 9-13, Sensitivity & Delay Adjustments, plus Grind-Mode switch (locks the lens in light shade)
  - Ultra clear vision
  - 'Hinge & Lock' Lens Retainer System = Easy cover lens replacement, Seals tightly against spatter to prevent damage to electronic lens
  - Magnification lens holder - takes standard magnification lenses
  - 'Full Laminate' Lens Construction: Each layer in the electronic lens assembly is firmly laminated for superior optical quality and long service life. This is in contrast to cheaper lenses which are simply glued on the edge and, over time, are prone to contamination and failure.
  - Lightweight, Durable and Shock Resistant shell
  - Switching speed: 1/30,000 (0.00003) sec
  - Auto-on & Auto-off = No buttons to press, Hassle-Free operation
  - Magnification lens holder accepts 108 x 51mm magnification lenses
  - 1 year / 12 month warranty
  - Includes 1 x Cover Lens - Inner 102 x 42mm & 1 x Cover Lens – Outer 115 x 104mm
- PROMAX BLUE - Welding Gloves - 400mm: W100
  - WHY USE WELDCLASS PROMAX BLUE WELDING GLOVES?
  - Crafted for Excellent Fit: Try a pair to experience the difference!
  - Top Quality: Premium cowhide leather, Reinforced, Sewn with Heat-Resistant Kevlar thread
  - Available in Standard Pairs
- APPLICATION INFO:
  - MIG & Stick Welding
  - Oxy Cutting & Heating
  - Plasma Cutting

### Includes

- 1 x WT200MP 230V Mig Welder (W1102)
- 1 x WTU-500 Welding Trolley (W241)
- 1 x Promax 200 Welding Helmet (W001)
- 1 x Kevlar Welding Gloves - 400mm (W100)

### Specific Features



Mig Welder WT200MP



WTU-500 - Welder Trolley



PROMAX 200 - Auto Darken Welding Helmet Front View



Side View



Top View



Rear View



Rear Side View Head Gear

Product Brochure For K1100



Harness Tightening knob



Electronic Shade Lens Sensor Controls



Front View of Electronic Shade lens



Inner-Outer Spare Cover Lens



Helmet Bag



Welders Gloves



Inner Hand



Close Up



Outer Hand

Product Brochure For K1100

**Recommended Accessories**

W1105N

Consumable Mig Welder Starter Pack



W10362

Magnetic MIG Torch Rest



O0181

MAP-PRO Gas Disposable Cylinder



O0182

O2 - Oxygen Disposable Cylinder



O352

Gas Refillable Cylinder



O354

Gas Refillable Cylinder



O360

Gas Refillable Cylinder



O362

Gas Refillable Cylinder



Product Brochure For K1100

O366  
Gas Refillable Cylinder



O368  
Gas Refillable Cylinder



W1140D  
Argon Gas Regulator-Twin Gauge



W001  
Auto Darken Welding Helmet - 9~13 Shade



W002  
Auto Darken Welding Helmet - 9~13 Shade



W1090  
Auto Darken Welding Helmet - 9 ~ 13 Shade



W1091  
Magnetic Swivel V-Pad Clamps



W1092  
Auto Darken Welding Helmet with PAPR Respiratory System - (2.5) 8 ~ 12 Shade



W100  
ROGUE™ Heavy Duty Welding Gloves - 400mm



W1140E  
Ø0.8mm Mild Steel MIG Welding Wire



W1140I  
Ø0.8mm Mild Steel MIG Welding Wire



W1140F  
Ø0.9mm Mild Steel MIG Welding Wire



Product Brochure For K1100

**W1140J**  
Ø0.9mm Mild Steel MIG  
Welding Wire



**W1140K**  
Ø1.0mm Mild Steel MIG  
Welding Wire



**W1140L**  
Ø1.2mm Mild Steel MIG  
Welding Wire



**W1140G**  
Ø0.8mm Gasless Mild Steel  
MIG Welding Wire



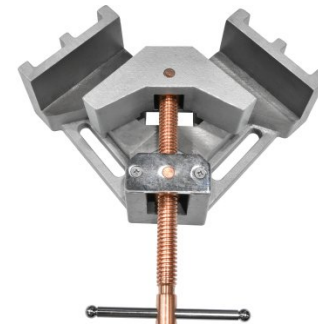
**W1140H**  
Ø0.9mm Gasless Mild Steel  
MIG Welding Wire



**V099**  
90 degree Angle Vice Clamp



**V100**  
90 degree Angle Vice Clamp



**W270**  
Welding Fume Extractor

