

Product Brochure For K232

Industrial Steel Shelving Plus Extension Package Deal - RSS-4WS

364kg Shelf Load Capacity
3878 x 610 x 1830mm



On Sale - Package Deal

Ex GST	Inc GST
\$610.00	\$701.50
\$500.00	\$575.00

Package Contents - SAVE \$211.60 (Inc)

1 x S014 - Industrial Steel Shelving RSS-4WS	\$407.10
1 x S014A - Industrial Steel Shelving Extension RSS-4WS	\$379.50

Normal Price (Inc): \$786.60

ORDER CODE:	K232
MODEL:	RSS-4WS + RSS-4WSA Package
Type:	Industrial Steel Shelving
Drawer Load Capacity (kg):	~
Shelf Load Capacity (kg):	364
Total Combined Load Capacity (kg):	~
Parts Bin Load Capacity Each (kg):	~
Buckets / Bins Total Quantity (No.):	~
Buckets / Bins Dividers Quantity (No.):	~
Maximum Total Load Capacity (kg):	~
Buckets / Bins A: Quantity / Size (mm):	~
Buckets / Bins B: Quantity / Size (mm):	~
Buckets / Bins C: Quantity / Size (mm):	~
Buckets / Bins D: Quantity / Size (mm):	~
Dimensions (W x D x H) (mm):	3878 x 610 x 1830
Nett Weight (kg):	103



Description

Industrial steel shelving which is supplied in bays 1955mm (L) x 610mm (W) x 1830mm (H) with a silver corrosive resistant powder coated finish.

Each bay consists of four levels with wire mesh inserts, each shelf has a capacity of 364kg. The vertical posts have provision to adapt an optional racking extensions (S014A) to double the storage. The shelf rails are secured in position and locked in via a wedge system. Simply very easy to assemble without the use of any tools.

Features

- RSS-4WS - Industrial Steel Shelving - (S014)
- 364kg capacity per shelf
- Industrial 4 shelves with reinforced steel wire grid pattern mesh
- Adjustable shelf height position with interlocking tabs
- Silver corrosive resistant powder coated finish
- Vertical posts have double sided punched holes to connect optional extension bay
- Vertical posts are 64 x 38 x 1.6mm heavy duty C-section
- Cross member supports for wire mesh are 70 x 18 x 1.6mm heavy duty C-section
- Strengthening side supports are 40 x 18 x 1.4mm C-section
- 1955 x 610 x 1830mm (LxWxH) assembled dimensions
- RSS-4WSA - Industrial Steel Shelving Extension - (S014A)
- 364kg per shelf capacity when attached to RSS-4WS shelving
- Industrial 4 shelves with reinforced steel wire grid pattern mesh
- Adjustable shelf height position with interlocking tabs
- Silver corrosive resistant powder coated finish
- Vertical post has double sided punched holes to connect optional extension bay
- Vertical post is 64 x 38 x 1.6mm heavy duty C-section
- Cross member supports for wire mesh are 70 x 18 x 1.6mm heavy duty C-section
- Strengthening side supports are 40 x 18 x 1.4mm C-section
- 1923 x 610 x 1830mm (LxWxH) assembled dimensions

Product Brochure For K232

Specific Features



RSS-4WS Industrial Shelving



RSS-4WSA - Industrial Steel Shelving Extension



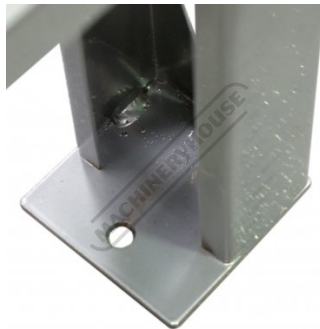
External Shelf Locking System



Internal Shelf Locking Wedge Type System



Shelf Wire Mesh



Foot Post with Bolt Down Provisions

Recommended Accessories

S014A

Industrial Steel Shelving Extension

S014D

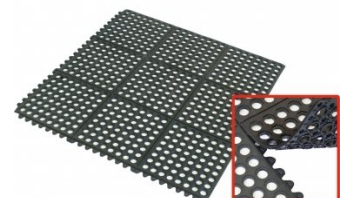
2 x Drawer System - Suits Industrial Steel Shelving

M800

Rubber Mat - Anti-Fatigue

M805

Rubber Mat - Anti-Fatigue



Product Brochure For K232

A380
Steel Work Bench - 3 x Lockable
Drawers



A420
Industrial Work Bench



A426
Industrial Backing Panel - Bench
Mount



T790
Steel Divider



T774
Industrial Storage Cabinet



T775
6 Drawer - Industrial Tooling
Cabinet



T762
Industrial Storage Cupboard



T764
6 Drawer - Industrial Tooling
Cabinet

