

Product Brochure For L0517

## KYOCERA Carbide Inserts - Turning - SNMG120404HQ

Grade CA125P - Roughing  
10 Inserts Per Pack

**On Sale**

Ex GST	Inc GST
<del>\$196.00</del>	<del>\$225.40</del>
<b>\$155.65</b>	<b>\$179.00</b>



ORDER CODE:	L0517
MODEL:	SNMG120404HQ
Grade:	CA125P
Application:	Roughing
Pieces in Set (No.):	10
I.C. (mm):	12.7
Thickness (S) (mm):	4.76
Hole Diameter Ø (D1) (mm):	5.16
Corner Radius (RE) (mm):	0.4
Relief Angle (Deg):	~
d (mm):	~
Insert shape:	~
Use Classification:	~
Clearance Angle:	~

**KYOCERA**  
JAPANESE CARBIDE



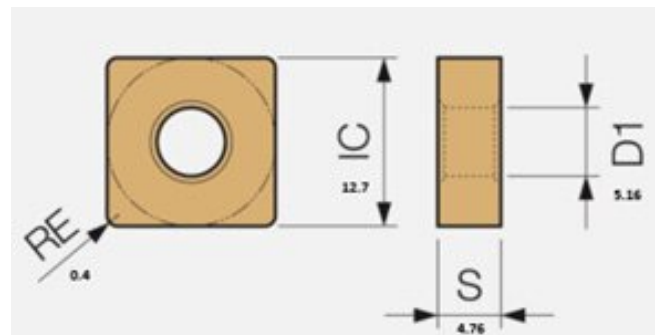
### Description

CA125P Grade CVD Coated Carbide for Steel  
Suitable for continuous to heavy interrupted machining, these inserts are designed for general-purpose applications.

HQ Chipbreaker  
General purpose chipbreaker for medium machining.

### Features

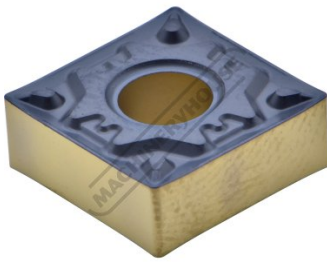
- Japanese Made
- CVD Coated Carbide with Thin Ultra-fine TiCN Coating
- 10 Inserts Per Pack



Product Brochure For L0517

---

**Specific Features**



Tip



Tip Top View

**Recommended Accessories**

**L4054**

45° Square / Negative - Right  
Hand Turning Tool Holder

**L4056**

45° Square / Negative - Right  
Hand Turning Tool Holder

