

Product Brochure For L0521

35° Rhombic Positive Turning Insert - VCMT160404HQ

Grade CA125P - General Purpose Steel
10 Inserts Per Pack

On Sale

Ex GST	Inc GST
\$230.00	\$264.50
\$178.26	\$205.00



ORDER CODE:	L0521
MODEL:	VCMT160404HQ
Grade:	CA125P
Application:	General Purpose Steel
Pieces in Set (No.):	10
I.C. (mm):	9.53
Thickness (S) (mm):	4.76
Hole Diameter Ø (D1) (mm):	4.4
Corner Radius (RE) (mm):	0.4
Relief Angle (Deg):	7°
d (mm):	~
Insert shape:	~
Use Classification:	~
Clearance Angle:	~

KYOCERA
JAPANESE CARBIDE



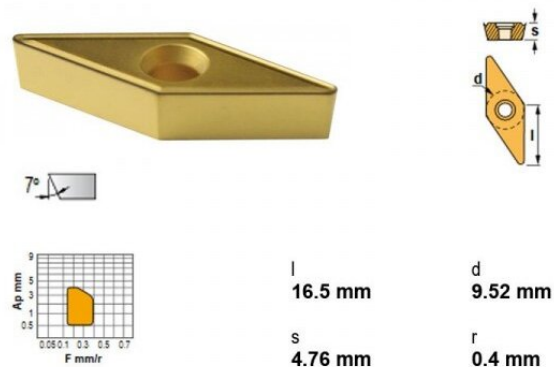
Description

CA125P Grade CVD Coated Carbide for Steel
Suitable for continuous to heavy interrupted machining, these inserts are designed for general-purpose applications.

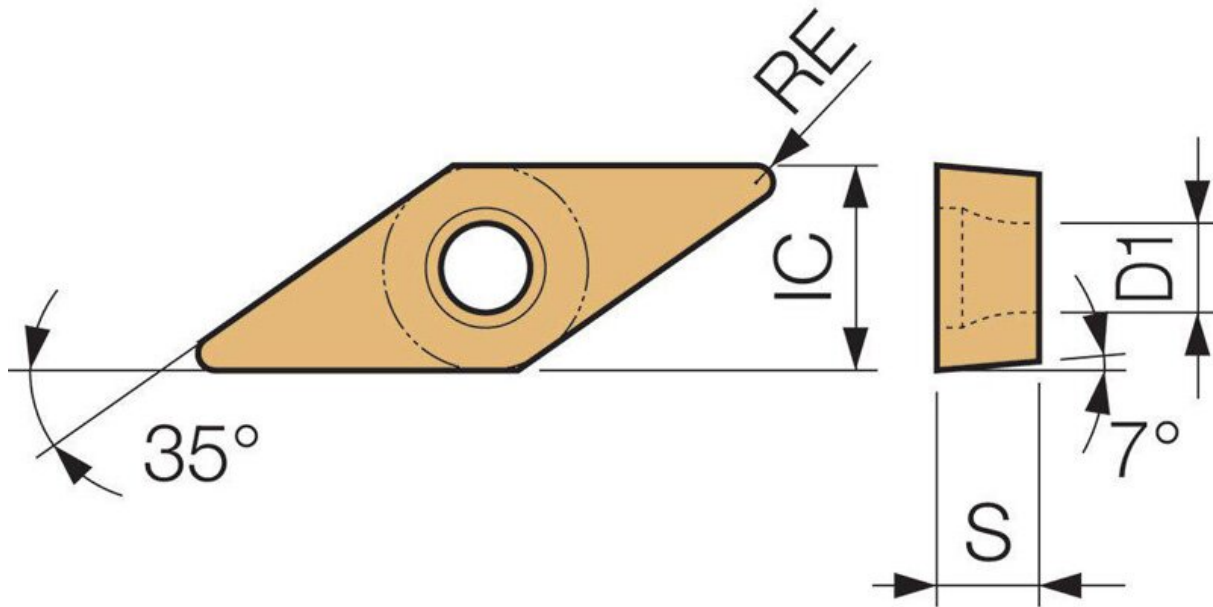
HQ Chipbreaker
General purpose chipbreaker for medium machining.

Features

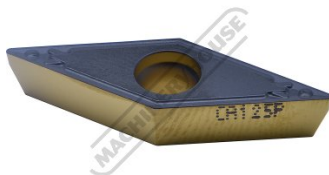
- Japanese Made
- CVD Coated Carbide with Thin Ultra-fine TiCN Coating
- 10 Inserts Per Pack



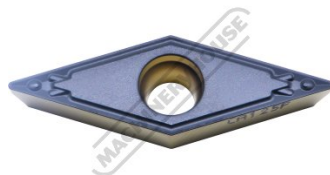
Product Brochure For L0521



Specific Features



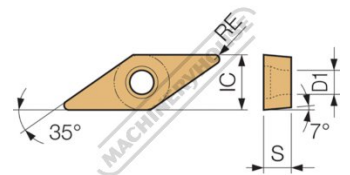
Side View



Top View



Bottom View



Diagram

Product Brochure For L0521

Recommended Accessories

L4062

93° Rhombic / Positive - Right
Hand Turning Tool Holder

L4064

93° Rhombic / Positive - Right
Hand Turning Tool Holder

