

Product Brochure For L053

KYOCERA Carbide Inserts - Turning - WNMG 080408PMG

Grade CA125P - General Purpose Steel
10 Inserts Per Pack

On Sale

Ex GST	Inc GST
\$158.00	\$181.70
\$126.09	\$145.00



ORDER CODE:	L053
MODEL:	WNMG 080408PS
Grade:	CA125P
Application:	General Purpose Steel
Pieces in Set (No.):	10
I.C. (mm):	8.7
Thickness (S) (mm):	4.76
Hole Diameter Ø (D1) (mm):	5.16
Corner Radius (RE) (mm):	0.8
Relief Angle (Deg):	~
d (mm):	12.7
Insert shape:	~
Use Classification:	~
Clearance Angle:	~

KYOCERA
JAPANESE CARBIDE



Description

CA125P Grade CVD Coated Carbide for Steel
Suitable for continuous to heavy interrupted machining, these inserts are designed for general-purpose applications.

PMG Chipbreaker

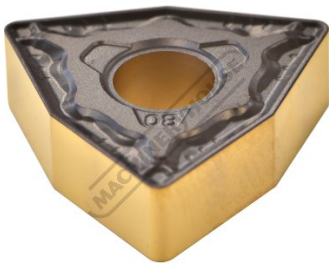
Covers a wide range of machining applications from medium machining to roughing.
Excellent wear resistance with low cutting force design. Reduces chip shape inconsistencies and improves tool life.

Features

- Japanese Made
- CVD Coated Carbide with Thin Ultra-fine TiCN Coating
- 10 Inserts Per Pack

Product Brochure For L053

Specific Features



Tip

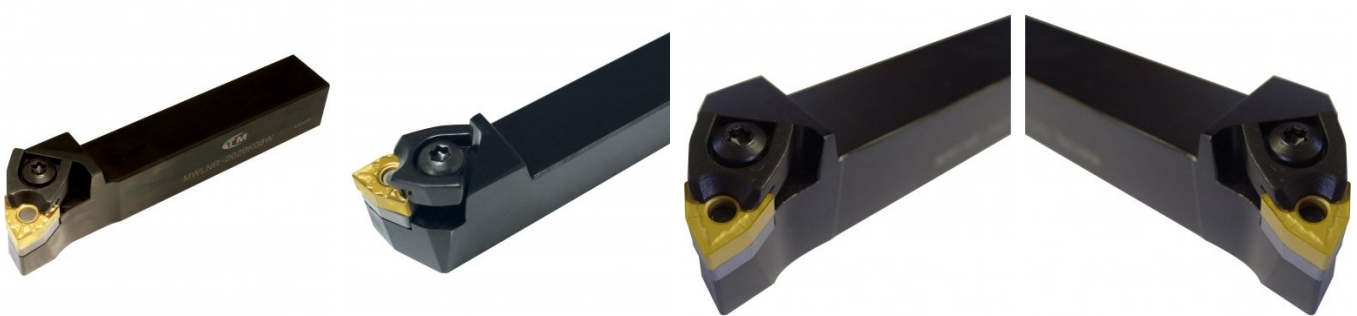
Recommended Accessories

L039
Right Hand Turning Tool Holder

L040
Left Hand Turning Tool Holder

L041
Right Hand Turning Tool Holder

L042
Left Hand Turning Tool Holder



L415
Right Hand Boring Bar

L416
Right Hand Boring Bar

L452
Lathe Turning Tool Kit - 3 piece
Insert Type

L453
Lathe Turning Tool Kit - 3 piece
Insert Type

