

Product Brochure For L0534

## KYOCERA Carbide Inserts - Turning - WNMG 080404PMG

Grade CA115P - Finishing Steel  
10 Inserts Per Pack

**On Sale**

Ex GST	Inc GST
<del>\$170.00</del>	<del>\$195.50</del>
<b>\$135.65</b>	<b>\$156.00</b>



ORDER CODE:	L0534
MODEL:	WNMG 080404HQ
Grade:	CA115P
Application:	Finishing Steel
Pieces in Set (No.):	10
I.C. (mm):	8.7
Thickness (S) (mm):	4.76
Hole Diameter Ø (D1) (mm):	5.16
Corner Radius (RE) (mm):	0.4
Relief Angle (Deg):	~
d (mm):	12.7
Insert shape:	~
Use Classification:	~
Clearance Angle:	~

**KYOCERA**  
JAPANESE CARBIDE



### Description

CA115P Grade CVD Coated Carbide for Steel  
Suitable for continuous to light interrupted machining, these inserts are designed for highly-efficient applications.

PMG Chipbreaker

Covers a wide range of machining applications from medium machining to roughing.  
Excellent wear resistance with low cutting force design. Reduces chip shape inconsistencies and improves tool life.

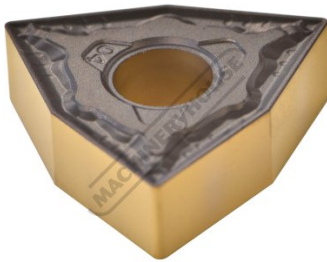
### Features

- Japanese Made
- CVD Coated Carbide with Thin Ultra-fine TiCN Coating
- 10 Inserts Per Pack

Product Brochure For L0534

---

**Specific Features**



Tip

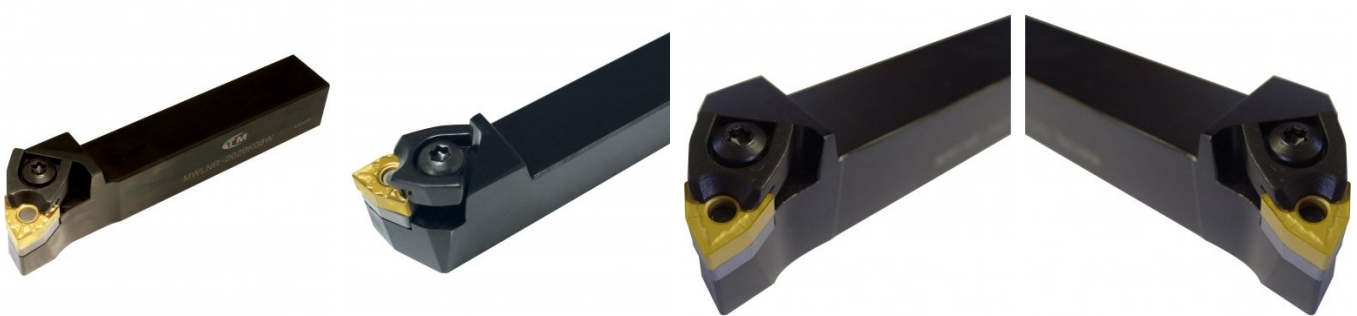
**Recommended Accessories**

L039  
Right Hand Turning Tool Holder

L040  
Left Hand Turning Tool Holder

L041  
Right Hand Turning Tool Holder

L042  
Left Hand Turning Tool Holder



L415  
Right Hand Boring Bar

L416  
Right Hand Boring Bar

