

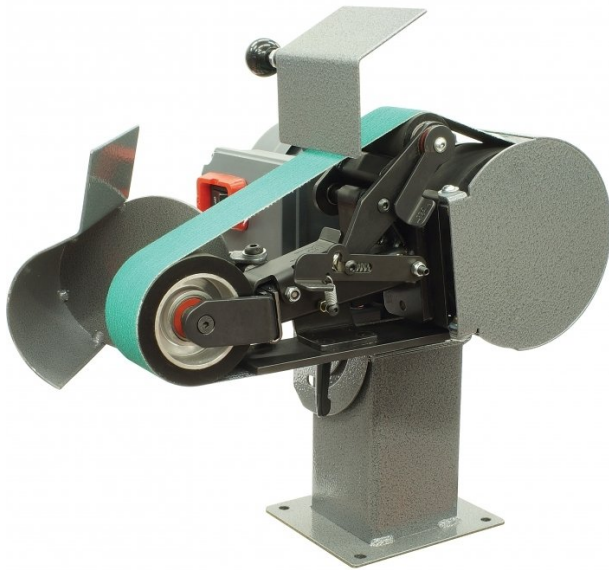
## Product Brochure For L0995

# Blade Master Bench Belt Grinder / Linisher - BM362

50 x 915mm Belt Size  
5 Work Stations

**On Sale**

Ex GST	Inc GST
<del>\$2,160.00</del>	<del>\$2,484.00</del>
<b>\$2,000.00</b>	<b>\$2,300.00</b>



ORDER CODE:	L0995
MODEL:	BM362
Type:	Belt Grinder / Linisher
Mounting Type - Bench / Pedestal:	Bench
Includes Stand:	~
Belt Size (mm):	50 x 915
Belt Speed (fpm / mpm):	4320 / 1316
Motor Speed (rpm):	2800
Motor Power (kW / hp):	0.75 / 1
Voltage / Amperage (V / amp):	240 / 10
Nett Weight (kg):	50



## Description

The Best Knife Making Machines & Belt Grinding Machines In The World

Blade Master BM362 has many user friendly features that set it apart. No time is lost in dismantling and changing accessories. In the case of semi-production work, time saved can be hours per day. The guards covering the contact wheels are easy to engage and disengage. The handle position can be adjusted on all clamp levers. The ease of selection, belt change, belt tracking and its versatility make using this machine a pleasant hands-on experience.

Blade Master patented wheel cartridge lock is so efficient it can support a 203mm (8"  $\varnothing$ ) contact wheel. The addition of this contact wheel steps it up to the next popular belt size of 1220 x 50 (48" x2"). This provides exceptional flat grinding & hollow grinding performance essential for custom knife making.

Radius Master has proven an invaluable aid by engineers, fabricators, welders, fitters, balustrade and stainless specialists, foundries, toolmakers, rural manufacturers, mechanics, restorers, aircraft engineers, medical equipment manufacturers, sculptors, knife makers, model makers, many universities and the CSIRO

## Features

- 5 work stations for rapid metal removal
- Quick change belt & wheel system
- 50 x 915mm belt (6 sec belt change)
- 4320fpm, 1316mpm belt speed
- Exceptional performance at moderate cost.
- Out performs other grinders with twice the belt length.
- Blade Master patented wheel cartridge lock is so efficient it can support a 203 (8")  $\varnothing$  contact wheel.
- The addition of this contact wheel steps it up to the next popular belt size of 1220 x 50 (48" x2")
- This provides exceptional flat grinding & hollow grinding performance essential for custom knife making.
- 5 work stations for rapid metal removal
- Head tilts to 90 degrees and rotates in 3 positions
- Performance and durability backed by a 2 year commercial warranty
- 240V 0.75kW motor totally enclosed with overload protection
- Made in Australia

## Includes

- Tilting top bench mount
- Tool rest

## Product Brochure For L0995

- 1 x zirconia belt
- 2 contact wheels (Ø50 & Ø89mm)

### Optional Accessories

- Contact wheels available:
  - Ø19, Ø25, Ø32, Ø38, Ø44, 203mm
  - Steel platen table
  - Steel notching table
  - Tilt top floor stand
  - Tool rest for Ø203mm wheel
  - Mobile base board on wheels
- Please note:  
• Ø203mm contact wheel requires 50 x 1220mm belt)

### Specific Features



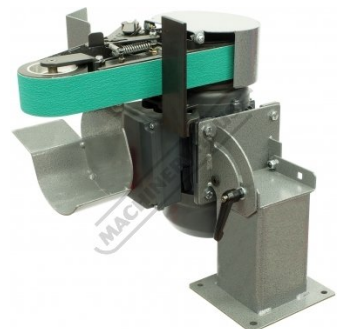
Guards In Place



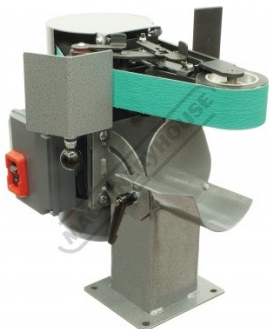
Vertical Position



Vertical Position with Tilted Table



Head Tilted



Head Tilted and Rotated



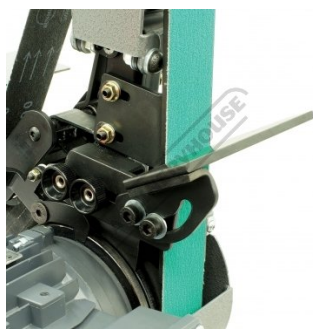
Head Tilted Front View



Platen Table



Platen Table Tilted Down



Platen Table Tilted Up



Contact Wheel Removal



Contact Wheel Locked and Engaged

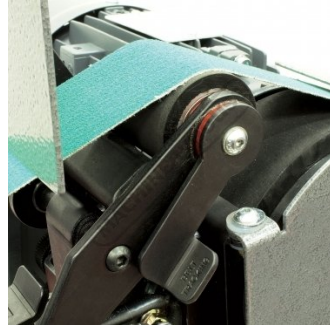


Head Tilt Hand Lever Lock

Product Brochure For L0995



On Off Switch



Belt Tracking Lever



Belt Release Lever



Depressing Belt Tensioner



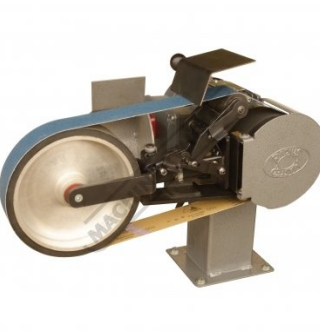
Remove and Replace Belt



Releasing Belt Tensioner



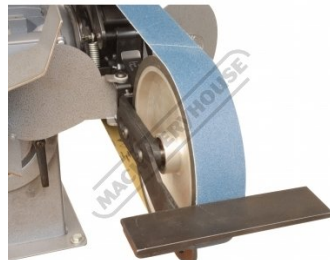
Included Belt, Ø50 & Ø89mm Contact Wheels



Optional 203mm Contact Wheel



Optional Notching Table



Optional Tool Rest to Suit 203mm Wheel

Product Brochure For L0995

---

**Recommended Accessories**

L0995A

Contact Wheel Cartridge -  
Ø19mm



L0995B

Contact Wheel Cartridge -  
Ø25mm



L0995C

Contact Wheel Cartridge -  
Ø32mm



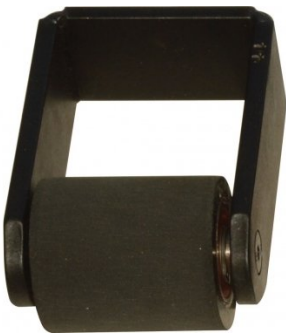
L0995D

Contact Wheel Cartridge -  
Ø38mm



L0995E

Contact Wheel Cartridge -  
Ø44mm



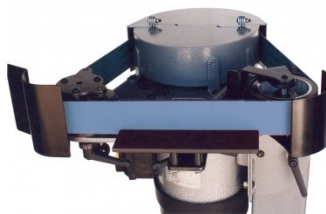
L0995F

Contact Wheel Cartridge -  
Ø203mm



L0995H

Platen Table



L0995G

Notching Table



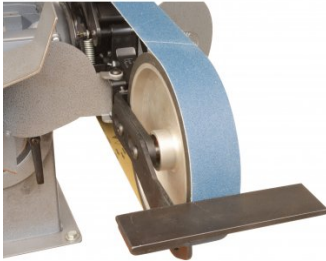
Product Brochure For L0995

L0995I  
Tool Rest Table

A8000  
40G Aluminium Oxide Linishing  
Belt Pack

A8001  
60G Aluminium Oxide Linishing  
Belt Pack

A8002  
80G Aluminium Oxide Linishing  
Belt Pack

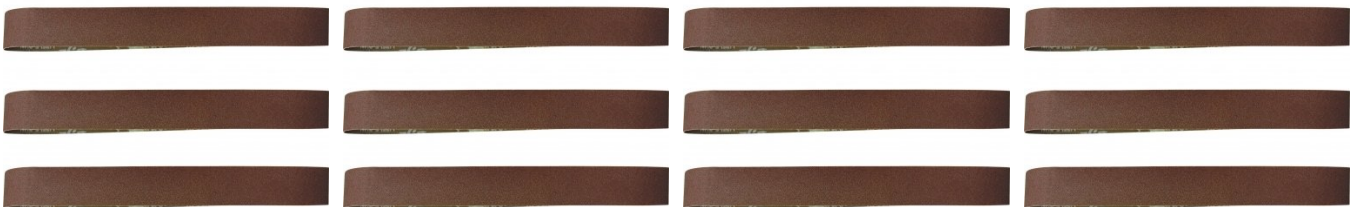


A8003  
100G Aluminium Oxide Linishing  
Belt Pack

A8004  
120G Aluminium Oxide Linishing  
Belt Pack

A8005  
240G Aluminium Oxide Linishing  
Belt Pack

A8006  
400G Aluminium Oxide Linishing  
Belt Pack



A8009  
40G Zirconia Linishing Belt Pack

A8010  
60G Zirconia Linishing Belt Pack

A8011  
80G Zirconia Linishing Belt Pack

A8012  
100G Zirconia Linishing Belt  
Pack



Product Brochure For L0995

**A8013**  
120G Zirconia Linishing Belt  
Pack



**A36200**  
Scotch Belt Linishing Belt -  
Coarse Brown



**A36201**  
Scotch Belt Linishing Belt -  
Medium Red



**A36202**  
Scotch Belt Linishing Belt - Fine  
Blue



**L098**  
Base Board on Wheels



**G183**  
Abrasive Belt & Disc Cleaning  
Stick



**W322A**  
Flame Retardant Dust Hose -  
Metal or Timber

