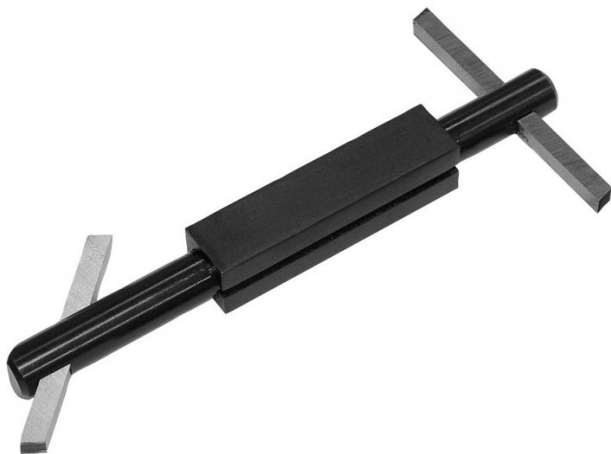


Product Brochure For L103

Boring Bar with Holder

5/16"

HSS bit not included

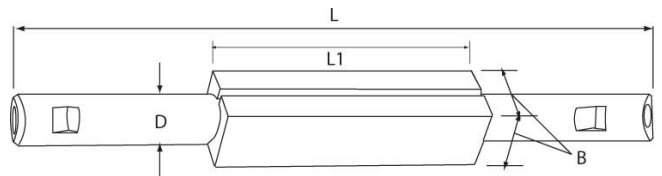


On Sale

Ex GST
~~\$44.00~~
\$35.65

Inc GST
~~\$50.60~~
\$41.00

ORDER CODE:	L103
B:	1"
D:	3/4"
L:	9"
L1:	3-3/4"
Toolbit Required:	5/16" (L0004)
Nett Weight (kg):	0.55



Description

NOTE: HSS Tool bits not supplies
Use 5/16" HSS Tool Bit (L0004)

Features

- Double-ended bars with 45° and 90° angular square holes at either end
- Accurately broached square holes to accept standard high speed steel or carbide tool bits
- Supplied fitted with screws and allen key

Product Brochure For L103

Recommended Accessories

L0004
High Speed Steel Bits - Pack of 3



L100
Boring Bar with Holder



L101
Boring Bar with Holder



L102
Boring Bar with Holder



L104
Boring Bar with Holder



L006A
Boring Bar Set - HSS



L431
Boring Bar Set - Carbide Insert



L430
Boring Bar Set - Carbide Insert



Product Brochure For L103

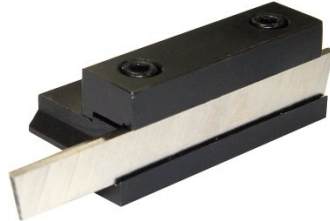
L073

Parting Tool Holder - Suits 1/2"
HSS Tool Bit



L074

Parting Tool Holder - Suits 1/2"
HSS Tool Bit



L070L

Left Hand Lathe Turning Tool
Holder - American Style



L070R

Right Hand Lathe Turning Tool
Holder - American Style



L070S

Straight Lathe Turning Tool
Holder - American Style

