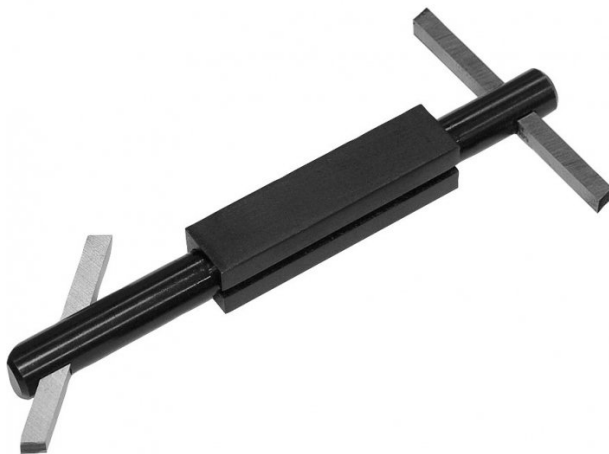


Product Brochure For L104

Boring Bar with Holder

3/8"
HSS bit not included

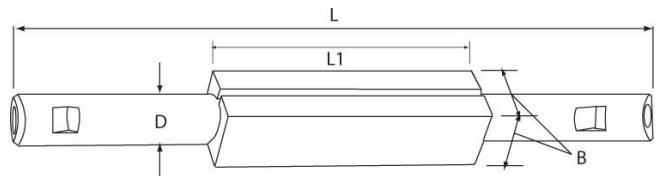


On Sale

Ex GST
~~\$50.00~~
\$38.26

Inc GST
~~\$57.50~~
\$44.00

ORDER CODE:	L104
B:	1-1/4"
D:	15/16"
L:	11-1/2"
L1:	4-1/2"
Toolbit Required:	3/8" (L0005)
Nett Weight (kg):	0.75



Description

NOTE: HSS Tool bits not supplied
Use 3/8" HSS Tool Bit (L0005)

Features

- Double-ended bars with 45° and 90° angular square holes at either end
- Accurately broached square holes to accept standard high speed steel or carbide tool bits
- Supplied fitted with screws and allen key

Product Brochure For L104

Recommended Accessories

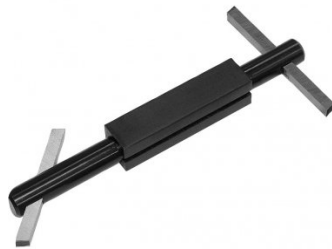
L0005

High Speed Steel Bits - Pack of 2



L100

Boring Bar with Holder



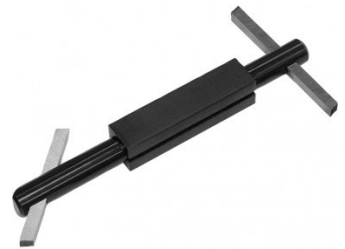
L101

Boring Bar with Holder



L102

Boring Bar with Holder



L103

Boring Bar with Holder



L006A

Boring Bar Set - HSS



L431

Boring Bar Set - Carbide Insert



L430

Boring Bar Set - Carbide Insert



Product Brochure For L104

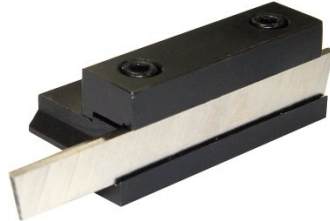
L073

Parting Tool Holder - Suits 1/2"
HSS Tool Bit



L074

Parting Tool Holder - Suits 1/2"
HSS Tool Bit



L070L

Left Hand Lathe Turning Tool
Holder - American Style



L070R

Right Hand Lathe Turning Tool
Holder - American Style



L070S

Straight Lathe Turning Tool
Holder - American Style

