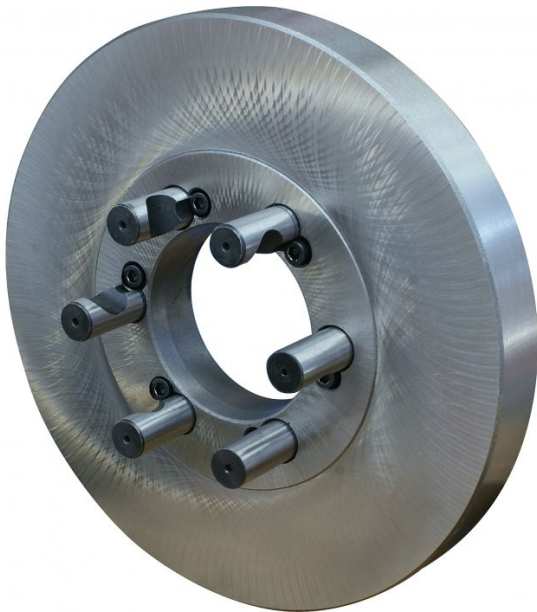


Product Brochure For L286

## D1-8 Camlock Back Plate

Ø325mm



**On Sale**

Ex GST	Inc GST
<del>\$354.00</del>	<del>\$407.10</del>
<b>\$283.48</b>	<b>\$326.00</b>

ORDER CODE:	L286
Camlock:	D1-8
Flange Diameter (mm):	Ø325
Bore (mm):	Ø136
Nett Weight (kg):	26



### Description

Cast iron back plate finished machined on one side to fit D1-8 spindle nose. The other face and outside diameter need to be machined to suit chuck size.