

Product Brochure For L467

Professional Lathe Parting Tool Kit - Insert Type

25mm Tool Height

On Sale

Ex GST	Inc GST
\$404.00	\$464.60
\$322.61	\$371.00



ORDER CODE:	L467
Type:	Professional
Tool Centre Height (mm):	25
Blade Size (mm):	32 x 3
Insert Width (mm):	3
Nett Weight (kg):	2.0



Description

Professional kit for the toolroom and workshop application
Kit consists of a block, blade & Kennametal inserts.

Features

- Blades have top and bottom V-prism design enabling greater clamping force preventing insert movement, even when cutting at high feed rates

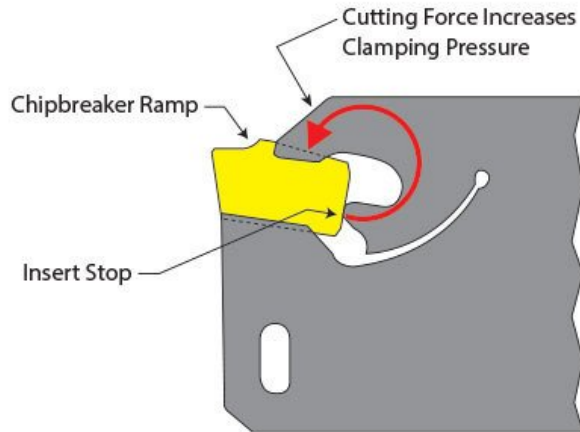
Includes

- 1 x 25mm Parting block suits 32mm blade height
- 1 x 32 x 3mm Parting blade
- 10 x 3mm Parting inserts
- 1 x Key insert remover
- 1 x Hex key

Product Brochure For L467

Insert Stop Design

- Clamping pressure is increased when cutting forces increase providing secure holding power.
- The fixed insert stop provides solid seating with every index and provides up to 30% longer life.



TECHNICAL INFORMATION

SETTING THE SPINDLE SPEED

To calculate the correct speed the following formula can be used.

$$\text{RPM} = \frac{1000 \times \text{Surface speed in Metres per Minute (M/min)}}{3.14 \times \text{Work Piece Diameter (mm)}}$$

Example 1.

20mm Mild Steel bar to be parted off.

$$\text{RPM} = \frac{1000 \times 80}{3.14 \times 20\text{mm}} = \frac{80000}{62.8} = 1273\text{rpm}$$

Example 2.

20mm Aluminium bar to be parted off.

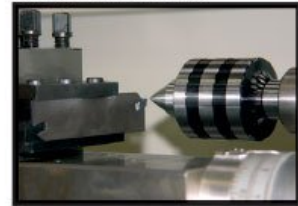
$$\text{RPM} = \frac{1000 \times 100}{3.14 \times 20\text{mm}} = \frac{100000}{62.8} = 1592\text{rpm}$$

- Set the spindle speed to the closest RPM speed calculated
- If in doubt then set a speed slower than the calculated speed

SETTING THE TOOL ON CENTRE

For the tool to cut correctly it needs to be set on centre. This can be best achieved by placing a centre in the tailstock and adjusting the tool height to line up with centre point.

Correct Centre Height



Approximate surface speeds for carbide tools

Material	Parting Off
Mild Steel	80 M/min
Cast Iron	70 M/min
Aluminium	100 M/min
Stainless Steel	60 M/min

Product Brochure For L467

Specific Features

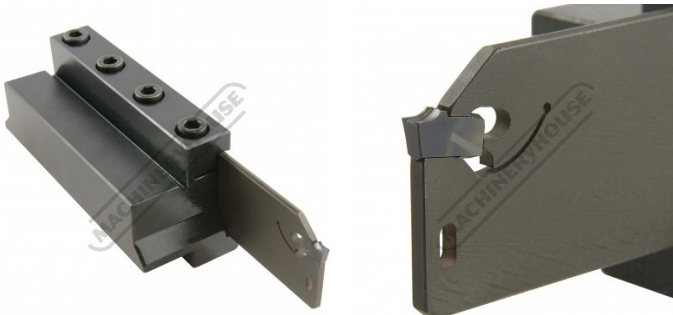


Front View

Front Rear View

Rear View

Bottom View



Rear Top View

Tip Close Up

Recommended Accessories

L030
Parting Block - Suits 32mm
Blade

L4693
Parting Blade

L0513
KENNAMETAL Carbide Inserts -
Parting

L464
Professional Lathe Parting Tool
Kit - Insert Type



Product Brochure For L467

L465
Professional Lathe Parting Tool Kit - Insert Type



L466
Professional Lathe Parting Tool Kit - Insert Type



L072
HSS Turning Tool Set - 4 piece



L0085
Carbide Turning Tool Set - 11 piece



L0055
Lathe Turning Tool Kit - 5 piece Insert Type



L0099
Lathe Turning Tool Kit - 7 piece Insert Type



L0077
Lathe Turning Tool Kit - 7 piece Insert Type



L450
Lathe Turning Tool Kit - 3 piece Insert Type



L451
Lathe Turning Tool Kit - 3 piece Insert Type



L452
Lathe Turning Tool Kit - 3 piece Insert Type



L453
Lathe Turning Tool Kit - 3 piece Insert Type



L456
Lathe Threading Tool Kit - Insert Type



Product Brochure For L467

L457

Lathe Threading Tool Kit - Insert Type



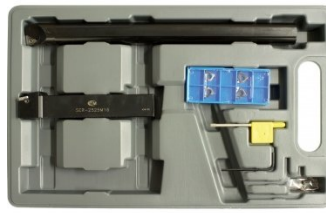
L458

Lathe Threading Tool Kit - Insert Type



L459

Lathe Threading Tool Kit - Insert Type



L006A

Boring Bar Set - HSS



L431

Boring Bar Set - Carbide Insert



L430

Boring Bar Set - Carbide Insert

