

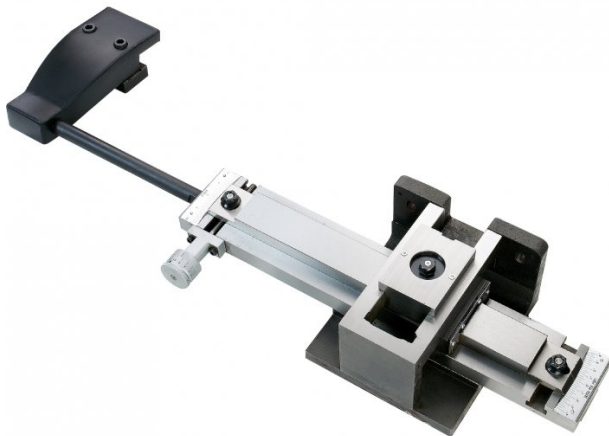
Product Brochure For L634T

Taper Turning Attachment - TPA-1500

Suit TM-1740G & TM-1960G Centre Lathes
±8° x 300mm Taper Length

On Sale - Back In Stock Soon

Ex GST	Inc GST
\$3,648.00	\$4,195.20
\$3,300.00	\$3,795.00



ORDER CODE:	L634T
MODEL:	TPA-1500
Taper Travel (mm):	200
Suits Lathes:	TM-1740G & TM-1960G
Nett Weight (kg):	48



Description

Suits TM-1740G & TM-19600G Centre Lathes

Features

- 200mm taper turning travel
- ±8° adjustable taper in 1° increments
- Dial wheel for fine taper adjustments
- Comes with mounting brackets, swarf cover & stops
- Weight: 48kg

Product Brochure For L634T

Recommended Accessories

L632D
Centre Lathe

L634D
Centre Lathe

