

Product Brochure For L805

Ball Transfer Conveyor - BTT-450

450 x 1500mm

Load Capacity 300Kg

On Sale

Ex GST

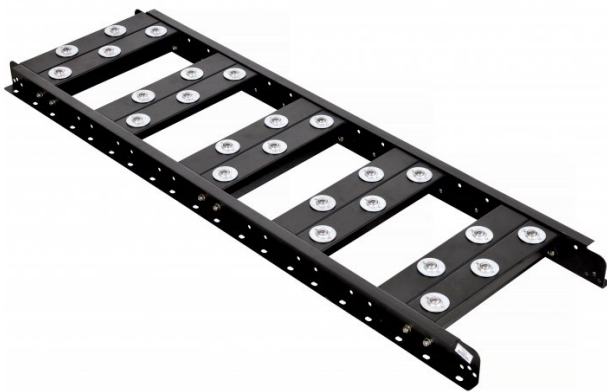
\$270.00

\$195.65

Inc GST

\$310.50

\$225.00



ORDER CODE:	L805
MODEL:	BTT-450
Roller Width (mm):	~
Roller Pitch (mm):	~
No. Rollers (No.):	25
Roller Diameter (mm):	Ø50
Frame Length (L) (mm):	1500
Frame Width (W) (mm):	450
Frame Height (H) (mm):	~
Height Adjustment (mm):	~
Load Capacity with 2 x Support Legs (kg):	300
Load Capacity with 3 x Support Legs (kg):	~



Description

The BTT-450 ball transfer table is commonly used in the sheet metal & fabrication industries on Pressbrakes, Panbrakes, Guillotines, Plate Rolling Machines, Punch & Shearing Machines along with anywhere addition material support is needed. The roller panel inserts are modular & can be mounted at different areas of the frame depending on the support needed, with the addition of optional panels you can modify the set-up of this conveyor to suit your needs. Add on the optional adjustable legs to allow it be positioned at the correct height needed to suit just about any application.

Features

- Modular designed transfer panels
- Powder coated steel frame & inserts
- Frame is pre-drilled @ 75mm hole centres for easy movement of the transfer panels
- Optional transfer panels available

Includes

- 5 sets of 390 x 150mm transfer panels with 5 balls in each
- Powder coated steel frame
- Includes connecting hooks & bolts to be able to join sections

Optional Accessories

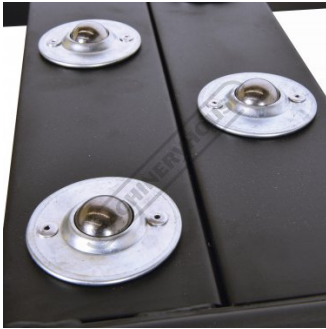
- RS-450H - Roller Conveyor Stand (L820)
- RS-450L - Roller Conveyor Stand (L822)

Product Brochure For L805



Product Brochure For L805

Specific Features



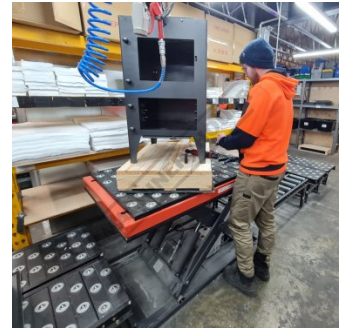
Steel Transfer Balls



Adjustable Slide Positions



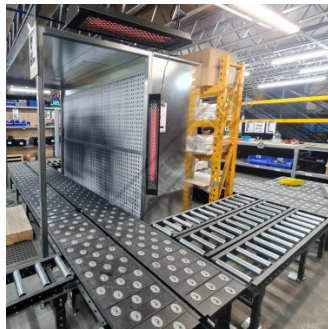
Shown With Optional Stand



Assembly Line Use



Assembly Line process



Multiple Setup

Recommended Accessories

L820
Roller Conveyor Stand

L822
Roller Conveyor Stand

L805A
Ball Transfer Insert Panel

W343A
Roller Stand



Product Brochure For L805

W343
Roller Stand



W3434
Roller Stand



W3436
Roller Stand - V-Type

