

Product Brochure For M150A

Mini Mill Drill - Tilting Head - HM-10L (SIEG X2L)

Table Travel: (X) - 300mm (Y) - 130mm (Z) - 180mm

Dovetail Vertical Column



ORDER CODE:	M150A
MODEL:	HM-10L (X2L)
Digital Readout:	Optional
Type:	Vertical
Table Size (mm):	460 x 120
Column Type:	Dovetail
Spindle Taper - Vertical:	3MT
Spindle Taper - Horizontal:	~
Longitudinal Travel (X-Axis) (mm):	300
Cross Travel (Y-Axis) (mm):	130
Vertical Travel (Z-Axis) (mm):	180
Type of Slides:	Dovetail
Ram Travel (mm):	~
Spindle to Table (mm):	280
Spindle to Base:	~
Spindle Travel / Diameter (mm):	Fixed
Throat Depth (max.) (mm):	160
Tilting Head (Left ~ Right):	±45°
Tilting Head (Forward ~ Back):	Fixed
Drilling Capacity (mm):	13
End Milling Capacity (mm):	16
Face Milling Capacity (mm):	30
Power Feed - Quill (mm/rev):	~
Power Feed - Longitudinal (X-Axis) (mm/min):	~
Power Feed - Cross (Y-Axis) (mm/min):	~
Power Feed - Vertical (Z-Axis) (mm/min):	~
Table T-Slot Size (inch / mm):	12
Work Table Load Capacity (kg):	25
Spindle Speeds Vertical (No./ rpm):	Variable (100 - 2500)
Spindle Speeds Horizontal (No./ rpm):	~
Spindle Speeds - Universal Head:	~
Motor Power - Vertical Spindle (kW / hp):	0.35 / 0.5
Motor Power - Horizontal Spindle (kW / hp):	~
Motor Power - Universal Head:	~
Voltage / Amperage (V / amp):	240 / 10
Nett Weight (kg):	78

Description

Excellent quality mini mill drill machine designed for the model engineer

Features

- The HM-10L mini mill drill is powered by a 350W (1/2hp) electronic variable speed motor
- Mill head tilts to ±45° both directions
- Heavy duty cast iron body and base for better stability
- All slides utilise dovetail construction for maximum rigidity
- Precision machined work table
- 2-speed gearbox (high/low) drive system to maximise torque
- Ground work table with T-slots
- Concertina slide-way covers
- Spring assisting milling head return
- Vertical micro feed dial 0.025mm
- Metric dial graduations 0.02mm

Includes

— 13mm keyed-drill chuck

Product Brochure For M150A

- 3MT Arbor
- Set of spanners to suit
- Safety cutter guard

Specific Features



Electronic variable speed system



Switch Box



Head Right View



9 Quill Handle



Head Controls



Head Left View



Chuck Guard



Fine Adjustment Dial



Low High Speed Lever



Vertical Height reading



Milling head Tilts 45 Degrees both directions



Sliding Lock



Milling table

Product Brochure For M150A

Recommended Accessories

T773
Industrial Mobile Tooling
Cabinet Workstation



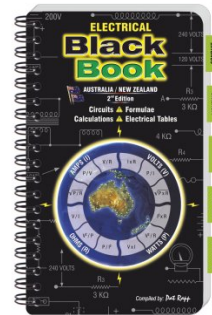
L300
Magnetic Swarf Remover



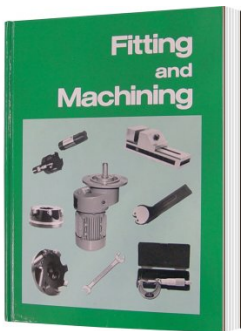
M9991
Magnetic Floor Sweeper



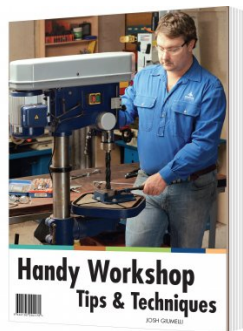
L342
Electrical Black Book



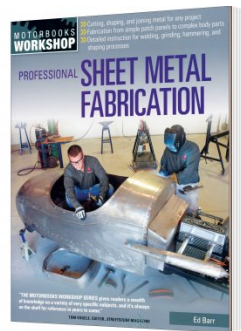
L341
Fitting and Machining Technical
Book



L345
Handy Workshop Tips &
Techniques - 1st Edition



L3455
Professional Sheet Metal
Fabrication Book



C926
Collet & Chuck Set - 20 Piece

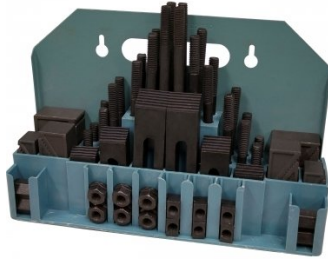


Product Brochure For M150A

C922B
Collet & Chuck Set - 8 Piece



C0955
Clamp Kit 58 piece - Workshop Series



V104
Vertex K-Type Milling Vice



M3301
Metric HSS Slot Drill & End Mill Set - 10 Piece



M3321
Imperial HSS Slot Drill & End Mill Set - 10 Piece



M3280
13mm HSS End Mill Long Series



M182
Precision Boring Head Kit



M192
Boring Head Shank



M180
Boring Bar Set - 9 piece



M250
Parallel Set - 8 Piece



M530
Universal Milling Kit - 4 Piece



M528
Face Mill 90° - Positive Rake

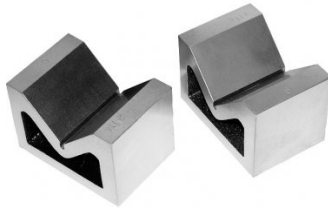


Product Brochure For M150A

L066
KYOCERA Carbide Inserts -
Milling



V004
Cast Iron Vee Block



R001
Rotary Table



R0014
Tilting Rotary Table



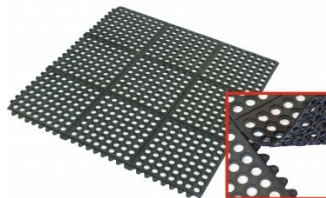
P235
Coolant Pump & Tank



M800
Rubber Mat - Anti-Fatigue



M805
Rubber Mat - Anti-Fatigue



S090A
Soluble Metal Cutting Fluid - 1
Litre



S090
Soluble Metal Cutting Fluid - 5
Litre



S076
Cutting Tool Lubricant Fluid -
500ml



S077
Drilling, Tapping & Cutting Tool
Lubricant Spray - 400g



S074
Cutting Tool Lubricant Paste -
500g



Product Brochure For M150A

O043
Rust & Corrosion Preventive



O042
General Purpose Lubricant & Corrosion Inhibitor



O044
Rust & Corrosion Preventive

