

Product Brochure For M160

Workshop Turret Milling Machine - HM-50

Table Travel: (X) - 600mm (Y) - 220mm (Z) - 340mm



ORDER CODE:	M160
MODEL:	HM-50
Digital Readout:	Optional
Type:	Vertical
Table Size (mm):	1000 x 240
Column Type:	~
Spindle Taper - Vertical:	NT30
Spindle Taper - Horizontal:	~
Longitudinal Travel (X-Axis) (mm):	600*
Cross Travel (Y-Axis) (mm):	220*
Vertical Travel (Z-Axis) (mm):	340
Type of Slides:	Dovetail
Ram Travel (mm):	340
Spindle to Table (mm):	430
Spindle to Base:	~
Spindle Travel / Diameter (mm):	125 / 90
Throat Depth (max.) (mm):	600
Tilting Head (Left ~ Right):	±90°
Tilting Head (Forward ~ Back):	Fixed
Drilling Capacity (mm):	30
End Milling Capacity (mm):	25
Face Milling Capacity (mm):	80
Power Feed - Quill (mm/rev):	Manual
Power Feed - Longitudinal (X-Axis) (mm/min):	20 - 2000
Power Feed - Cross (Y-Axis) (mm/min):	Optional *
Power Feed - Vertical (Z-Axis) (mm/min):	Optional *
Table T-Slot Size (inch / mm):	14
Work Table Load Capacity (kg):	175
Spindle Speeds Vertical (No./ rpm):	9 (220 - 2400)
Spindle Speeds Horizontal (No./ rpm):	~
Spindle Speeds - Universal Head:	~
Motor Power - Vertical Spindle (kW / hp):	1.5 / 2
Motor Power - Horizontal Spindle (kW / hp):	~
Motor Power - Universal Head:	~
Voltage / Amperage (V / amp):	240 / 10
Nett Weight (kg):	850

Description

A well-built entry level turret milling / drilling machine with a powerful continuous-load 1.5kW / 2hp motor, intended for trade use. The work table is precision made with adjustable dovetail guides and is recognised for its 600mm X axis by 200mm Y axis travel. There is a three armed handle on the side for drilling also incorporating a fine feed control hand wheel on the front for milling. The screwed belt guard covers on each side of the head offer secure safety whilst providing easy access to the belts and pulleys for speed changing.

Other features include taper roller bearing support for the spindle, easy-to-read drilling depth stop, low voltage work light, 8 piece metric collet chuck set, coolant system, X axis power feed unit, drill chuck, 2 & 3 morse taper adaptors. The combination of generous sized vertical support and rugged cast iron construction throughout reduces vibration and guarantees accurate and chatter-free operation.

Features

- Mill head tilts to ±90° left to right
- 340mm horizontally sliding and rotating ram
- NT30 vertical spindle is hardened and ground
- Precision-ground dovetail slide-ways and table
- Precision milling table incorporating machined T-slots
- Rear concertina slide-way cover
- Forward and reverse on/off switch
- Fine hand wheel operated quill feed

Product Brochure For M160

- Swarf & splash tray
- Spindle lock for quill
- Metric dial graduations @ 0.02mm for X , Y & Z-Axis
- Vertical dial graduations on hand wheel @ 0.05mm
- All slides utilise dovetail construction for maximum rigidity
- * Note: X & Y travels maybe reduced due to safety stops
- * Note: Optional Y & Z power feeds require additional parts & fitting (not included)

Includes

- X-Axis power-feed
- Safety cutter guard
- Swarf tray
- Coolant system
- Halogen lamp
- Drill chuck & arbor
- 2 & 3MT adaptors
- 8-piece metric collet chuck set (4-16mm)

Specific Features



X Axis Power Feed with Rapid

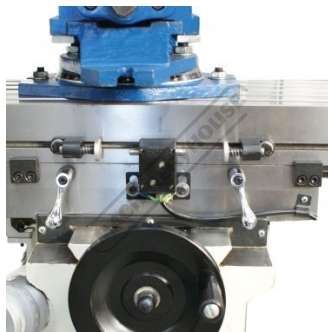


Table Feed Limit Switches



Quill Feed Handle and Fine Feed Dial

HM-50 VERTICAL MILLING MACHINE	
DRILLING	30mm
MILLING	25mm
MOTOR	1.5kW
SERIAL NO	
DATE	
KEN 009 717 668	
SPINDLE SPEED (R.P.M)	
SPINDLE	MOTOR
DE 220	DG 760
CE 320	AF 1300
DF 400	BG 1600
BE 500	AG 2400
CF 700	

Spindle Speed Chart



Tilting Head Scale



Adjustable Swivel & Sliding Ram



Concertina Slide Way Cover



Coolant Pump



Halogen Light



Knee Feed Handle



Control Panel



Coolant Hose

Product Brochure For M160



Accessories Included, Metric Collet Chuck, Drill Chuck & Arbor, Morse Taper Adaptors

Recommended Accessories

L300
Magnetic Swarf Remover



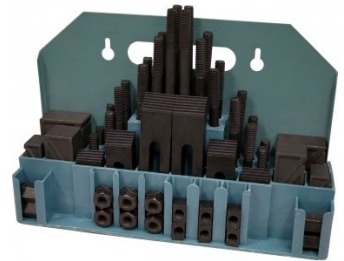
M9991
Magnetic Floor Sweeper



V106
Vertex K-Type Milling Vice



C0965
Clamp Kit 58 piece - Workshop Series



M540
Face Mill Arbor



M530
Universal Milling Kit - 4 Piece



M3301
Metric HSS Slot Drill & End Mill Set - 10 Piece

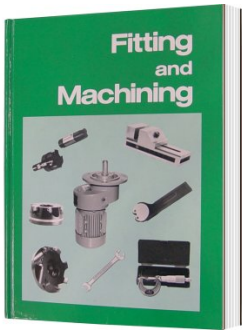


M3321
Imperial HSS Slot Drill & End Mill Set - 10 Piece

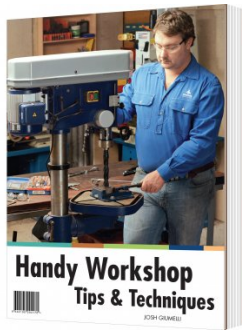


Product Brochure For M160

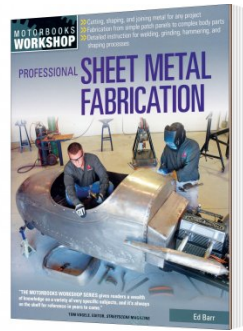
L341
Fitting and Machining Technical Book



L345
Handy Workshop Tips & Techniques - 1st Edition



L3455
Professional Sheet Metal Fabrication Book



R004
Vertex Super Indexing Head



R006
Vertex Rotary Table



M242
Angle Plate - Precision Ground



M243
Angle Plate - Precision Ground



M182
Precision Boring Head Kit



M183
Precision Boring Head Kit



M184
Precision Boring Head



M193
Boring Head Shank



M197
Boring Head Shank



Product Brochure For M160

M250
Parallel Set - 8 Piece



M252
Parallel Set - 18 Piece



M180
Boring Bar Set - 9 piece



M181
Boring Bar Set - 12 piece



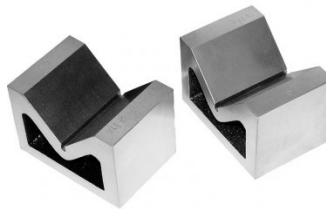
V010
Alloy Steel Vee Block



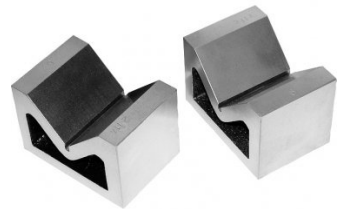
V003
Cast Iron Vee Block



V004
Cast Iron Vee Block



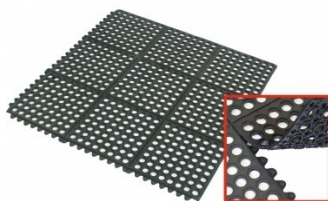
V006
Cast Iron Vee Block



M800
Rubber Mat - Anti-Fatigue



M805
Rubber Mat - Anti-Fatigue



S090A
Soluble Metal Cutting Fluid - 1 Litre



S090
Soluble Metal Cutting Fluid - 5 Litre



Product Brochure For M160

S076

Cutting Tool Lubricant Fluid - 500ml



S077

Drilling, Tapping & Cutting Tool Lubricant Spray - 400g



S074

Cutting Tool Lubricant Paste - 500g



O043

Rust & Corrosion Preventive



O042

General Purpose Lubricant & Corrosion Inhibitor



O044

Rust & Corrosion Preventive

