

## Product Brochure For M607D

### Industrial Turret Milling Machine - BM-40V

Table Travel: (X) - 860mm (Y) - 360mm (Z) - 425mm

Includes Digital Readout System, Vice & Clamp Kit

**On Sale**

Ex GST

Inc GST

**\$19,508.00**

**\$22,434.20**

**\$18,000.00**

**\$20,700.00**



ORDER CODE:	M607D
MODEL:	BM-40V
Digital Readout:	3-Axis Digital Readout
Type:	Vertical
Table Size (mm):	1370 x 254
Column Type:	~
Spindle Taper - Vertical:	NT30
Spindle Taper - Horizontal:	~
Longitudinal Travel (X-Axis) (mm):	860
Cross Travel (Y-Axis) (mm):	360
Vertical Travel (Z-Axis) (mm):	425
Type of Slides:	Dovetail
Ram Travel (mm):	508
Spindle to Table (mm):	505
Spindle to Base:	~
Spindle Travel / Diameter (mm):	127 / 86
Throat Depth (max.) (mm):	735
Tilting Head (Left ~ Right):	±90°
Tilting Head (Forward ~ Back):	±45°
Drilling Capacity (mm):	~
End Milling Capacity (mm):	~
Face Milling Capacity (mm):	~
Power Feed - Quill (mm/rev):	0.015 / 0.04 / 0.08
Power Feed - Longitudinal (X-Axis) (mm/min):	20 - 2000
Power Feed - Cross (Y-Axis) (mm/min):	Optional
Power Feed - Vertical (Z-Axis) (mm/min):	Optional
Table T-Slot Size (inch / mm):	5/8
Work Table Load Capacity (kg):	300
Spindle Speeds Vertical (No./ rpm):	Variable (70 - 3500)
Spindle Speeds Horizontal (No./ rpm):	~
Spindle Speeds - Universal Head:	~
Motor Power - Vertical Spindle (kW / hp):	2.2 / 3
Motor Power - Horizontal Spindle (kW / hp):	~
Motor Power - Universal Head:	~
Voltage / Amperage (V / amp):	415
Nett Weight (kg):	1300

### Description

The BM-40V Industrial turret milling machine is manufactured in Taiwan to a strict precision engineering ultra-high tolerance & superior excellence to cope with many jobs set out by the professional machinist, and importantly to deliver many years of valuable & reliable service.

This medium robust milling machine package is next in the line up from the BM-30A model and is also complete with a few of the most desirable features for example, easy to use variable spindle speed dial, turcite B coated X & Y slide-ways that reduces friction to provide smooth table movement even when loaded up with a heavy job, hardened & ground work table & slide-ways, heavy duty X-axis auto power-feed with adjustable feed stops, 3-axis digital readout system fitted, manual operated oil pump to keep slides in perfect working order and also includes a machine vice & clamp kit set to get you started.

Another reliable feature in this range of precision milling machines is the manufacturing process of the main body & supports, it is made up from the highest quality Meehanite® cast iron. The key to the undisputed success of Meehanite® metals is the rigid application of its patented manufacturing process to provide ultimate strength & durability performance.

## Product Brochure For M607D

To conclude this BM-40V turret milling machine is the most common size machine that's found in approximately 70% of engineering workshops and when its put to the test it certainly performs its duties with no hesitation.

### Features

- 3 Axis digital readout fitted
- 3HP 415V motor, dial variable speed system (BM-40V)
- NT30 spindle taper with a chrome & ground quill
- Hardened & ground work table & slide-ways
- Turcite "B" coated X & Y Axis slide-ways reduces friction for smooth operation
- All slides utilise dovetail construction for maximum rigidity
- Meehanite casting for high strength & minimal deformation
- Quality electrics & overload protection in an easy access enclosure
- Horizontal travelling ram mounted on a rotating base allowing repositioning of spindle
- The ram incorporates a tail lug (spigot) to accept a slotting attachment etc.
- High / neutral and low gear selection lever to maximise torque
- Align AL-500S X-Axis power-feed with adjustable micro switch feed stops
- Metric dial graduations @ 0.02mm for X , Y & Z-Axis
- Automatic quill feed 0.015, 0.04, 0.08mm/rev
- Automatic cut off depth stop on quill
- Oil lubrication pump and reservoir
- Slide-way covers Y & Z-Axis
- Mill head tilts to  $\pm 45^\circ$  forward and back
- Mill head tilts to  $\pm 90^\circ$  left and right
- Manual quick action quill lever
- Mechanical spindle brake
- Low voltage LED work light
- Tool box and manual

### Includes

- 3-Axis digital readout fitted
- One-shot oil lubrication pump and reservoir
- Drawbar M12 thread
- Coolant system
- Slide-way covers
- X-Axis power-feed
- LED work light
- Machine vice (150mm)
- Clamp kit
- Safety cutter guard
- Swarf tray

### Specific Features



Variable Speed Head 70 3500rpm



Control Panel



3 Axis Digital Readout System



Hi Low Spindle Speed Range Selector

Product Brochure For M607D



Spindle Brake



Forward Reverse Switch



LED Work Light



Coolant Nozzle



Quill Feed Depth Stop



Quill Feed Engagement Lever



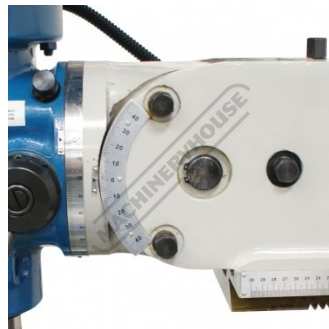
Feed Engage Disengage Drive



Feed Selector



Lubrication Pump



Universal Tilting and Rotating Head



Adjustable Swivel & Sliding Ram



Tail Lug Spigot Supports Slotting Head



Concertina Slide Way Cover



Table Feed Limit Switches



X Axis Power Feed with Rapid



Knee Feed Handle

Product Brochure For M607D



Cross Feed Handle



Head Side View



Head Controls

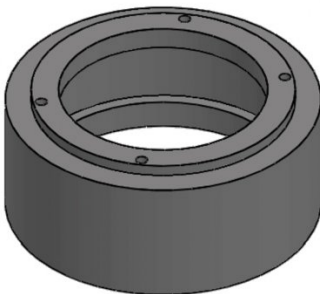


Safety Quill Guard

**Recommended Accessories**

M223

Riser Spacer - Suits Turret Milling Machines



C091

Clamp Kit 58 piece - Workshop Series



C928

Collet & Chuck Set - 20 Piece



M3301

Metric HSS Slot Drill & End Mill Set - 10 Piece



M3321

Imperial HSS Slot Drill & End Mill Set - 10 Piece



M184

Precision Boring Head



M185

Precision Universal Facing & Boring Head



M197

Boring Head Shank



Product Brochure For M607D

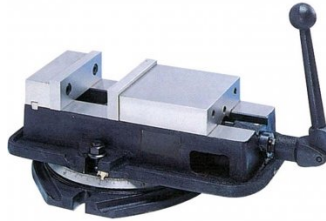
**M181**  
Boring Bar Set - 12 piece



**M181A**  
Boring Bar Set - 4 piece



**V306**  
Vertex Anglock Machine Vice



**C290**  
Heavy Duty Drill Chuck - Keyed Type



**C294**  
Industrial Drill Chuck - Keyless Type



**D451**  
NT30 x JT3 Drill Chuck Arbor



**M250**  
Parallel Set - 8 Piece



**M252**  
Parallel Set - 18 Piece



**R008**  
Vertex Rotary Table



**R010**  
Vertex Rotary Table



**D001**  
Vertex Dividing Head - Semi Universal



**C280**  
3 Jaw Self Centring Lathe Chuck



Product Brochure For M607D

**R002**  
Vertex Super Indexing Head



**M510**  
Face Mill 90° - Positive Rake



**M512**  
Face Mill 90° - Positive Rake



**M503**  
Face Mill 90° - Positive Rake



**M515**  
Face Mill 45° - Super High-Rake



**M517**  
Face Mill 45° - Super High-Rake



**M518**  
Face Mill 45° - Super High-Rake



**L065**  
KYOCERA Carbide Inserts - Milling



**L066**  
KYOCERA Carbide Inserts - Milling



**L059**  
Carbide Inserts - Milling



**M540**  
Face Mill Arbor



**M542**  
Face Mill Arbor



Product Brochure For M607D

M544  
Face Mill Arbor



M545  
Face Mill Arbor



M247  
Air Power Drawbar



M2295  
Power Feed Unit



M229  
Power Feed Unit



S090A  
Soluble Metal Cutting Fluid - 1  
Litre



S090  
Soluble Metal Cutting Fluid - 5  
Litre



S076  
Cutting Tool Lubricant Fluid -  
500ml



S077  
Drilling, Tapping & Cutting Tool  
Lubricant Spray - 400g



S074  
Cutting Tool Lubricant Paste -  
500g



L300  
Magnetic Swarf Remover



M9991  
Magnetic Floor Sweeper



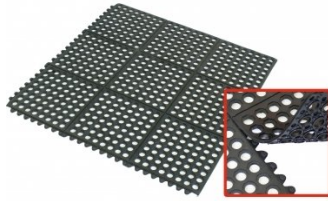
Product Brochure For M607D

---

**M800**  
Rubber Mat - Anti-Fatigue



**M805**  
Rubber Mat - Anti-Fatigue



**O043**  
Rust & Corrosion Preventive



**O042**  
General Purpose Lubricant & Corrosion Inhibitor



**O044**  
Rust & Corrosion Preventive

