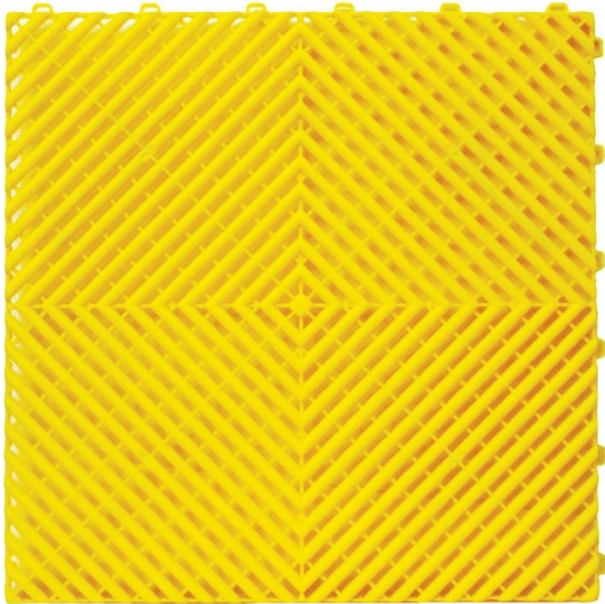


Product Brochure For M782

Industrial Flooring Tiles - Workshop - Yellow

QTY 25 Per Pack

Covers 4 Square Metres



ORDER CODE:	M782
Type:	Tiles
Quantity Per Pack (No.):	25
Colour:	Yellow
Tile Floor Covering (m2):	4
Size (L x W x H) (mm):	400 x 400 x 18



Description

Floor tiles available in Black, Grey & Yellow colours

A popular flooring solution where drainage and ventilation are required. In those situations these ventilated industrial tiles can be installed to allow the underlying surface to dry. The ribbed pattern interlocking tiles are oil resistant and can withstand heavy loads in the garage, warehouse or workshop floors.

NOTE: Not suitable for sulphuric or hydrochloric acid

Features

- Made from yellow high-impact polymer plastic
- Ventilated tile design for fluids to escape through
- Great for covering up floor imperfections such as cracks or stains
- Easy to assemble by simply connecting and snap lock together
- Square grid pattern, helps prevent accidental slips
- Can be cut to fit around difficult objects with a saw
- Resistant to oils & automotive fluids
- Each tile when connected is secured in place by 24 locking points

Includes

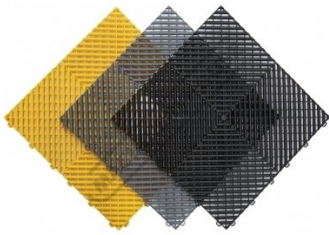
- 25 yellow tiles per pack to cover 4 square metres

Optional Accessories

- Black tapered edges with lug inserts 10 pack (M785)
- Yellow tapered edges with lug inserts 10 pack (M788)
- Black corners 4 pack (M789)
- Yellow corners 4 pack (M790)

Product Brochure For M782

Specific Features



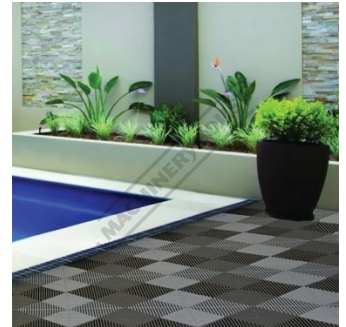
Range of Colours Available



Shown How Optional Edges Clip Together



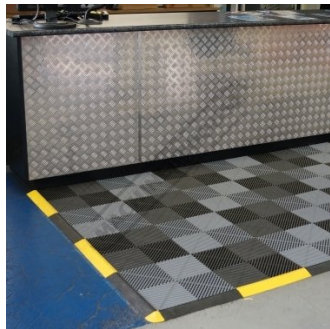
Close Up on Edge



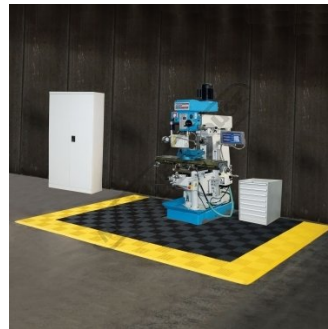
Used in a Wet Area



Workshop



Shown being Used in Front of Counter



Shown Being Used with a Milling Machine



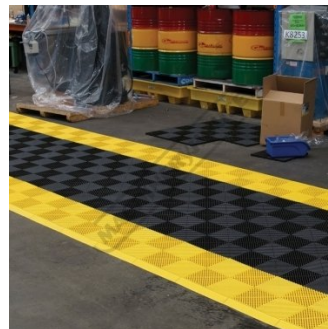
Shown with Lathe



Create your own Size Mat



Yellow Edge Mat



Yellow Edge Path