

Product Brochure For P6133

## 17.2 x 31.2mm Slotted Die

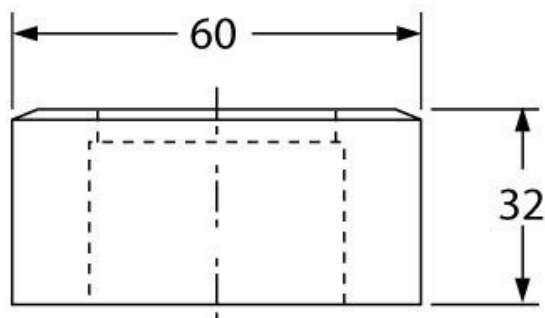
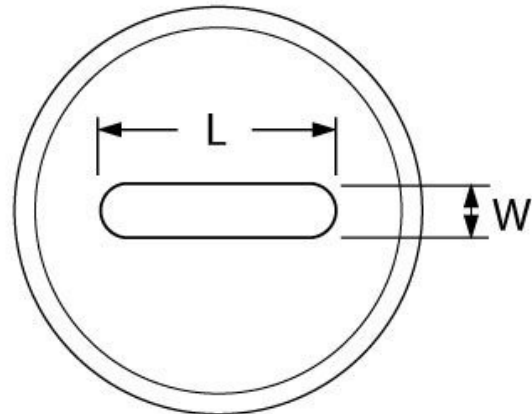
Hi -Grade Tool Steel Imported From Japan  
Ø60mm Outside Body Diameter



**On Sale**

Ex GST	Inc GST
<del>\$160.00</del>	<del>\$184.00</del>
<b>\$126.96</b>	<b>\$146.00</b>

ORDER CODE:	P6133
Shape - Type:	Slotted Die - 0D2
Square or Slot Hole Size (W x L) (mm):	17.2 x 31.2
Punch Locating Diameter x Length (mm):	~
Die Outside Body Diameter x Height (mm):	Ø60 x 32mm



### Description

Punch and Dies are Manufactured by Sunrise in Taiwan using Hi -Grade Tool Steel imported from Japan. The manufacturing process involves machining via hi tech CNC machines lathes & mills, vacuum heat treatment with multiple tempering at high temperatures before a final quality inspection/testing process all of which ensures an accurate, precise, durable & stable product.

### Features

- PLEASE NOTE FOLLOWING RECOMMENDATIONS WHEN SELECTING DIE CLEARANCE:
- Material Thickness - 2 ~ 4mm = Die Clearance 0.2mm
- Material Thickness - 4 ~ 9.5mm = Die Clearance 0.7mm
- Material Thickness - 10 ~ 14.5mm = Die Clearance 1.2mm
- Material Thickness - 15 ~ 19.5mm = Die Clearance 1.7mm
- Material Thickness - 20 ~ 24mm = Die Clearance 2.2mm

## Product Brochure For P6133

---

### Specific Features



Bottom View

### Recommended Accessories

P6131

16 x 30mm Slotted Punch

