

Product Brochure For P9049

CNC Plasma Cutting Table - Swiftcut 4000XP

4000 x 2000mm Dowlndraft Table system
Hypertherm MAXPRO200 - Cuts up to 32mm Mild Steel Plate

On Sale

Ex GST

Inc GST

~~\$132,980.00~~ ~~\$152,927.00~~
\$132,000.00 **\$151,800.00**



ORDER CODE:	P9049
MODEL:	Swift-Cut 4000XP
Cutting Capacity - Mild Steel (mm):	32
Cutting Table Capacity (mm):	4000 x 2000
Plasma Cutting Unit:	MAXPRO200
Current Output (amp):	32 - 200
Duty Cycle (Typical):	100% @ 200A
Fume Management (Type):	Dowlndraft System
Cutting Gas (Type):	Air, O2, N2
Plasma Unit Input Voltage (V):	415V
Machine Input voltage:	~
Plasma Unit Input Amperage (amp):	~
Nett Weight (kg):	2600



Description

Swiftcut 4000XP – Hi Performance CNC Plasma 4000 x 2000mm Cutting Table and Hypertherm MAXPRO200 to cut up to 32mm

The 4000XP has been purpose built to achieve extremely high cutting speeds and heavy duty cutting. Our Swiftcut plasma cutting tables offer an affordable alternative to outsourcing, enabling you to take greater control of your business.

Features

- TABLE FEATURES:
 - Heavy duty base and gantry to support 200amp cutting, deeper dross boxes and 6mm material support slats.
 - Down Draft extraction table for efficient control of sparks and fumes. Requires separate extraction system, not included
 - High precision Linear motion guideways on X & Y Axis
 - Omron 400W AC Servo motors
 - Dual drive Y-axis
 - Proximity sensing for reliable and robust switching
 - Helical Rack and pinion drive system
 - Magnetic breakaway head eliminates damage to torch and improves safety
 - Cut metal up to 32mm thick using a Hypertherm MAXPRO200 system
 - Digital Torch-Height Control (DTHC) Quick response for improved cut quantity and improved torch consumable life
 - Dynamic Cut Control (DCC) is available on all Swiftcut XP machines, This feature enables Software control of cutting amps and air pressure, Error messages, air pressures and critical data from the plasma unit is displayed on Swiftcut control screen for operator convenience, On the fly arc voltage, air pressure and cutting speed control ensures the highest quality cut at all times. INDUSTRY 1st UNIQUE TO SWIFT-CUT
- OPERATORS PANEL:
 - Free-Standing Operators Console
 - 18.5" flat panel LCD touch screen
 - Built in controller
 - Wireless keyboard and mouse
 - E-Stop safety button
 - External USB port for transfer of files
 - Easy access for maintenance
- SOFTWARE: Standard
 - Auto Arc voltage capture and regulation to automatically adjust the cut settings to suit varied material characteristics

Product Brochure For P9049

- Program recovery function automates starting part way through a program
- Sheet trim function to easily trim off excess skeleton
- G code browser & editor for the novice operator
- G code favorites - user customised
- DXF, DWG & JPEG photo import function
- 3D part viewer
- Advanced importer with ability to re-export and save the filtered DXF
- 5 user assigned reference points for jigs and fixtures
- Sheet rotation function
- Automatic lead in / out of cut paths
- Dry run capability for testing prior to cutting
- Parametric shapes library with over 80 shapes
- Automatic cutting consumable recommendations based on material and thickness
- Team viewer software for remote support
- Multiple simultaneous DXF import
- Automatic part in part nesting for best sheet utilisation
- 3D cutting simulation
- HYPERTHERM MAXPRO200 PLASMA SYSTEM
- Advantages over Hypertherm POWERMAX series:
 - Mixed gas plasma process for improved cut speeds and part finish (O2/air, N2/N2 Air/Air)
 - Long life consumables (water cooled torch) up to 3 times longer than Powermax
 - 32mm pierce capacity
 - Cut speeds vs Powermax 125 are double the speed for material 15mm and above

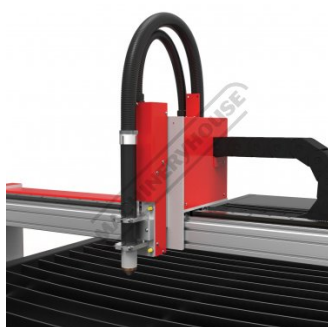
Optional Accessories

- Engraving tool

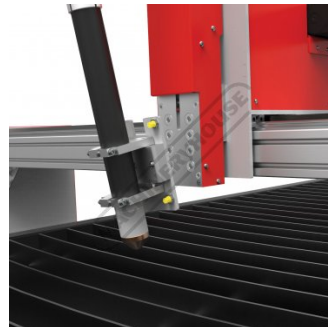
Specific Features



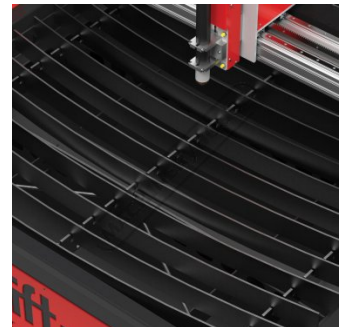
Front



XP Table Head



XP Table Breakaway Head



XP Downdraft



XP Table Rack and Rail



XP Safety



XP Back Angled



XP Back Angled 2

Product Brochure For P9049

Recommended Accessories

W2724
Laser Fume Extraction



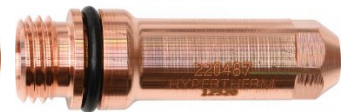
P9065
Swift-Marker XP Machines



P8631
Hypertherm Electrode 50A
AIR/O2



P8632
Hypertherm Electrode 130A
AIR/O2



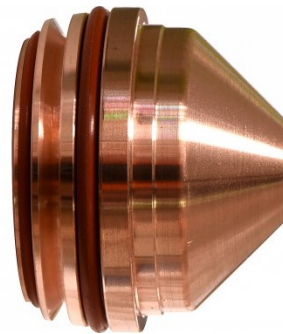
P8633
Hypertherm Electrode 200A
AIR/O2



P8634
Hypertherm Electrode 130-200A
N2 GAS



P8636
Hypertherm Nozzle 50A AIR

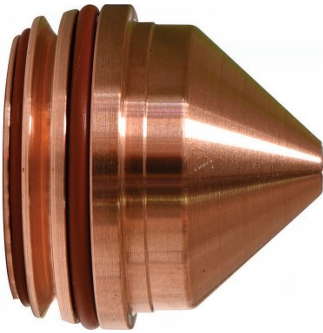


P8637
Hypertherm Nozzle 130A
AIR/N2



Product Brochure For P9049

P8638
Hypertherm Nozzle 200A
AIR/N2



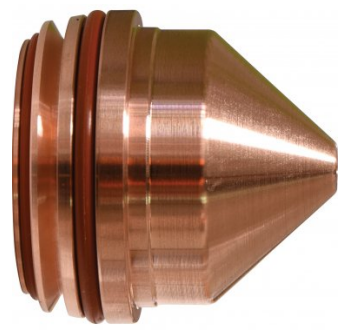
P8639
Hypertherm Nozzle 50A O2



P8640
Hypertherm Nozzle 130A O2



P8641
Hypertherm Nozzle 200A O2



P8642
Hypertherm Swirl Ring 50A
AIR/O2 130~200A N2



P8643
Hypertherm Swirl Ring
130~200A AIR 130A O2



P8644
Hypertherm Swirl Ring 200A O2



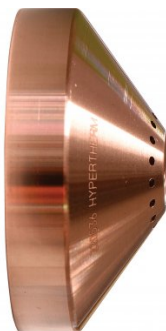
P8645
Hypertherm Shield Cap



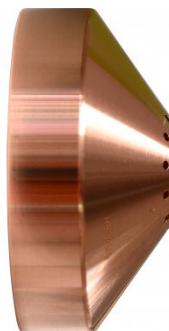
P8646
Hypertherm Shield 50A AIR/O2



P8647
Hypertherm Shield 130A AIR/N2



P8648
Hypertherm Shield 130A O2



P8649
Hypertherm Shield 200A AIR/N2



Product Brochure For P9049

P8650
Hypertherm Shield 200A O2



P8651
Hypertherm Watertube



P8652
Hypertherm Torch Coolant

