

Product Brochure For T6882

## Professional Series Roller Cabinet - TPS-568T

8 Drawers

**On Sale**

<b>Ex GST</b>	<b>Inc GST</b>
<del>\$1,648.00</del>	<del>\$1,895.20</del>
<b>\$1,360.00</b>	<b>\$1,564.00</b>



ORDER CODE:	T6882
MODEL:	TPS-568T
Type:	Roller Cabinet
Series:	Professional Series
Drawers (No.):	8
Overall Dimensions (W x D x H) (mm):	1438 x 559 x 1114
Nett Weight (kg):	166



### Description

Get ready for a toolbox revolution with the all-new HAFCO Professional Series – the ultimate gear for your workshop. Forget the flashy colours; it's all about the bold and professional vibes that Nardo Grey and gloss Black bring to the table. Now, your tools don't just work hard; they look dam good doing it.

The HAFCO Professional Series are absolute beasts with units ranging from 56 inches to a whopping 72 inches in size. Choose your weapon – the tool chest, the roller cabinet, or go all out with the Hutch for that super clean and tidy workshop feel.

But it's not just about looks. These toolboxes mean serious business. Gas struts make opening lids easy, while the key lockable feature keeps your tools safe and sound. Soft push-to-close drawers and full-length under drawer opening tabs make opening each drawer from any position a breeze. The ball-bearing slides ensure drawers smooth operation and the larger drawers even sport dual slides for extra strength. Your tools won't slide around or get damaged, thanks to the foam grip mats lining supplied in each drawer and the oversize castor wheels will make pushing these behemoths a breeze.

Upgrade your workshop game today with the HAFCO Professional Series – where toughness meets style in smart shade of Nardo Grey.

#### TPS-568T DIMENSIONS - (WIDTH x DEPTH x HEIGHT)

- Overall size: 1438 x 559 x 896mm
- Overall with casters: 1438 x 559 x 1114mm
- Package size: 1507 x 630 x 1270mm
- 1 drawer (Top drawer): 1346 x 500 x 140mm (50kg Per Drawer)
- 1 drawer (Second drawer): 1346 x 500 x 75mm (50kg Per Drawer)
- 2 drawers (Rows 3,4 LHS): 970 x 500 x 75mm (50kg Per Drawer)
- 1 drawer (Row 3, RHS): 335 x 500 x 153mm (100kg Per Drawer)
- 1 drawer (Row 5 LHS): 970 x 500 x 153mm (100kg Per Drawer)
- 1 drawer (Bottom drawer LHS): 970 x 500 x 179mm (100kg Per Drawer)
- 1 drawer (Bottom drawer RHS): 335 x 500 x 337mm (100kg Per Drawer)

### Features

- Huge 8 Drawer Roller Cabinet
- Gloss Nardo Gray finish
- Ball bearing slides on all drawers
- Dual slides on larger drawers for extra weight
- Over sized handle can be mounted on either side
- Brakes on front wheels

## Product Brochure For T6882

- Foam lined drawers
- Key lockable
- Full-width drawer opening latch

### Specific Features



Drawers Open



Push Handle



Key Lockable



Protective Drawer Liners



Power Inlet



Ball Bearing Slide Drawers



Full-Width Drawer Opening Latch



2 x Swivel Brake Wheels



2 x Fixed Wheels



Shown with Optional TPS 56H Top Hutch and Tools



Shown with Optional TPS-65D Side Cabinet & Tool Chest TPS-568C

Product Brochure For T6882

**Recommended Accessories**

T6881  
Professional Series Top Hutch



T6880  
Professional Series Tool Chest



T6888  
Professional Series Side Cabinet



T6835  
Professional Series Tool Chest & Roller Cabinet - Package Deal



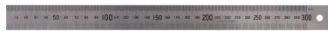
T703  
Magnetic Spray Can & Screwdriver Holder



Q620  
Steel Rule



Q621  
Steel Rule



Q622  
Steel Rule



Product Brochure For T6882

Q623  
Steel Rule



Q630  
Double Ended Scriber



Q631  
Pocket Pen Scriber



P368  
Automatic Centre Punch



P367  
Centre Punch Set - 3 Piece



P365  
Pin Punch Set - 6 Piece



P363  
Cold Chisel Set - 3 Piece



P364  
Punch & Cold Chisel Set - 14 Piece



Q601  
Degree Protractor



Q634  
Spring Divider



Q635  
Spring Caliper - Inside

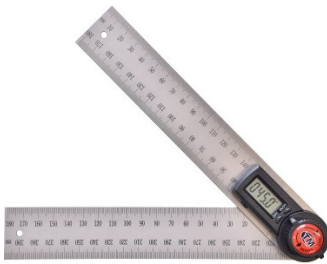


Q636  
Spring Caliper - Outside



Product Brochure For T6882

**M970**  
Digital Angle Rule



**M972**  
Digital Angle Rule



**M974**  
Digital Angle Rule



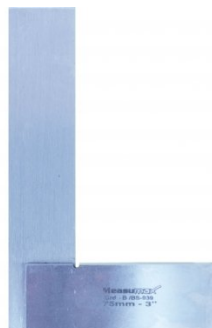
**Q1945**  
Vernier Calipers



**Q1871**  
Digital Caliper - Coolant Proof



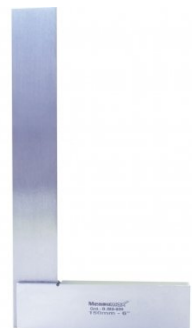
**Q644**  
Precision Steel Square



**Q645**  
Precision Steel Square



**Q646**  
Precision Steel Square



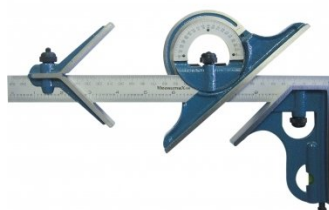
**Q647**  
Precision Steel Square



**M012**  
Measuring Kit - 4 Piece



**Q200**  
Combination Set



**Q200A**  
Combination Set



Product Brochure For T6882

**Q201**  
Universal Bevel Protractor



**Q614**  
Radius Gauge



**Q615**  
Radius Gauge



**Q610**  
Screw Pitch - Thread Gauge



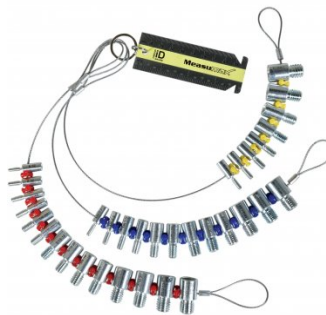
**Q612**  
Screw Cutting Gauge



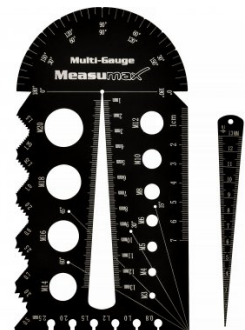
**Q616**  
Feeler Gauge Set



**Q608**  
Nut & Bolt Identification Set



**Q602**  
Metric Multi Gauge



**Q605**  
Measuring Box set



**M977**  
Digital Bevel Box



**Q2041**  
IP-65 Digital Protractor



**M046**  
Metric Dial Indicator



Product Brochure For T6882

**Q211**  
Metric Dial Indicator



**Q212**  
Imperial Dial Indicator



**M055**  
Magnetic Base and Dial Indicator



**M050**  
Magnetic Base - Standard



**M695**  
Toolmaster Universal 3D Tester



**Q670**  
Refractometer



**Q205**  
Level - Precision Machine



**Q207**  
Level - Precision Machine



**Q208**  
Level - Precision Frame



**Q618**  
Telescopic Gauge Set - 6 Piece



**H820**  
Metric Hex Key Set with T-Bar Handle



**H821**  
Imperial Hex Key Set with T-Bar Handle



Product Brochure For T6882

**H822**  
Torx® Key Set with T-Bar Handle



**D508**  
HSS Industrial Centre Drill Set – 5Pcs



**D1061**  
HSS Countersink Set (90° 3 Flute Type) - 6 Piece



**D1051**  
HSS Countersink Set (90° Cross Hole Type) - 4 Piece



**D1071**  
HSS Sheet Metal Step Drill Set - 3 Piece



**D1272**  
Metric 135° Precision HSS Drill Set - 25 Piece



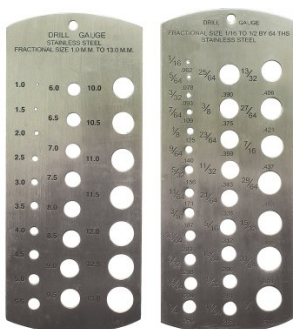
**D1282**  
Imperial 135° Precision HSS Drill Set - 29 Piece



**D1285**  
Metric 135° Precision HSS Drill Set - 51 Piece



**M988**  
Metric & Imperial Drill Gauge



**M0010**  
Pick Up Tool with Magnetic Head & 1 x LED Light



**M0009**  
Magnetic Pick Up Tool & Inspection Mirror Set



**M967**  
Contour Gauge



Product Brochure For T6882

**M968**  
Contour Gauge



**W6455**  
Digital Moisture Meter



**W300**  
Carbide Wood Turning Tools - 6 Piece Set



**W301**  
HSS Wood Turning Tools - 8 Piece Set



**W302**  
HSS Wood Turning Tools - 6 Piece Set



**W3033**  
HSS Pen Turning Tools - 3 Piece Set



**F100**  
Engineers Files, 5 Piece Set - Second Cut



**T012**  
Metric Alloy Steel Tap & Die Set - 32 Piece



**T013**  
Metric HSS Tap & Die Set - 32 Piece



**T014**  
Metric Alloy Steel Tap & Die Set - 45 Piece



**T015**  
Imperial Alloy Steel Tap & Die Set - 45 Piece



**T016**  
Metric HSS Tap & Die Set - 45 Piece



Product Brochure For T6882

**T870**  
Screw Extractor Set - 10 piece



**T100**  
Metric Thread Repair Kit - 130 Piece



**D108**  
Metric Carbide Tipped Hole Saw Set



**D102**  
Metric HSS Hole Saw Set



**F160**  
Slapping File - Second Cut



**F150**  
Flexible Body File Holder



**F155**  
Flexible Body File



**F156**  
Flexible Body File



**P112**  
Hole Punch Set



**S203**  
180° Straight Edge/Seaming Plier



**S205**  
90° Edge/Seaming Plier



**S200**  
Joggler & Punch Plier



Product Brochure For T6882

**N001**  
Nut & Blind Riveter Set - 130  
Piece



**P350**  
Letter Punches



**P351**  
Number Punches



**P354**  
Letter Punches



**P355**  
Number Punches



**W103**  
Engineers Chalk Marker- 50  
Splits



**K72024**  
Metric Hex Cap Screw  
Assortment



**K74358**  
Metric Machine Screw  
Assortment



**K74444**  
Metric Set Screw Assortment



**K72062**  
Stainless Steel Nuts & Bolts  
Assortment



**K72450**  
Metric Nylon Lock Nut  
Assortment



**K72116**  
Metric Flat & Spring Washer  
Assortment



Product Brochure For T6882

**K72090**  
Sealing Washer Assortment



**K72146**  
Hose Clamp Assortment



**K72310**  
Metric Key Steel Assortment



**K72312**  
Imperial (SAE) Key Steel Assortment



**K72316**  
Metric Woodruff Key Assortment



**K72204**  
Metric Roll Pin Assortment



**K72712**  
Spring & Hitch Pin Assortment



**K74122**  
Lynch Pin Assortment



**K72168**  
Metric Nitrile O-Ring Assortment



**K72169**  
Imperial (SAE) Nitrile O-Ring Assortment



**K74146**  
Imperial (SAE) O-Ring Assortment



**K74150**  
Metric O-Ring Assortment



Product Brochure For T6882

**K74378**  
Metric External Snap Ring Assortment



**K74384**  
Metric Internal Snap Ring Assortment



**C1020**  
1/4" - 20 UNC Thread Hardware Kit



**C1021**  
5/16" - 18 UNC Thread Hardware Kit



**D063**  
Sheet Metal Deburring Tool



**D060**  
Deburring Tool - Telescopic Shaft



**D065**  
Universal Deburring Tool Set - 23 Piece



**D068**  
Pipe/Tube Deburring Tool - Internal / External



**B900**  
Carbide Burr Double Cut Set - Short Series



**B905**  
Carbide Burr Double Cut Set - Long Series



**L300**  
Magnetic Swarf Remover



**W112**  
Micro Welding Steel Clamp Set



Product Brochure For T6882

W113

Butt Welding Aluminium & Steel  
Clamp Set



S077

Drilling, Tapping & Cutting Tool  
Lubricant Spray - 400g



O043

Rust & Corrosion Preventive



O042

General Purpose Lubricant &  
Corrosion Inhibitor



P020

Hydraulic Chassis Punch Set



P030

Bush Driver Set - 17 piece



P031

Bearing Race & Seal Driver Set  
- 10 piece



P005

Ratcheting Gear Puller Set



P013

Puller Set with Slide Hammer



P011

Hydraulic Gear Puller Kit



H880

Dead Blow, Nylon Face  
Hammer



H870

Soft Face Hammer



Product Brochure For T6882

**H875**  
Soft Face Hammer - 5 piece



**H885**  
Auto Panel Restoration Kit - DIY



**H886**  
Auto Panel Restoration Kit - Professional



**H887**  
Auto Panel Restoration Kit - Master



**A043**  
Air Micro Die Grinder Kit



**A040**  
Air Die Grinder



**A042**  
Air Die Grinder 90° Angle Head



**A041**  
Air Die Grinder - Extended Shaft 5" (127mm)



**A025**  
Air Impact Wrench - Stubby



**A026**  
Air Impact Wrench



**A0560**  
Orbital Air Sander & Polishing Kit



**A065**  
Air Belt Sander



Product Brochure For T6882

---

A068  
Air Belt Sander



A038  
Air Drill



A085  
Air Shear



A082  
Air Nibbler



A088  
Air Punch & Flange



A046  
Air Pop Rivet Kit



A0450  
Air Nut Riveter Kit



A359  
Pneumatic Stool



A001  
Mobile Tool Storage Cabinet  
Seat

