

## Product Brochure For T6890

# Professional Series Mobile Work Station - TWS-622

10 Drawers and a cupboard

Wooden Bench Top 1150 x 740 x 30mm

**On Sale**

Ex GST

Inc GST

~~\$1,282.00~~

~~\$1,474.30~~

**\$1,000.00**

**\$1,150.00**



ORDER CODE:	T6890
MODEL:	TWS-622
Type:	Mobile Work Station
Series:	Professional Series
Drawers (No.):	10
Overall Dimensions (W x D x H) (mm):	1230 x 740 x 886
Nett Weight (kg):	173



## Description

Get ready for a toolbox revolution with the all-new HAFCO Professional Series – the ultimate gear for your workshop. Forget the flashy colours; it's all about the bold and professional vibes that Nardo Grey and gloss Black bring to the table. Now, your tools don't just work hard; they look dam good doing it.

The Mobile Work Station is the ultimate solution for anyone with limited space, such as small workshop or home garage. Or potentially you the perfect accompaniment for those that need their entire array of tools and a bench to go from job to job within one workshop.

Stacked with clever storage solutions, including a hard wooden bench top, ten drawers, a cabinet with adjustable shelving, adjustable hanging hooks and side storage holders. Of course, like all serious tool cabinet solutions it features soft push-to-close drawers using ball-bearing slides to ensure smooth operation, safety lock latches & foam liners for each drawer, a large handle and oversize castor wheels will make pushing this mobile work station easy.

Upgrade your workshop game today with the HAFCO Professional Series – where toughness meets style in smart shade of Nardo Grey.

TWS-622 DIMENSIONS - (WIDTH x DEPTH x HEIGHT)  
Overall size with handle & casters: 1230 x 740 x 886mm  
Overall size without Handle & casters: 1150 x 740 x 730mm  
Package size: 1190 x 770 x 1036mm  
6 drawers: 570 x 410 x 83mm (30kg Per Drawer)  
2 drawers: 570 x 410 x 112mm (30kg Per Drawer)  
2 drawers: 570 x 410 x 228mm (50kg Per Drawer)

## Features

- TWS-622 - Professional Series Mobile Work Station
- Gloss Nardo Gray finish
- Hard wearing wooden bench top 1150 x 740 x 30mm (WxDxH)
- Maximum storage with adjustable shelving and racks.
- Ball bearing slides, drawer latches & anti-slip foam liners on all drawers
- Dual slides on larger drawers for extra weight
- Large handle
- Key lockable
- Brakes on two wheels
- 400kg Total Load Capacity

Product Brochure For T6890

**Specific Features**



Front View Drawers Open



Rear View



Rear View Drawers Open



Top View



Front View



Protective Drawer Liners



Ball Bearing Slide Drawers



Drawer Latches on each Drawer



Key Lockable



Heavy Duty Push Handle



Wooden Bench Top



Slots for Hanging Hooks



Rear Storage Holders and Slots for Hanging Hooks



Key Lockable Cabinet with 2 Adjustable Shelves



2 x Swivel Brake Wheels



2 x Fixed Wheels

Product Brochure For T6890

**Recommended Accessories**

**W07806**

800 x 1200mm M16 Pro Series  
Welding Table Top with Pull-out  
Tray



**W07806K**

M16 Pro Series Mobile Welding  
Station



**T6886**

Professional Series Top Hutch



**T703**

Magnetic Spray Can &  
Screwdriver Holder



**H820**

Metric Hex Key Set with T-Bar  
Handle



**H821**

Imperial Hex Key Set with T-Bar  
Handle



**H822**

Torx® Key Set with T-Bar  
Handle



**D1272**

Metric 135° Precision HSS Drill  
Set - 25 Piece



Product Brochure For T6890

**D1282**  
Imperial 135° Precision HSS Drill Set - 29 Piece



**D1285**  
Metric 135° Precision HSS Drill Set - 51 Piece



**D1071**  
HSS Sheet Metal Step Drill Set - 3 Piece



**D1051**  
HSS Countersink Set (90° Cross Hole Type) - 4 Piece



**D1061**  
HSS Countersink Set (90° 3 Flute Type) - 6 Piece



**D508**  
HSS Industrial Centre Drill Set - 5Pcs



**D070**  
Drill Sharpener



**H880**  
Dead Blow, Nylon Face Hammer



**H870**  
Soft Face Hammer



**H875**  
Soft Face Hammer - 5 piece



**H885**  
Auto Panel Restoration Kit - DIY



**H886**  
Auto Panel Restoration Kit - Professional

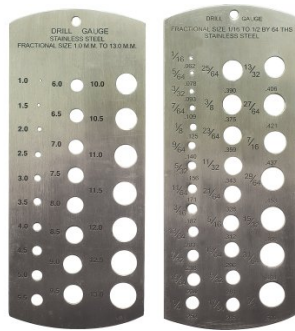


Product Brochure For T6890

**H887**  
Auto Panel Restoration Kit - Master



**M988**  
Metric & Imperial Drill Gauge



**Q616**  
Feeler Gauge Set



**T012**  
Metric Alloy Steel Tap & Die Set - 32 Piece



**T013**  
Metric HSS Tap & Die Set - 32 Piece



**T014**  
Metric Alloy Steel Tap & Die Set - 45 Piece



**T015**  
Imperial Alloy Steel Tap & Die Set - 45 Piece



**T016**  
Metric HSS Tap & Die Set - 45 Piece



**T870**  
Screw Extractor Set - 10 piece



**T100**  
Metric Thread Repair Kit - 130 Piece



**D108**  
Metric Carbide Tipped Hole Saw Set



**D102**  
Metric HSS Hole Saw Set



Product Brochure For T6890

---

**F100**  
Engineers Files, 5 Piece Set -  
Second Cut



**F120**  
Engineers File, Flat - Coarse  
Cut



**F121**  
Engineers File, Flat - Second  
Cut



**F122**  
Engineers File, Flat - Smooth  
Cut



**F124**  
Engineers File, Half Round -  
Coarse Cut



**F125**  
Engineers File, Half Round -  
Second Cut



**F126**  
Engineers File, Half Round -  
Smooth Cut



**F127**  
Engineers File, Round - Coarse  
Cut



**F128**  
Engineers File, Round - Second  
Cut



**F129**  
Engineers File, Round - Smooth  
Cut



**F160**  
Slapping File - Second Cut



**F150**  
Flexible Body File Holder



Product Brochure For T6890

**F155**  
Flexible Body File



**F156**  
Flexible Body File



**P112**  
Hole Punch Set



**S203**  
180° Straight Edge/Seaming Plier



**S205**  
90° Edge/Seaming Plier



**S200**  
Joggler & Punch Plier



**P368**  
Automatic Centre Punch



**P367**  
Centre Punch Set - 3 Piece



**P365**  
Pin Punch Set - 6 Piece



**P363**  
Cold Chisel Set - 3 Piece



**P364**  
Punch & Cold Chisel Set - 14 Piece



**N001**  
Nut & Blind Riveter Set - 130 Piece



Product Brochure For T6890

**P350**  
Letter Punches



**P351**  
Number Punches



**P354**  
Letter Punches



**P355**  
Number Punches



**W103**  
Engineers Chalk Marker- 50  
Splits



**D063**  
Sheet Metal Deburring Tool



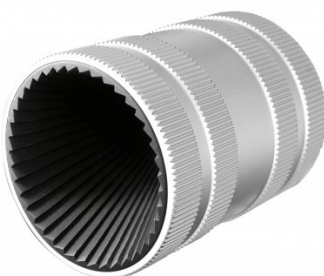
**D060**  
Deburring Tool - Telescopic  
Shaft



**D065**  
Universal Deburring Tool Set -  
23 Piece



**D068**  
Pipe/Tube Deburring Tool -  
Internal / External



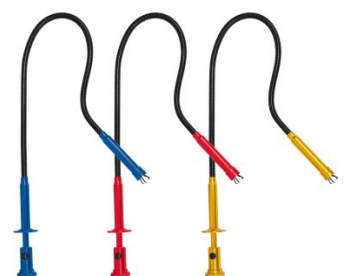
**B900**  
Carbide Burr Double Cut Set -  
Short Series



**B905**  
Carbide Burr Double Cut Set -  
Long Series



**M0010**  
Pick Up Tool with Magnetic  
Head & 1 x LED Light



Product Brochure For T6890

**M0009**  
Magnetic Pick Up Tool & Inspection Mirror Set



**L300**  
Magnetic Swarf Remover



**P020**  
Hydraulic Chassis Punch Set



**W112**  
Micro Welding Steel Clamp Set



**W113**  
Butt Welding Aluminium & Steel Clamp Set



**S077**  
Drilling, Tapping & Cutting Tool Lubricant Spray - 400g



**O043**  
Rust & Corrosion Preventive



**O042**  
General Purpose Lubricant & Corrosion Inhibitor



**O044**  
Rust & Corrosion Preventive



**P030**  
Bush Driver Set - 17 piece



**P031**  
Bearing Race & Seal Driver Set - 10 piece



**P005**  
Ratcheting Gear Puller Set



Product Brochure For T6890

---

P013  
Puller Set with Slide Hammer



P011  
Hydraulic Gear Puller Kit



A037  
Air Tool Oil

