

Product Brochure For T749

## Plastic Service Cart - PSC-2W

2 Trays  
1170 x 652 x 840mm



**On Sale**

Ex GST	Inc GST
<del>\$270.00</del>	<del>\$310.50</del>
<b>\$200.00</b>	<b>\$230.00</b>

ORDER CODE:	T749
MODEL:	PSC-2W
Number of Drawers:	2 Trays
Nett Weight (kg):	25



### Description

The PSC-2W movable service cart is made from heavy duty plastic and offers wider shelf space than the PSC-3T cart, it consists of 2 extra large storage trays, storage tray handle to store spanners/tools etc. with a 250kg total load rating, this is certainly ideal for the workshop or home garage.

### Features

- Moulded storage trays ideal for spanners and tools
- External size - 1170 x 652 x 840mm (LxWxH)
- 2 trays (945 x 652 x 105mm)
- Ø127mm wheels (2 swivel & 2 fixed wheels)
- 250kg total load rating, 125kg per tray
- Includes storage tray handle that attaches to either side of cart

Product Brochure For T749

**Specific Features**



Top View



Front View



Push Handle with Storage



Side View



2 x Swivel Wheels



2 x Fixed Wheels

**Recommended Accessories**

**H820**  
Metric Hex Key Set with T-Bar Handle



**H821**  
Imperial Hex Key Set with T-Bar Handle



**H822**  
Torx® Key Set with T-Bar Handle



**D1272**  
Metric 135° Precision HSS Drill Set - 25 Piece



Product Brochure For T749

**D1282**  
Imperial 135° Precision HSS Drill Set - 29 Piece



**D1285**  
Metric 135° Precision HSS Drill Set - 51 Piece



**D1071**  
HSS Sheet Metal Step Drill Set - 3 Piece



**D1051**  
HSS Countersink Set (90° Cross Hole Type) - 4 Piece



**D1061**  
HSS Countersink Set (90° 3 Flute Type) - 6 Piece



**D508**  
HSS Industrial Centre Drill Set - 5Pcs



**D070**  
Drill Sharpener



**H880**  
Dead Blow, Nylon Face Hammer



**H870**  
Soft Face Hammer



**H875**  
Soft Face Hammer - 5 piece



**H885**  
Auto Panel Restoration Kit - DIY



**H886**  
Auto Panel Restoration Kit - Professional

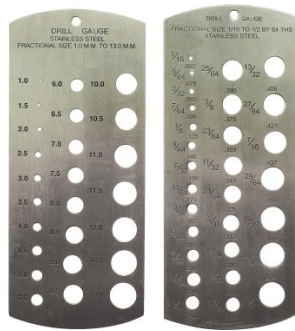


Product Brochure For T749

**H887**  
Auto Panel Restoration Kit - Master



**M988**  
Metric & Imperial Drill Gauge



**Q616**  
Feeler Gauge Set



**T012**  
Metric Alloy Steel Tap & Die Set - 32 Piece



**T013**  
Metric HSS Tap & Die Set - 32 Piece



**T014**  
Metric Alloy Steel Tap & Die Set - 45 Piece



**T015**  
Imperial Alloy Steel Tap & Die Set - 45 Piece



**T016**  
Metric HSS Tap & Die Set - 45 Piece



**T870**  
Screw Extractor Set - 10 piece



**T100**  
Metric Thread Repair Kit - 130 Piece



**D108**  
Metric Carbide Tipped Hole Saw Set



**D102**  
Metric HSS Hole Saw Set



Product Brochure For T749

**F100**  
Engineers Files, 5 Piece Set -  
Second Cut



**F120**  
Engineers File, Flat - Coarse  
Cut



**F121**  
Engineers File, Flat - Second  
Cut



**F122**  
Engineers File, Flat - Smooth  
Cut



**F124**  
Engineers File, Half Round -  
Coarse Cut



**F125**  
Engineers File, Half Round -  
Second Cut



**F126**  
Engineers File, Half Round -  
Smooth Cut



**F127**  
Engineers File, Round - Coarse  
Cut



**F128**  
Engineers File, Round - Second  
Cut



**F129**  
Engineers File, Round - Smooth  
Cut



**F160**  
Slapping File - Second Cut



**F150**  
Flexible Body File Holder



Product Brochure For T749

**F155**  
Flexible Body File



**F156**  
Flexible Body File



**P112**  
Hole Punch Set



**S203**  
180° Straight Edge/Seaming Plier



**S205**  
90° Edge/Seaming Plier



**S200**  
Joggler & Punch Plier



**P368**  
Automatic Centre Punch



**P367**  
Centre Punch Set - 3 Piece



**P365**  
Pin Punch Set - 6 Piece



**P363**  
Cold Chisel Set - 3 Piece



**P364**  
Punch & Cold Chisel Set - 14 Piece



**N001**  
Nut & Blind Riveter Set - 130 Piece



Product Brochure For T749

**P350**  
Letter Punches



**P351**  
Number Punches



**P354**  
Letter Punches



**P355**  
Number Punches



**W103**  
Engineers Chalk Marker- 50  
Splits



**D063**  
Sheet Metal Deburring Tool



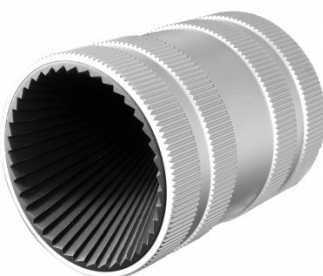
**D060**  
Deburring Tool - Telescopic  
Shaft



**D065**  
Universal Deburring Tool Set -  
23 Piece



**D068**  
Pipe/Tube Deburring Tool -  
Internal / External



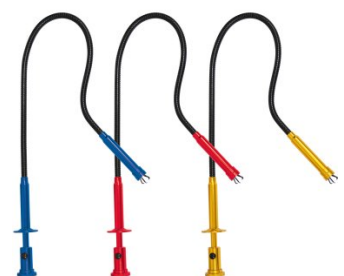
**B900**  
Carbide Burr Double Cut Set -  
Short Series



**B905**  
Carbide Burr Double Cut Set -  
Long Series



**M0010**  
Pick Up Tool with Magnetic  
Head & 1 x LED Light



Product Brochure For T749

**M0009**  
Magnetic Pick Up Tool & Inspection Mirror Set



**L300**  
Magnetic Swarf Remover



**P020**  
Hydraulic Chassis Punch Set



**W112**  
Micro Welding Steel Clamp Set



**W113**  
Butt Welding Aluminium & Steel Clamp Set



**S077**  
Drilling, Tapping & Cutting Tool Lubricant Spray - 400g



**O043**  
Rust & Corrosion Preventive



**O042**  
General Purpose Lubricant & Corrosion Inhibitor



**O044**  
Rust & Corrosion Preventive



**P030**  
Bush Driver Set - 17 piece



**P031**  
Bearing Race & Seal Driver Set - 10 piece



**P005**  
Ratcheting Gear Puller Set



Product Brochure For T749

---

P013  
Puller Set with Slide Hammer



P011  
Hydraulic Gear Puller Kit



A037  
Air Tool Oil

